

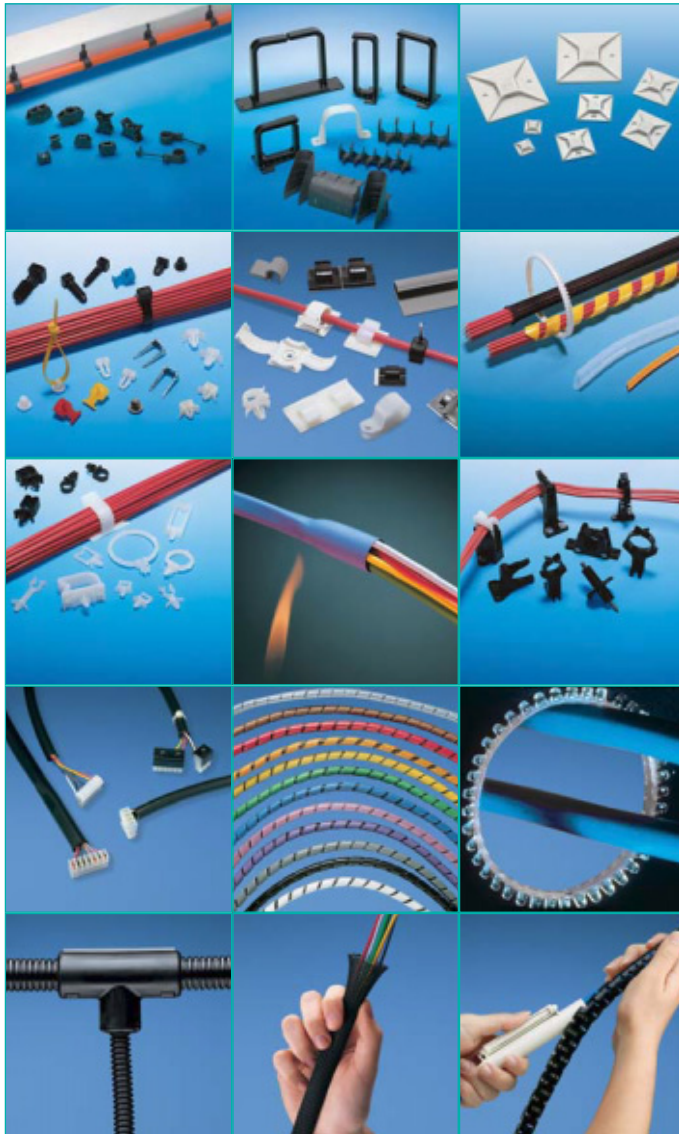


## CABLE TIES AND WIRING ACCESSORIES

Ihr autorisierter Distributor für Deutschland:

**AXXATRONIC GmbH, Alemannenstrasse 10, 71296 Heimsheim**  
Telefon: (0 70 33) 46 66 1 - 0, Fax: (0 70 33) 46 66 1 - 23, [www.axxatronic.de](http://www.axxatronic.de), [info@axxatronic.de](mailto:info@axxatronic.de)

## Wiring Accessories and Abrasion Protection



- Wire Management
- Communication Cable Management
- Adhesive Backed Mounts
- Push Mounts
- Cord Clips
- Loom Tubing Mounting
- Snap-In Clips
- Heat Shrink
- Harness Board Accessories
- PVC Non-Shrink Tubing
- Spiral Wrap
- Grommet Edging
- Corrugated Loom Tubing & Accessories
- Braided Sleeving
- Split Harness Wrap

### Smart Ways to Lower your Installed Cost

*PANDUIT* Wiring Accessories offer you a broad range of products designed to speed installation and lower your installed costs — whatever your requirements. Plus, *PANDUIT* provides experienced technical support to assure you get not only the best products for your application, but maximum benefit from its use.





Wiring Accessories are an integral part of *PANDUIT* comprehensive selection of wire management products. These accessories help provide the lowest installed solution to routing, mounting, protecting wire, cable and optical fibre. These products are manufactured in an environment committed to design innovation, high quality and knowledgeable service to our customers. The key benefits of this commitment are:

- The highest quality manufacturing environment, including statistical process control to meet applicable international and domestic standards
- *PANDUIT* teams up with a global network of Distributors to provide you with Just In Time shipping to eliminate your need for large inventories
- Fully staffed engineering and tool and die departments to assist in designing solutions to specific industry applications
- Continuous research on materials, adhesives and new technologies to provide you with the latest product innovations



## Selection of Styles



### Cable Tie Accessories

These products are used with *PANDUIT* Cable Ties to speed and simplify the mounting of wires, cables and tubing. Installation methods include adhesive-backed, user applied adhesive, screws, rivets or through-panel mount designs.



### Wiring Accessories

These products, including fixed and adjustable diameter accessories, are used without cable ties. Mounting methods include adhesive-backed, user applied adhesive, screws, rivets or through-panel designs.



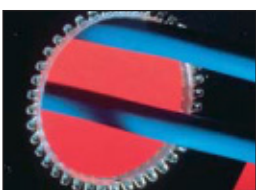
### Harness Board Accessories

*PANDUIT* unique selection of harness board accessories speeds the routing and forming of wire in harness fabrication. They hold wires at a uniform height above the board and are ideal for use with *PANDUIT* manual and automatic cable tie tooling.



### Abrasion Protection Products

*PANDUIT* offers a wide variety of abrasion protection products to protect wires, cables, hoses and tubing from abrasion. Heat shrink tubing, non-shrink PVC tubing, spiral wrap, grommet edging, corrugated loom tubing and braided expandable sleeving are available in a variety of sizes and materials to meet a broad range of indoor and outdoor applications.



### Part Number System Example

Part Description	Package Quantity	Colour/Material
For Part Description and Mounting Method, refer to specific product tables in catalogue.	X = 10 Q = 25 L = 50 C = 100 T = 200 D = 500 M = 1000 R = Reel	Blank = Natural 0 = Weather Resistant Black 8 = Grey 15 = Ivory 20 = Pigmented Black 30 = Heat Stabilised Nylon 6.6 (Black) 69 = Flame Retardant Nylon 6.6 (Ivory) 76 = TEFZEL <sup>®</sup> (Blue) 100 = Polypropylene Weather Resistant (Black) 109 = Polypropylene (Green) 120 = Weather Resistant Nylon 12 (Black) 130 = Acetal (Black) 630 = Heat Stabilised Nylon 6 (Black) 639 = Heat Stabilised Nylon 6 (Natural)

### Physical Properties and Colours of Wiring Accessory Materials

Design Criteria	General Purpose Nylon 6.6		Weather Resistant Nylon 6.6	Impact Modified Weather Resistant Nylon 6.6	Heat Stabilised Nylon 6.6	Flame Retardant Nylon 6.6		Glass Filled Flame Retardant Nylon 6.6
Colour	Natural	Black	Black	Black	Black	Black	Natural	Black
Part Number Suffix	None	20	0	0	30	60	69	None
UL Flammability —UL94	V-2	V-2	V-2	HB	V-2	V-0	V-0	V-0
Gamma Radiation Resistance	1x10 <sup>5</sup> Rads	1x10 <sup>5</sup> Rads	1x10 <sup>5</sup> Rads	N/A	1x10 <sup>5</sup> Rads	1x10 <sup>5</sup> Rads	1x10 <sup>5</sup> Rads	N/A
Water Absorption	1.2% (24 hrs)	1.2% (24 hrs)	1.2% (24 hrs)	1.2% (24 hrs)	1.2% (24 hrs)	1.1% (24 hrs)	1.1% (24 hrs)	0.7% (24 hrs)
UV Resistance	Poor	Fair	Good	Good	Good	Poor	Poor	Poor
Maximum Continuous Use Temperature	85°C	85°C	85°C	85°C	125°C	110°C	110°C	110°C
Minimum Continuous Use Temperature	-40°C	-40°C	-40°C	-40°C	-40°C	-40°C	-40°C	-40°C

### Physical Properties and Colours of Wiring Accessory Materials

Design Criteria	Heat Stabilised Nylon 6		TEFZEL <sup>®</sup>	General Purpose Polypropylene	Weather Resistant Polypropylene	General Purpose ABS		Weather Resistant ABS	Flame Retardant Polycarbonate	Acetal	PVC
Colour	Black	Natural	Blue	White	Black	White	Black	Black	Black	Black	Grey, White
Part Number Suffix	630	639	76	None	100	None	20	0	None	None	8,10
UL Flammability —UL 94	HB	HB	V-0	HB	HB	HB	HB	HB	V-0	HB	V-0
Gamma Radiation Resistance	N/A	N/A	2x10 Rads	1x10 Rads	1x10 Rads	N/A	N/A	N/A	N/A	N/A	N/A
Water Absorption (24 Hours)	1.5% (24 hrs)	1.5% (24 hrs)	<0.3% (24 hrs)	0.1% (24 hrs)	0.1% (24 hrs)	0.3% (24 hrs)	0.3% (24 hrs)	0.3% (24 hrs)	.15% (24 hrs)	.43% (24 hrs)	0.3% (24 hrs)
UV Resistance	Fair	Poor	Excellent	Poor	Good	Poor	Fair	Good	Good	Fair	Poor
Maximum Continuous Use Temperature	121°C	121°C	150°C	105°C	105°C	65°C	65°C	65°C	125°C	90°C	50°C
Minimum Continuous Use Temperature	-40°C	-40°C	-46°C	-40°C	-40°C	-40°C	-40°C	-40°C	-40°C	-40°C	-40°C

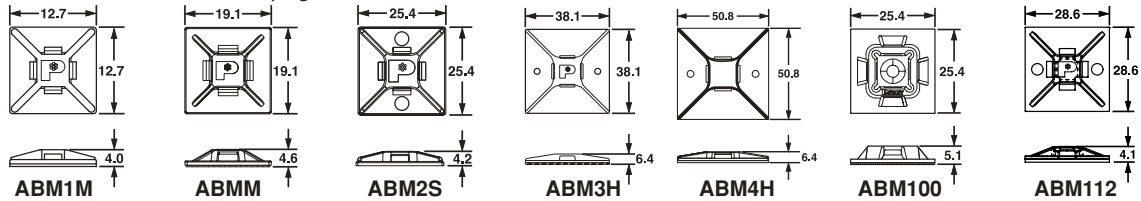
Based on assumption of minimum loading, chemical attack and impact free conditions.

\*HALAR is a registered trademark of Solvay Solexis, Inc.

®TEFZEL is a registered trademark of E.I. DuPont de Nemours Co.

## 4-Way Adhesive Backed Mounts

Lower your installed costs with fast, easy-to-install *PANDUIT* adhesive-backed cable tie mounts. Four-way tie entry for easy orientation of wires or cables. *PANDUIT* mounts are produced 2-up, 4-up, and with tear tabs for fast and easy liner removal to speed installation. For additional holding strength use M3 screws in the mounting hole(s) where applicable. For specific information on adhesive properties and technical data on mount selection, see pages 133-134.



Part Number	Used With Cable Ties**	Dimensions mm	Material	Colour	Where Used	Adhesive Type	Max. Static Load g	Std. Pkg. Qty.	Std. Ctn. Qty.
ABM1M-A-C	M	See Drawing	Nylon 6.6	White	Indoors	Rubber	59	100	500
ABM1M-AT-C	M		Nylon 6.6	White	Indoors/High Temp	Acrylic	59	100	500
ABMM-A-C	M, I	See Drawing	ABS	White	Indoors	Rubber	136	100	500
ABMM-AT-C			ABS	White	Indoors/High Temp	Acrylic	136	100	500
ABMM-AT-C0			Weather Resistant ABS	Black	Outdoors	Acrylic	136	100	500
ABM2S-A-C	See Drawing	See Drawing	ABS	White	Indoors	Rubber	227	100	500
ABM2S-A-C14			ABS	Grey	Indoors	Rubber	227	100	500
ABM2S-A-C15			ABS	Ivory	Indoors	Rubber	227	100	500
ABM2S-AT-C			ABS	White	Indoors/High Temp	Acrylic	227	100	500
ABM2S-AT-C0			Weather Resistant ABS	Black	Outdoors	Acrylic	227	100	500
ABM100-A-C	M, I, S	See Drawing	Nylon 6.6	White	Indoors	Rubber	227	100	1000
ABM100-A-C15			Nylon 6.6	Ivory	Indoors	Rubber	227	100	1000
ABM100-AT-C			Nylon 6.6	White	Indoors/High Temp	Acrylic	227	100	1000
ABM100-AT-C0			Weather Resistant Nylon 6.6	Black	Outdoors/High Temp	Acrylic	227	100	1000
ABM112-A-C	See Drawing	See Drawing	Nylon 6.6	White	Indoors	Rubber	286	100	500
ABM112-AT-C			Nylon 6.6	White	Indoors/High Temp	Acrylic	286	100	1000
ABM112-AT-C0			Weather Resistant Nylon 6.6	Black	Outdoors	Acrylic	286	100	1000
ABM3H-A-L	M, I, S, LH, H, & HLM	See Drawing	Nylon 6.6	White	Indoors	Rubber	513	50	500
ABM3H-AT-L	M, I, S, LH, H, & HLM		Nylon 6.6	White	Indoors/High Temp	Acrylic	513	50	500
ABM4H-A-L	M, I, S, LH, H, & HLM	See Drawing	Nylon 6.6	White	Indoors	Rubber	907	50	500
ABM4H-AT-L	M, I, S, LH, H, & HLM		Nylon 6.6	White	Indoors/High Temp	Acrylic	907	50	500

### 4-Way Mounts Without Adhesive

ABMM-D	M, I	See Drawing	ABS	Natural	Indoors	User supplied adhesive	—	500	5000
ABM2S-S6-D	M, I, S		ABS	Natural	Indoors	User supplied adhesive and/or (2) M3 screws	—	500	5000
ABM100-S6-C			Nylon 6.6	Natural	Indoors	—	100	1000	
ABM100-S6-C69			Flame Retardant Nylon 6.6	Ivory	Indoors	User supplied adhesive and/or M3 screw	—	100	1000
ABM112-S6-C			Nylon 6.6	Natural	Indoors	User supplied adhesive and/or (2) M3 screws	—	100	1000
ABM112-S6-C69			Flame Retardant Nylon 6.6	Ivory	Indoors		—	100	500
ABM3H-S6-T	M, I, S, LH, H, & HLM		Nylon 6.6	Natural	Indoors	—	200	2000	
ABM4H-S6-T		Nylon 6.6	Natural	Indoors	—	200	1000		

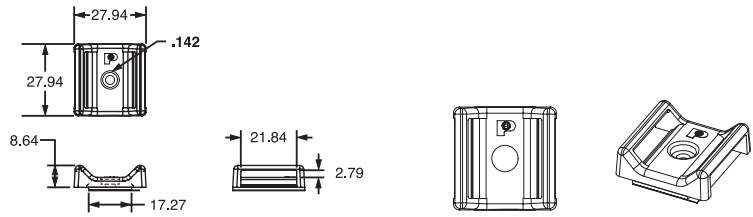
\*\*Cable Tie Cross Section Sizes: M = Miniature, I = Intermediate, S = Standard, LH = Light-Heavy, H = Extra-Heavy and HLM Series

**TAK-TY™ Hook & Loop Cable Tie Mounts**



Mounting base for use with 19.0mm TAK-TY™ Hook & Loop Cable Ties.

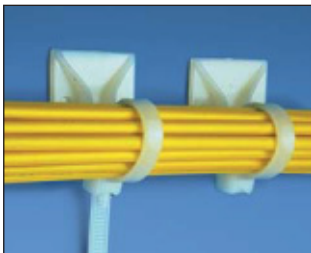
- For indoor use only



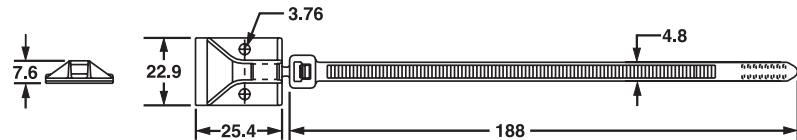
Part Number	Used with Cable Ties**	Mounting Method	Max. Static Load g	Material	Colour	Std. Pkg. Qty.	Std. Ctn. Qty.
ABMT-A-C	Hoop & Loop Cable Ties	Rubber Adhesive	174	Nylon 6.6	Natural	100	1000
ABMT-A-C20					Black	100	1000
ABMT-S6-C		M3 Screw	—		Natural	100	1000
ABMT-S6-C20					Black	100	1000
ABMT-S6-C60		Flame Retardant Nylon 6.6	—	Black	100	1000	
ABMT-S6-C69				Ivory	100	1000	

\*\*Used with HLC, HLT, HLS and HLM Hook & Loop Cable Ties found on Page 36.

**4-Way Adhesive Backed Mounts**

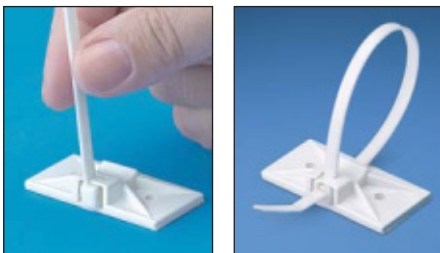


Adhesive mount and cable tie moulded as one piece help reduce inventory costs. Mount portion features ramp to guide tip into tie head and holes to install two (2) optional M3 screws for added mounting strength. Available with locking or releasable tie. Extended adhesive liner release tab on mount for fast liner removal.

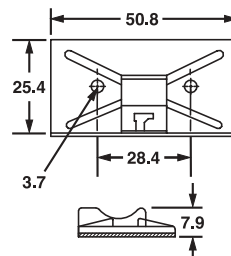


Part Number	Dimensions mm	Min. Loop Tensile Str. N	Recommended PANDUIT Installation Tool	Material	Colour	Adhesive Type	Static Load g	Std. Pkg. Qty.	Std. Ctn. Qty.
<b>Locking Cable Tie</b>									
PLA2S-A-Q	See Drawing	222	GTS, GS2B, PTS, PPTS, STS2, STH2	Nylon 6.6	Natural	Rubber	204	25	250
<b>Releasable Cable Tie</b>									
PRA2S-A-Q	See Drawing	222	Hand Installed Only	Nylon 6.6	Natural	Rubber	204	25	250

**Snap-In Cable Tie Mounts**



Integral retaining notch holds cable tie head in place below bundle; eliminates protruding tie head and facilitates one hand tie threading.



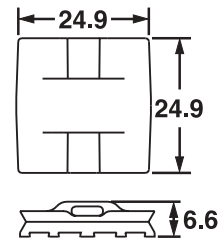
Part Number	Used With Cable Ties**	Dimensions mm	Material	Colour	Where Used	Mounting Method	Std. Pkg. Qty.	Std. Ctn. Qty.
<b>Adhesive Backed</b>								
SMS-A-C	S	See Drawing	ABS	White	Indoors	Rubber Adhesive	100	500
SMS-A-C14	S		ABS	Grey	Indoors		100	500
SMS-A-C15	S		ABS	Ivory	Indoors		100	500
<b>Screw Mount</b>								
SMS-S6-D	S	See Drawing	ABS	Natural	Indoors	2 M3 Screws	500	5000

\*\*Cable Tie Cross Section Sizes: S = Standard.

### Epoxy Applied Mounts



These mounts are designed for application with *PANDUIT* EMA Epoxy. Provides a fast, strong, economical method to secure wire or cable to steel, aluminium, glass, wood and most other surfaces. Especially well suited to construction and maintenance applications. Eliminates the need to drill holes.



Part Number	Used With Cable Ties**	Dimensions mm	Material	Colour	Where Used	Mounting Method	Max. Static Load g	Std. Pkg. Qty.	Std. Ctn. Qty.
EMS-A-C	M, I, S	See Drawing	Nylon 6.6	Natural	Indoors	EMA Epoxy	4540	100	1000
EMS-A-C0	M, I, S		Weather Resistant Nylon 6.6	Black	Outdoors	EMA Epoxy	4540	100	1000

\*\*Cable Tie Cross Section Sizes: M = Miniature, I = Intermediate and S = Standard.

### Epoxy Applied Swivel Mounts

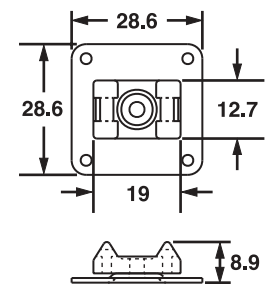


Mount swivels 360° to assure proper orientation with harness. Four inspection holes to check adhesive coverage.

Material:

**Base and Rivet:** Aluminium

**Mount:** Natural Nylon 6.6 — Indoors



Part Number	Used With Cable Ties**	Dimensions mm	Where Used	Mounting Method	Max. Static Load g	Std. Pkg. Qty.	Std. Ctn. Qty.
ASMS-A-X	M, I, S	See Drawing	Indoors	EMA Epoxy	4540	10	100

\*\*Cable Tie Cross Section Sizes: M = Miniature, I = Intermediate and S = Standard.

### Epoxy Adhesive and Mount Kits



EMSK3-1-X0 Epoxy Kit with mounts. Packed in sturdy foil pouch

EMA Epoxy supplied in convenient two-compartment mixer cup with a mixer stick for each cup. Each cup contains adhesive for three EMS or ASMS mounts.

Epoxy hardens in about five minutes. Supports about 2.5Kg. after first 15 minutes. After full 24 hour curing time, bonding strength will exceed 20.5Kg.. on clean, grease-free surface.

Note: Not recommended for polyethylene and polypropylene.



**EMA EPOXY**



EMSK-12-4-12-X0 Epoxy Kit with mounts and cable ties

Part Number	Used With Cable Ties**	Where Used	Epoxy Cups	Mixer Sticks	EMS Mounts	Cable Ties	Std. Pkg. Qty.	Std. Ctn. Qty.
<b>Epoxy Adhesive Only</b>								
EMA-X	—	Indoors/Outdoors	10	10	—	—	10	—
<b>Epoxy Mounting Kit with EMS Mounts</b>								
EMSK3-1-X0	M, I, S	Indoors/Outdoors	1	1	3	—	10	—
<b>Epoxy Mounting Kit with EMS Mounts and Cable Ties</b>								
EMSK3-1-3-0	M, I, S	Indoors/Outdoors	1	1	3	3 PLT2S-0	1	10
EMSK12-4-12-X0	M, I, S	Indoors/Outdoors	4	4	12	3 PLT2S-0	10	10

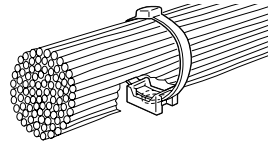
\*\*Cable Tie Cross Section Sizes: M = Miniature, I = Intermediate and S = Standard.



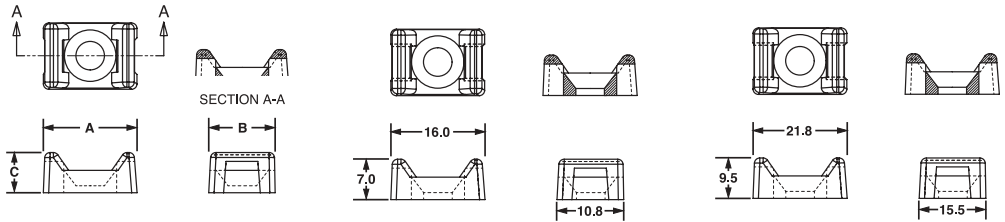
## Tie Mounts — Mechanically Applied



Unique cradle design provides maximum stability and rigidity to the wire bundle. Screw or rivet installed.



Except  
TM1S4-M69  
TM2S8-C100  
TM3S8-C69  
TM3S8-C100



TM1

TM2

TM3

Part Number	Used With Cable Ties**	Dimensions mm	Material	Colour	Where Used	Hole Diameter mm	Counterbore Diameter mm	Mounting Method	Std. Pkg. Qty.	Std. Ctn. Qty.
TM1S4-C	M	See Drawing	Nylon 6.6	Natural	Indoors	3.0	5.7	M2.5 Screw	100	500
TM1S6-C						3.7	7.0	M3 Screw	100	500
TM2S6-C	M, I, S	See Drawing				3.8	7.0	M3 Screw	100	500
TM2S8-C						4.5	8.4	M4 Screw	100	500
TM2R6-C						4.8	Countersunk	M3 Screw/ Rivet	100	500
TM3S8-C	M, I, S, LH	See Drawing				Nylon 6.6	Natural	Indoors	4.5	8.1
TM3S10-C			5.0	9.7	M5 Screw				100	500
TM3S25-C			6.6	12.7	M6 Screw				100	500
TM3R6-C			4.8	Countersunk	M3 Screw/ Rivet				100	500

\*\*Cable Tie Cross Section Sizes: M = Miniature, I = Intermediate, S = Standard, and LH = Light-Heavy.

**Additional Tie Mount Part Numbers Available in specified materials.  
All are available as standard PANDUIT parts**

Heat Stabilised Nylon	Flame Retardant Nylon	Weather Resistant Nylon	Weather Resistant Polypropylene	TEFZEL <sup>®</sup>
TM1S4-M30	TM1S4-M69	TM1S6-C0	TM2S8-C100	TM2S8-C76
TM1S6-M30	TM1S6-M69	TM2R6-M0	TM3S8-C100	TM3S8-C76
TM2R6-M30	TM2S6-M69	TM2S6-C0		TM3S10-C76
TM2S6-M30	TM2S8-M69	TM2S8-C0		
TM2S8-M30	TM3S8-C69	TM3R6-M0		
TM3S8-M30	TM3S10-M69	TM3S10-C0		
TM3S10-M30		TM1S4-C0		
TM3S25-M30		TM3S8-C0		

<sup>®</sup>TEFZEL is the Registered Trademark of E.I. DuPont de Nemours Co.

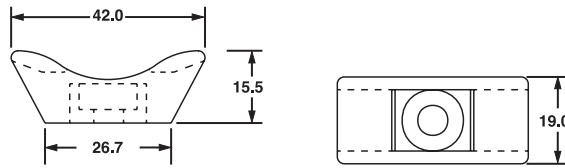
Hole Diameter — mm		
Part Number	Hole Dia.	Counterbore Dia.
TM1S4	3.0	5.8
TM1S6	3.8	7.1
TM2S6	3.8	7.1
TM2S8	4.6	8.1
TM2R6	4.8	Countersunk
TM3S8	4.6	8.1
TM3S10	5.1	9.9
TM3S25	6.6	12.9
TM3R6	4.8	Countersunk



**Extra-Heavy Tie Mounts**



Mounts designed especially for use with *PANDUIT* Extra-Heavy cross-section ties for mounting cable, large wire bundles or tubular shapes.



Part Number	Hole Diameter	Counterbore Diameter
TMEHS8	4.3	13.0
TMEHS10	5.1	13.0
TMEH25	6.6	13.0

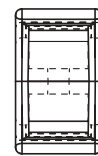
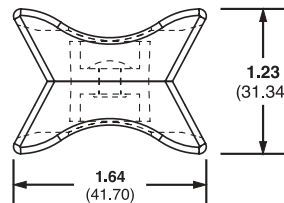
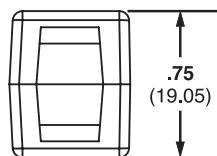
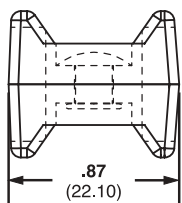
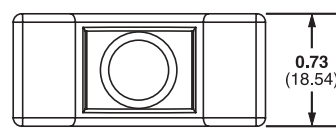
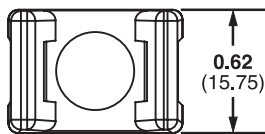
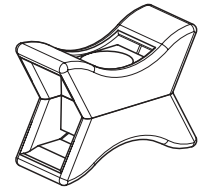
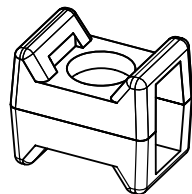


Part Number	Used With Cable Ties**	Dimensions mm	Material	Colour	Where Used	Mounting Method	Std. Pkg. Qty.	Std. Ctn. Qty.
TMEH-S8-Q0	M, I, S, LH, EH, HLM, HLT	See Drawing	Weather Resistant Nylon 6.6	Black	Outdoors	M4 Screw	25	250
TMEH-S10-Q0						M5 Screw	25	250
TMEH-S25-Q0						M6 Screw	25	250
TMEH-S10-C100			Weather Resistant Polypropylene	Green	Indoors	M5 Screw	100	500
TMEH-S10-C109			Polypropylene			M5 Screw	100	500

\*\*Cable Tie Cross Section Sizes: M = Miniature, I = Intermediate, S = Standard, LH = Light-Heavy, EH = Extra-Heavy and HLM & HLT Series Hook & Loop Cable Ties.

**Swivel Cable Tie Mounts**

The two TM style mounts are securely fastened together with a rivet that allows both mounts to swivel. The Swivel Mount can join bundles of cable, tubing or hoses that may need to move or are not parallel. This mount is also a great way to separate bundles to avoid abrasion.



TM3

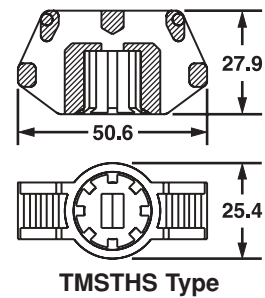
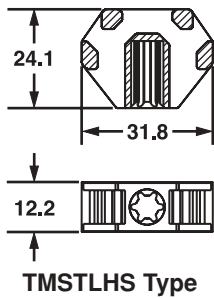
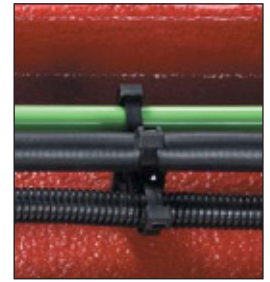
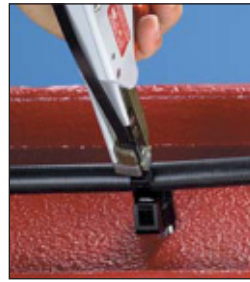
TMEH

Part Number	Used With Cable Ties	Dimensions mm	Material	Colour	Where Used	Std. Pkg. Qty.	Std. Ctn. Qty.
TM1-X2-C	M	See Drawing	Nylon 6.6	Natural	Indoors	100	1000
TM3-X2-C0	M, I, S, LH		Weather Resistant Nylon 6.6	Black	Indoors/Outdoors	100	1000
TMEH-X2-L0	M, I, S, LH, EH, HLM		Weather Resistant Nylon 6.6	Black	Indoors/Outdoors	50	500

\*\*Cable Tie Cross Section Sizes: M = Miniature, I = Intermediate, S = Standard, LH = Light-Heavy, EH = Extra-Heavy and HLM Series Hook & Loop Cable Ties.

**Stud Tie Mounts**

Easily applied to bolts or studs with a light hammer blow or turning of the mount. The mounts are designed for use with cable ties to mount wire bundles, air, water and hydraulic lines.



Part Number	Used With Cable Ties**	Dimensions mm	Material	Colour	Where Used	Bolt/Stud Size	Mounting Method	Std. Pkg. Qty.	Std. Ctn. Qty.		
TMSTLHS5-C30	M, I, S, LH	See Drawing	Heat Stabilised Nylon 6.6	Black	Indoors	M5	Stud Dia. (5 mm)	100	—		
TMSTLHS6-C0	M, I, S, LH		Weather Resistant Nylon 6.6		Outdoors	M6		100	5000		
TMSTLHS8-C0	M, I, S, LH		Weather Resistant Nylon 6.6			M8		100	5000		
TMSTHS10-C0	M, I, S, LH, H	See Drawing	Weather Resistant Nylon 6.6		Black	Outdoors		M10	Stud Dia. (5 mm)	100	—
TMSTHS13-C0			Weather Resistant Nylon 6.6					M13		100	—
TMSTHS16-C0			Weather Resistant Nylon 6.6					M16		100	—
TMSTHS19-C0			Weather Resistant Nylon 6.6					M19		100	—

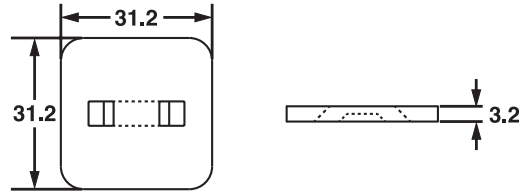
\*\*Cable Tie Cross Section Sizes: M = Miniature, I = Intermediate, S = Standard, LH = Light-Heavy and H = Heavy.

## Tie Mounts — Applied with User Supplied Adhesives

Apply cyanoacrylic or another type adhesive to mount surface. Any adhesive selected should be user-tested to assure suitability for the actual application. Mounts should be installed on a clean, dry and grease-free surface. Bond strength depends on adhesive used.

### Low Profile Mount - AM2

Low profile design keeps bundle close to mounting surface where overhead space is limited.

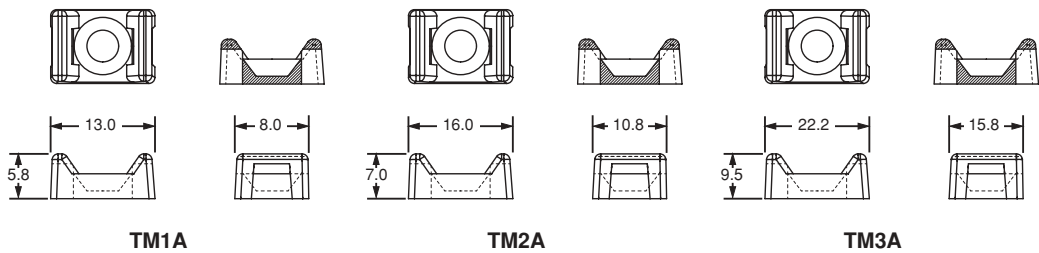
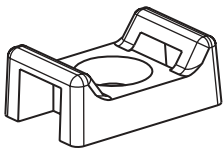


Part Number	Used With Cable Ties**	Dimensions mm	Material	Colour	Where Used	Mounting Method	Std. Pkg. Qty.	Std. Ctn. Qty.
AM2-C	M, I, S	See Drawing	Nylon 6.6	Natural	Indoors	User Supplied Adhesive	100	500

\*\*Cable Tie Cross Section Sizes: M = Miniature, I = Intermediate and S = Standard.

### TM1A, TM2A, TM3A

Solid flat bottom surface provides maximum adhesive area.



Part Number	Used With Cable Ties**	Dimensions mm	Material	Colour	Where Used	Mounting Method	Std. Pkg. Qty.	Std. Ctn. Qty.
TM1A-C	M	See Drawing	Nylon 6.6	Natural	Indoors	User Supplied Adhesive	100	1000
TM2A-C	M, I, S						100	500
TM3A-C	M, I, S, LH						100	500

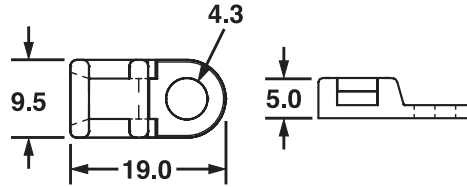
\*\*Cable Tie Cross Section Sizes: M = Miniature, I = Intermediate, S = Standard, and LH = Light-Heavy.



## Screw Applied Tie Anchor Mounts

Low profile and versatile, these screw-installed mounts can be ideal for applications where space is limited. Designed for four-way cable tie insertion, this mount can be mounted in-line or perpendicular to the wire bundle.

### TA1 Anchor

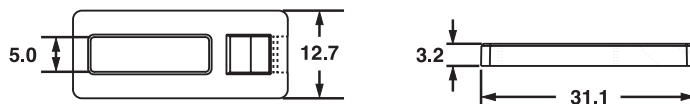
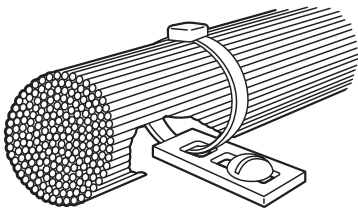


Part Number	Used With Cable Ties**	Dimensions mm	Material	Colour	Where Used	Mounting Method	Std. Pkg. Qty.	Std. Ctn. Qty.
TA1S8-C	M, I, S	See Drawing	Nylon 6.6	Natural	Indoors	M4 Screw	100	500
TA1S8-M0			Weather Resistant Nylon 6.6	Black	Outdoors	M4 Screw	1000	5000
TA1S8-M30			Heat Stabilised Nylon 6.6	Black	Indoors	M4 Screw	1000	5000
TA1S8-M69			Flame Retardant Nylon 6.6	Ivory	Indoors	M4 Screw	1000	5000
TA1S10-C			Nylon 6.6	Natural	Indoors	M5 Screw	100	500
TA1S10-M0			Weather Resistant Nylon 6.6	Black	Outdoors	M5 Screw	1000	5000

\*\*Cable Tie Cross Section Sizes: M = Miniature, I = Intermediate and S = Standard.

### TA2 Anchor

This mount is installed perpendicular to the wire bundle. Elongated slot permits installing the screw and adjusting mount position with the bundle attached.

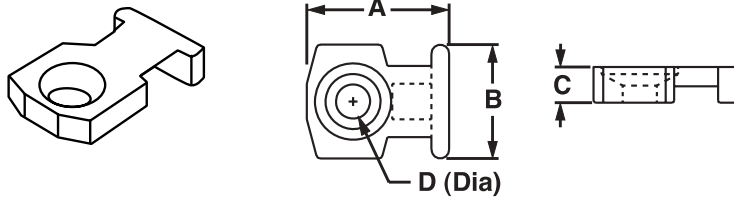
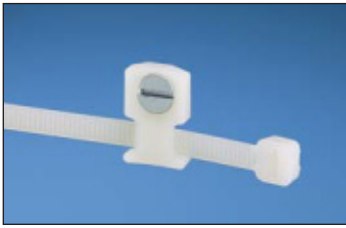


Part Number	Used With Cable Ties**	Dimensions mm	Material	Colour	Where Used	Mounting Method	Std. Pkg. Qty.	Std. Ctn. Qty.
TA2-C	M, I, S	See Drawing	Nylon 6.6	Natural	Indoors	M5 Screw	100	1000

\*\*Cable Tie Cross Section Sizes: M = Miniature, I = Intermediate and S = Standard.

### Screw Applied Low Profile Mounts

Designed to secure wire bundles where space is limited.



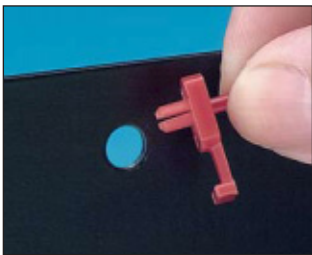
Part Number	Used With Cable Ties**	Length A	Width B	Height C	Diameter D	Material	Colour	Where Used	Mounting Method	Std. Pkg. Qty.	Std. Ctn. Qty.
		mm	mm	mm	mm						
LPMM-S2-C	M	10.2	8.1	2.5	2.4 <sup>1</sup>	Nylon 6.6	Natural	Indoors	M2 Screw	100	1000
LPMM-S5-C	M	10.2	8.1	2.5	3.5 <sup>2</sup>	Nylon 6.6	Natural	Indoors	M3 Screw	100	1000
LPMS-S8-C	M, I, S	19.1	12.7	3.0	4.6 <sup>2</sup>	Nylon 6.6	Natural	Indoors	M4 Screw	100	1000

<sup>1</sup>Combination Counter Bore & Counter Sunk Hole 2.2mm Dia. Rivet can also be used) <sup>2</sup>Counter Sunk Hole

\*\*Cable Tie Cross Section Sizes: M = Miniature, I = Intermediate and S = Standard.

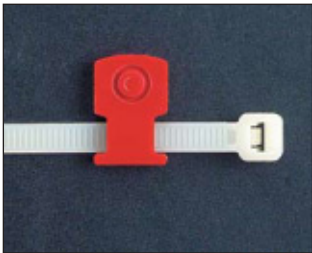
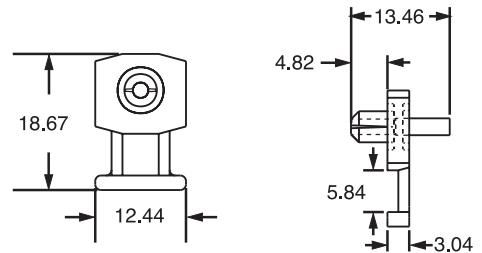
### Knock-In Low Profile Mounts

Secures wires to any pre-drilled panel. Can be installed in any panel thickness. Eliminates screws.



Easy to Install:

1. Push rivet in pre-drilled panel hole.
2. Use *PANDUIT* Rivet Installation Tool (TNR) or hammer to drive the pin flush to the base. This drives the rivet into the hole and secures the mount.
3. Attach wires to the mount with cable tie.

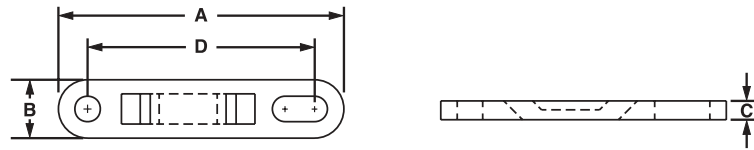


Part Number	Used With Cable Ties**	Dimensions mm	Hole Diameter	Material	Colour	Where Used	Mounting Method	Std. Pkg. Qty.	Std. Ctn. Qty.
			mm						
KIMS-H366-C2	M, I, S	See Drawing	3.7	Nylon 6.6	Red	Indoors	Integral Push Rivet	100	1000
KIMS-H430-C6			4.3		Blue				
KIMS-H500-C4			5.0		Yellow				

\*\*Cable Tie Cross Section Sizes: M = Miniature, I = Intermediate and S = Standard.

## Tie Plates

Screw applied. Each tie plate has a slotted mounting hole to accommodate various fastener spacings.

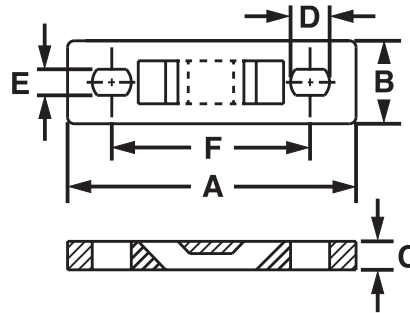
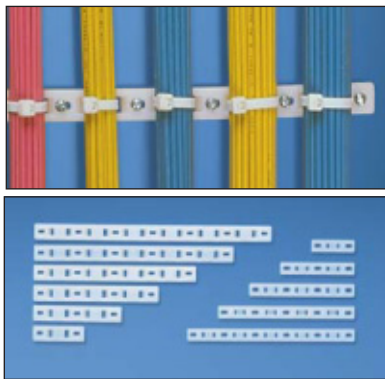


Part Number	Used With Cable Ties**	Length A	Width B	Height C	Diameter D	Slot Length E	Slot Width F	Hole Spacing G	Material	Colour	Where Used	Mounting Method	Std. Pkg. Qty.	Std. Ctn. Qty.
		mm	mm	mm	mm	mm	mm	mm						
TP2-C	M, I, S	50.3	12.7	3.2	5.1	10.2	5.1	40.6	Nylon 6.6	Natural	Indoors	M5 Screw	100	1000
TP4H-C	M, I, S, LH, H	78.2	15.7	5.2	6.9	7.9	6.9	63.5	Nylon 6.6	Natural	Indoors	M6 Screw	100	1000

\*\*Cable Tie Cross Section Sizes: M = Miniature, I = Intermediate, S = Standard, LH = Light-Heavy and H = Heavy.

## Multiple Tie Plates

Screw applied. Used to secure closely spaced wire bundles.



Part Number	Number of Bundles	Used With Cable Ties**	Length A	Width B	Height C	Slot Length D	Slot Width E	Hole Spacing F	Material	Where Used	Mil. Std. Part Number	Mounting Method	Std. Pkg. Qty.	Std. Ctn. Qty.
			mm	mm	mm	mm	mm	mm						
MTP1S-E6-C	1	M, I, S	44.5	12.7	3.2	5.58	3.73	31.8	Nylon 6.6	Indoors	MS3339-1	M3 Screw	100	1000
MTP1S-E10-C	1		44.5	12.7	3.2	7.74	5.21	31.8	Nylon 6.6	Indoors	—	M5 Screw	100	1000
MTP1H-E6-C	1	M, I, S, LH, H	53.1	16.0	5.2	5.58	3.73	38.1	Nylon 6.6	Indoors	MS3339-6	M3 Screw	100	1000
MTP1H-E10-C	1		53.1	16.0	5.2	7.74	5.21	38.1	Nylon 6.6	Indoors	—	M5 Screw	100	1000
MTP2S-E6-C	2	M, I, S	76.2	12.7	3.2	5.58	3.73	63.5	Nylon 6.6	Indoors	MS3339-2	M3 Screw	100	1000
MTP2S-E10-C	2		76.2	12.7	3.2	7.74	5.21	63.5	Nylon 6.6	Indoors	—	M5 Screw	100	1000
MTP2H-E6-C	2	M, I, S, LH, H	91.2	16.0	5.2	5.58	3.73	76.2	Nylon 6.6	Indoors	MS3339-7	M3 Screw	100	1000
MTP2H-E10-C	2		91.2	16.0	5.2	7.74	5.21	76.2	Nylon 6.6	Indoors	—	M5 Screw	100	1000
MTP3S-E6-C	3	M, I, S	108.0	12.7	3.2	5.58	3.73	95.3	Nylon 6.6	Indoors	MS3339-3	M3 Screw	100	1000
MTP3S-E10-C	3		108.0	12.7	3.2	7.74	5.21	95.3	Nylon 6.6	Indoors	—	M5 Screw	100	1000
MTP3H-E6-C	3	M, I, S, LH, H	129.3	16.0	5.2	5.58	3.73	114.3	Nylon 6.6	Indoors	MS3339-8	M3 Screw	100	1000
MTP3H-E10-C	3		129.3	16.0	5.2	7.74	5.21	114.3	Nylon 6.6	Indoors	—	M5 Screw	100	1000
MTP4S-E6-C	4	M, I, S	139.7	12.7	3.2	5.58	3.73	127.0	Nylon 6.6	Indoors	MS3339-4	M3 Screw	100	1000
MTP4S-E10-C	4		139.7	12.7	3.2	7.74	5.21	127.0	Nylon 6.6	Indoors	—	M5 Screw	100	1000
MTP4H-E6-C	4	M, I, S, LH, H	167.4	15.7	5.2	5.58	3.73	152.4	Nylon 6.6	Indoors	MS3339-9	M3 Screw	100	1000
MTP4H-E10-C	4		167.4	15.7	5.2	7.74	5.21	152.4	Nylon 6.6	Indoors	—	M5 Screw	100	1000
MTP5S-E6-C	5	M, I, S	171.5	12.7	3.2	5.58	3.73	158.8	Nylon 6.6	Indoors	MS3339-5	M3 Screw	100	1000
MTP5S-E10-C	5		171.5	12.7	3.2	7.74	5.21	158.8	Nylon 6.6	Indoors	—	M5 Screw	100	1000
MTP5H-E6-C	5	M, I, S, LH, H	205.5	16.0	5.2	5.58	3.73	190.5	Nylon 6.6	Indoors	MS3339-10	M3 Screw	100	1000
MTP5H-E10-C	5		205.5	16.0	5.2	7.74	5.21	190.5	Nylon 6.6	Indoors	—	M5 Screw	100	1000
MTP6H-E6-C	6	M, I, S, LH, H	243.6	16.0	5.2	5.58	3.73	228.6	Nylon 6.6	Indoors	MS3339-11	M3 Screw	100	1000
MTP6H-E10-C	6		243.6	16.0	5.2	7.74	5.21	228.6	Nylon 6.6	Indoors	—	M5 Screw	100	1000

\*\*Cable Tie Cross Section Sizes: M = Miniature, I = Intermediate, S = Standard, LH = Light-Heavy and H = Heavy.

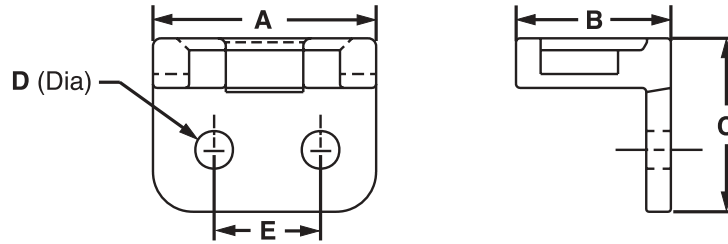
Part numbers also available in -39 Heat Stabilised material. For more information please contact customer service.

Order the number of mounts required in multiples of standard package quantities.



**Right Angle Mounts**

Secure wire bundles that run through bulkheads or cabinet holes, holding them away from sharp edges. Can also be used to mount wire bundles adjacent to any surface. Screw or rivet applied.

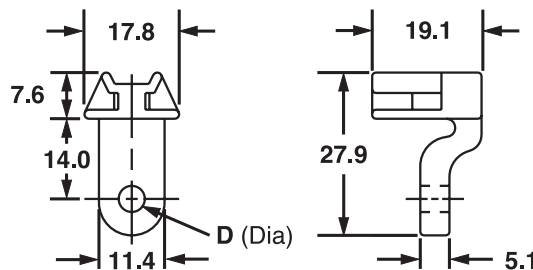
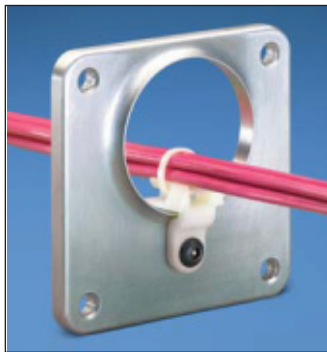


Part Number	Used With Cable Ties**	Length A mm	Width B mm	Height C mm	Diameter D mm	Hole Spacing E mm	Material	Colour	Where Used	Mil. Std. Part Number	Mounting Method	Std. Pkg. Qty.	Std. Ctn. Qty.
RAMS-S3-M	M, I, S	14.2	9.9	11.0	2.4	7.1	Nylon 6.6	Natural	Indoors	MS3341-2	M2.5 Screw or 2.4 Round Head Rivet	1000	5000
RAMH-S6-D	M, I, S, LH, H	25.4	19.1	25.4	3.2	12.7				MS3341-1	M3 Screw or 3.2 Round Head Rivet	500	5000
RAMH-S10-D				25.4	5.1	—				M5 Screw or 4.7 Round Head Rivet	500	5000	

\*\*Cable Tie Cross Section Sizes: M = Miniature, I = Intermediate, S = Standard, LH = Light-Heavy and H = Heavy.

**Lightening Hole Mounts**

Used to secure wire bundles which run through bulkhead lightening holes (22.1mm diameter or larger) and keep bundles away from sharp edges. Only one screw or rivet needed.

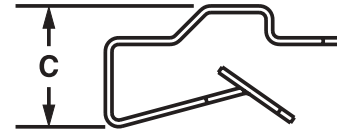
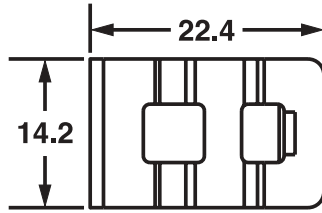
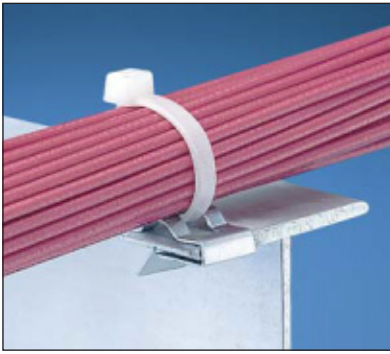


Part Number	Used With Cable Ties**	Diameter D	Material	Colour	Where Used	Mil. Std. Part Number	Mounting Method	Std. Pkg. Qty.	Std. Ctn. Qty.
LHMS-S5-C	M, I, S	3.2	Nylon 6.6	Natural	Indoors	—	M3 Screw or 3.2 Rivet	100	500
LHMS-S6-C		3.7				MS3340-1	M3 Screw or 3.5 Rivet	100	500
LHMS-S10-C		4.9				—	M5 Screw or 4.7 Rivet	100	500

\*\*Cable Tie Cross Section Sizes: M = Miniature, I = Intermediate, and S = Standard.

**Metal Clip-On Mounts**

The mount clips on sheet metal edges for fast mounting of harnesses with cable ties. Ties may be inserted from any of the four sides for easy harness orientation.

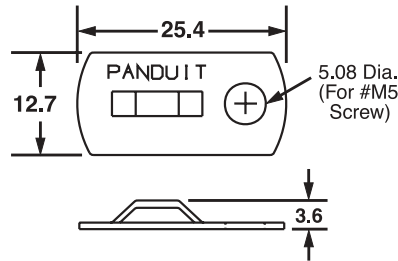


Part Number	Used With Cable Ties**	Dimensions mm	Height C	Max. Panel Thickness mm	Material	Where Used	Mounting Method	Std. Pkg. Qty.	Std. Ctn. Qty.
MCMS12-P-C	M, I, S	See Drawing	8.0	3.2	Zinc Plated Steel	Indoors/Outdoors	Clip-On	100	500
MCMS25-P-C			11.5	6.1				100	500
MCMS30-P-C			14.0	6.9				100	500

\*\*Cable Tie Cross Section Sizes: M = Miniature, I = Intermediate, and S = Standard.

**Metal Mount**

Screw applied aluminium mounting base for a secure support in demanding applications.



NOTE: Mount can also be installed with a user supplied adhesive.

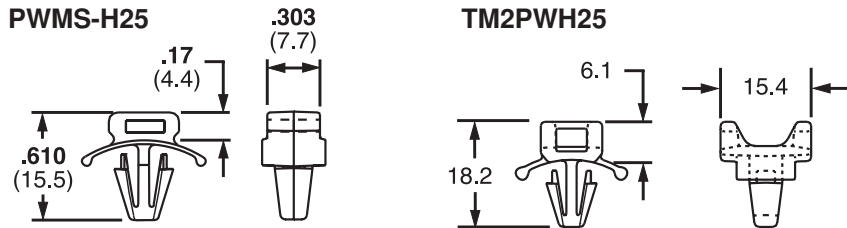
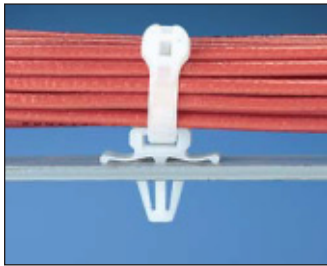


Part Number	Used With Cable Ties**	Dimensions mm	Material	Where Used	Mounting Method	Std. Pkg. Qty.	Std. Ctn. Qty.
MBMS-S10-CY	M, I, S	See Drawing	Aluminium	Indoors/Outdoors	M5 Screw	100	1000

\*\*Cable Tie Cross Section Sizes: M = Miniature, I = Intermediate, and S = Standard.

**Winged Push Mounts**

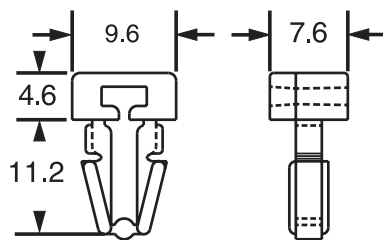
Push mounts require no adhesive or additional mounting hardware. They are inserted into pre-drilled holes. The winged base applies pressure on the panel wall to provide a more secure mount in high vibration applications. Can be used where only one side of the panel is accessible.



Part Number	Used With Cable Ties**	Dimensions mm	Max. Panel Thickness mm	Panel Hole Diameter mm	Material	Colour	Where Used	Mounting Method	Std. Pkg. Qty.	Std. Ctn. Qty.
PWMS-H25-C	M, I, S	See Drawing	2.7	6.4	Nylon 6.6	Natural	Indoors	Push Barb	100	1000
PWMS-H25-M0			2.7		Weather Resistant Nylon 6.6	Black	Outdoors		1000	5000
TM2PWH25-C			2.3		Nylon 6.6	Natural	Indoors		100	500

\*\*Cable Tie Cross Section Sizes: M = Miniature, I = Intermediate, and S = Standard.

**Push Mounts**



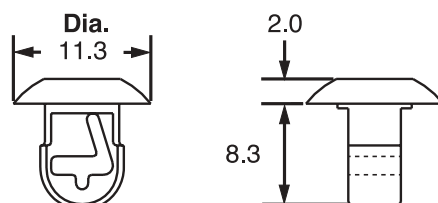
This part is a version of the mount shown above, but without tensioning wings.



Part Number	Used With Cable Ties**	Dimensions mm	Max. Panel Thickness	Panel Hole Diameter	Material	Colour	Where Used	Mounting Method	Std. Pkg. Qty.	Std. Ctn. Qty.
PM2H25-C	M, I, S	See Drawing	3.2	6.4	Nylon 6.6	Natural	Indoors	Push Barb	100	500
PM2H25-M0					Weather Resistant Nylon 6.6	Black	Outdoors		1000	5000
PM2H25-M30					Heat Stabilised Nylon 6.6	Black	Indoors		1000	5000

\*\*Cable Tie Cross Section Sizes: M = Miniature, I = Intermediate, and S = Standard.

**Push Button Mounts**



Designed for use where both sides of the panel are accessible.



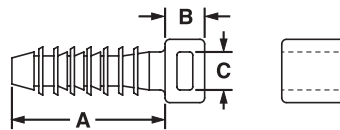
Part Number	Used With Cable Ties**	Dimensions mm	Max. Panel Thickness mm	Panel Hole Diameter mm	Material	Colour	Where Used	Mounting Method	Std. Pkg. Qty.	Std. Ctn. Qty.
PBMS-H25-C	M, I, S	See Drawing	3.2	6.4	Nylon 6.6	Natural	Indoors	Push Barb	100	1000
PBMS-H25-C14						Grey	Indoors		100	1000
PBMS-H25-M0					Weather Resistant Nylon 6.6	Black	Outdoors		1000	5000
PBMS-H25-M30					Heat Stabilised Nylon 6.6	Black	Indoors		1000	5000

\*\*Cable Tie Cross Section Sizes: M = Miniature, I = Intermediate, and S = Standard.

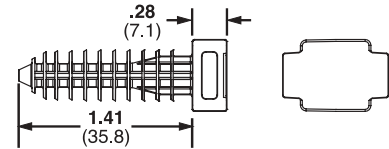


## Masonry Push Mounts

Used to secure wire, cable or tubing to masonry surfaces. Installed quickly into pre-drilled holes. Holds bundle securely.



MPMS19-C0  
MPMS25-C0  
MPMH38-L0



MPMWH32-L0



1. Drill hole using correct size bit.



2. Hammer mount into hole.



3. Place cable tie through mount.



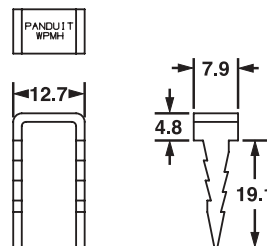
4. Install wires or cable.

Part Number	Used With Cable Ties**	Grip Length A	Height B	Drill Depth mm	Hole Diameter mm	Material	Colour	Where Used	Mounting Method	Std. Pkg. Qty.	Std. Ctn. Qty.
MPMS19-C0	M, I, S	24.6	6.4	31.8	5.0	Impact Modified Weather Resistant Nylon 6.6	Black	Outdoors	Tree Barb	100	500
MPMS25-C0	M, I, S	24.6	6.9	31.8	6.4					100	500
MPMH38-L0	M, I, S, LH, H & HLM	31.8	7.5	38.1	10.0					50	500
MPMWH32-L0	M, I, S, LH, H & HLM	35.8	7.1	35.8	8.0					50	500

\*\*Cable Tie Cross Section Sizes: M = Miniature, I = Intermediate, S = Standard, LH = Light-Heavy, H = Heavy and HLM = Hook and Loop Cable Ties.

## Wood Push Mount

Used to secure wire, cable, or tubing to wood surfaces. Driven into wood with hammer, barbed design holds mount in place — rated for 27Kg. pullout.



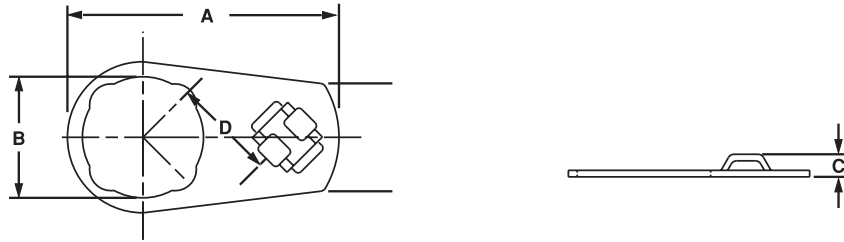
Part Number	Used With Cable Ties**	Dimensions mm	Material	Where Used	Mounting Method	Std. Pkg. Qty.	Std. Ctn. Qty.
WPMH-C	M, I, S, LH, H & HLM	See Drawing	Plated Steel	Indoors/Outdoors	Hammer into Wood	100	500

\*\*Cable Tie Cross Section Sizes: M = Miniature, I = Intermediate, S = Standard, LH = Light-Heavy, H = Heavy and HLM = Hook and Loop Cable Ties.

**Control Panel Mount**



Installed behind control panel switch. Ideal for high strain areas where cable is routed from panel door to panel. Compatible with most control panel switch designs.

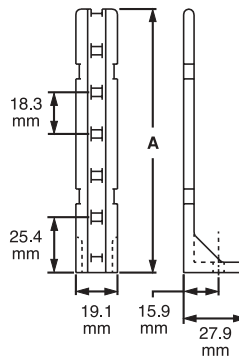


Part Number	Use With Cable Ties**	Length mm	Width mm	Height mm	Hole Diameter mm	Material	Mounting Method	Std. Pkg. Qty.	Std. Ctn. Qty.
		A	B	C	D				
CPM87S-C	M,I,S	51.1	22.6	4.3	22.6	Zinc Plated Steel	Control Panel Switch	100	1000
CPM122S-C		71.7	31.0	4.3	31.0				

\*\*Cable Tie Cross Section Sizes: M = Miniature, I = Intermediate, and S = Standard.

**PAN-POST™ Standoff**

Supports wire bundles above or away from surface

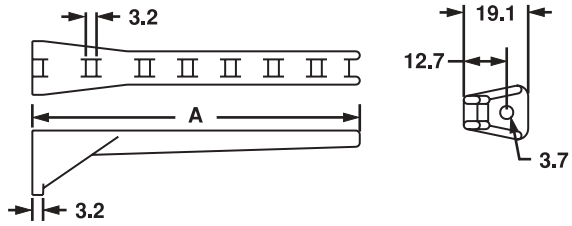
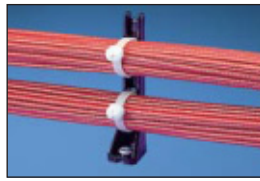


Part Number	Used With Cable Ties**	Height A	Diameter B	Colour	Material	Screw Size	Std. Pkg. Qty.	Std. Ctn. Qty.
		mm	mm					
PP1S-S10-X	M, I, S	50.8	5.1	Natural	Nylon 6.6	M5 Screw	10	100
PP1S-S12-X		50.8	5.8			M5.5 Screw		
PP2S-S10-X		116.8	5.1			M5 Screw		
PP2S-S12-X		116.8	5.8			M5.5 Screw		

\*\*Cable Tie Cross Section Sizes: M = Miniature, I = Intermediate, and S = Standard.

### Right Angle Base

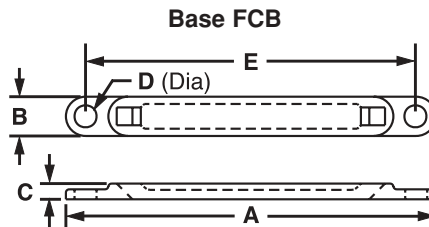
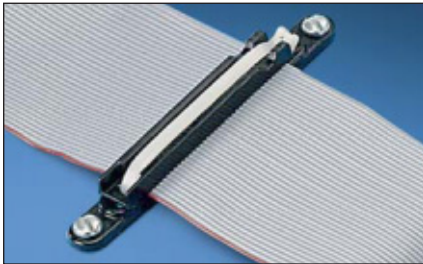
For use in perpendicular applications. Supports cable above the mount surface.



Part Number	Max. Flat Cable Width mm	Length A mm	Colour	Material	Where Used	Mounting Method	Std. Pkg. Qty.	Std. Ctn. Qty.
RAFCBI1-S6-C20	25.4	44.4	Black	Nylon 6.6	Indoors	M3 Screw	100	1000
RAFCBI2-S6-C20	50.8	70.6					100	1000
RAFCBI3-S6-C20	76.2	96.8					100	1000

### Flat Cable Mounting System

Secures stacked cables, folds and breakouts as well as laminated and moulded bus bars.



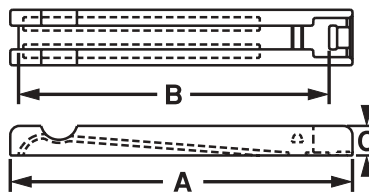
#### Mounting Application

Use one base, one corresponding size plate and one intermediate cable tie.



Part Number	Length mm A	Width mm B	Height mm C	Hole Diameter mm D	Hole Spacing mm E	Colour	Material	Where Used	Mounting Method	Std. Pkg. Qty.	Std. Ctn. Qty.
FCBI1-A-C20	83.5	9.5	3.8	5.1	—	Black	Nylon 6.6	Indoors	User supplied adhesive	100	1000
FCBI2-A-C20	88.9	9.5	3.8	5.1	—					100	1000
FCBI3-A-C20	114.8	9.5	3.8	5.1	—					100	1000
FCBI1-S10-C20	83.5	9.5	3.8	5.1	52.8	Black	Nylon 6.6	Indoors	M5 Screw	100	1000
FCBI2-S10-C20	88.9	9.5	3.8	5.1	78.7					100	1000
FCBI3-S10-C20	114.8	9.5	3.8	5.1	104.6					100	1000

### Plate FCP



#### Bundling Application

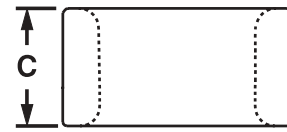
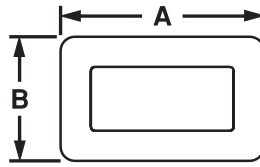
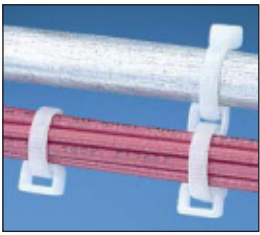
Use two plates (same size) and one intermediate cable tie.



Part Number	Maximum Flat Cable Width mm	Length mm A	Width mm B	Height mm C	Colour	Material	Where Used	Mounting Method	Std. Pkg. Qty.	Std. Ctn. Qty.
FCPI1-C20	25.4	32.8	26.4	5.1	Black	Nylon 6,6	Indoors	Cable Ties	100	1000
FCPI2-C20	50.8	58.7	51.8	5.1					100	1000
FCPI3-C20	76.2	84.3	77.2	5.1					100	1000

**Closed Connector Rings**

Connect multiple wire bundles or hang bundles from conduit, eliminating the need for saddle clamps.

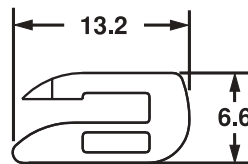


Part Number	Used With Cable Ties**	Length A	Width B	Height C	Material	Colour	Where Used	Mounting Method	Std. Pkg. Qty.	Std. Ctn. Qty.
		mm	mm	mm						
CR2-M	M, I, S	8.4	5.1	5.0	Nylon 6.6	Natural	Indoors	Cable Ties	1000	10000
CR4H-M	M, I, S, LH	14.5	7.6	9.1						
CR4H-M0	M, I, S, LH	14.5	7.6	9.1	Weather Resistant Nylon 6.6	Black	Indoors/Outdoors		1000	10000

\*\*Cable Tie Cross Section Sizes: M = Miniature, I = Intermediate, S = Standard and LH = Light-Heavy.

**Open Connector Ring**

Designed to “add on” wire bundles without changing cable ties.



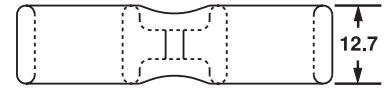
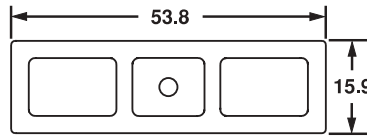
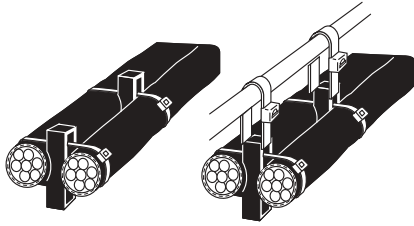
Part Number	Used With Cable Ties**	Dimensions mm	Material	Colour	Where Used	Mounting Method	Std. Pkg. Qty.	Std. Ctn. Qty.
CROS-M	M, I, S	See Drawing	Nylon 6.6	Natural	Indoors	Connects to M,I,S Cable Ties	1000	5000

\*\*Cable Tie Cross Section Sizes: M = Miniature, I = Intermediate, and S = Standard.



**Cable Spacers**

Used to separate and/or hang wires, cable and hoses.

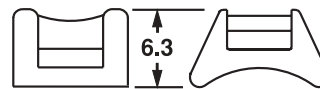
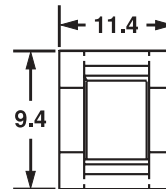


Part Number	Used With Cable Ties**	Dimensions mm	Material	Colour	Where Used	Mounting Method	Std. Pkg. Qty.	Std. Ctn. Qty.
CSH-D20	M, I, S, LH, H	See Drawing	Nylon 6.6	Black	Indoors	Cable Ties	500	2500
CSH-D0			Weather Resistant Nylon 6.6		Indoors/Outdoors		500	2500

\*\*Cable Tie Cross Section Sizes: M = Miniature, I = Intermediate, S = Standard, LH = Light-Heavy and H = Heavy.

**Cable Spacer — Cross**

Connects two bundles at 90°. Provides 4.8mm space between bundles. Dual cradle design. Recommended max. bundle diameter (each) is 15.9mm.



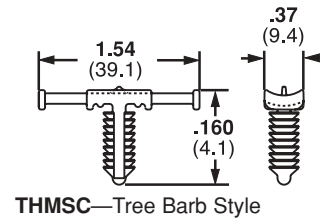
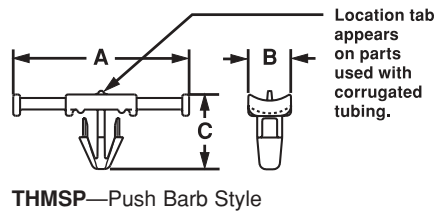
Part Number	Used With Cable Ties**	Dimensions mm	Material	Colour	Where Used	Mounting Method	Std. Pkg. Qty.	Std. Ctn. Qty.
CSCS-M	M, I, S	See Drawing	Nylon 6.6	Natural	Indoors	Cable Ties	1000	10000

\*\*Cable Tie Cross Section Sizes: M = Miniature, I = Intermediate, and S = Standard.

**Tie Harness Mounts**



Tie Harness Mounts are designed to be attached to the wire harness during assembly with 2 cable ties. Ties can be installed by hand or, more efficiently, with *PANDUIT PAT* Automatic Cable Tie Tooling. Use with Harness Board Standoff Post found on page 140. Available with or without corrugated loom tubing location tab.



Part Number	Used With Cable Ties	Length A mm	Width B mm	Height C mm	Max. Panel Thickness mm	Panel Hole Diameter Range mm	Material	Colour	Where Used	Mounting Method	Std. Pkg. Qty.	Std. Ctn. Qty.
											100	1000
<b>THMSP20-C</b>	M, I, S	39	9.4	16.5	4.1	6.2 - 7.2	Nylon 6.6	Natural	Indoors	Push Barb	100	1000
<b>THMSP20-C30</b>							Heat Stabilised Nylon 6.6	Black	Indoors/High Temp		100	1000
<b>THMSP25-C</b>							Nylon 6.6	Natural	Indoors		100	1000
<b>THMSP25-C30</b>							Heat Stabilised Nylon 6.6	Black	Indoors/High Temp		100	1000
<b>THMSC35-C630</b>				11.7	6.4	6.2 - 6.8	Heat Stabilised Nylon 6	Black	Indoors/High Temp	Tree Barb	100	1000
<b>THMSC35-C639</b>							Nylon 6	Natural			100	1000

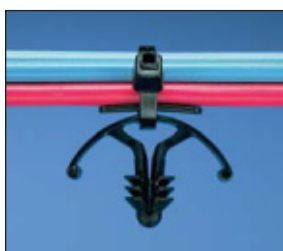
**FOR CORRUGATED LOOM TUBING - A location tab on the mount shelf aligns with the corrugated tubing grooves to ensure proper mount location during assembly**

**FOR DISCRETE WIRING - No location tab for applications not requiring the use of corrugated loom tubing**

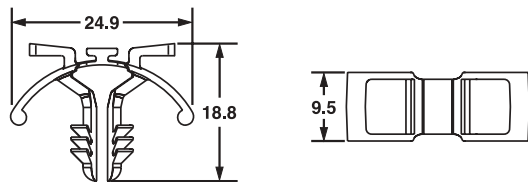
<b>THMSP20F-C</b>	M, I, S	39	9.4	16.5	4.1	6.2 - 7.2	Nylon 6.6	Natural	Indoors	Push Barb	100	1000
<b>THMSP20F-C30</b>							Heat Stabilised Nylon 6.6	Black	Indoors/High Temp		100	1000
<b>THMSP25F-C</b>							Nylon 6.6	Natural	Indoors		100	1000
<b>THMSP25F-C30</b>							Heat Stabilised Nylon 6.6	Black	Indoors/High Temp		100	1000
<b>THMSC35F-C630</b>				11.7	6.4	6.2 - 6.8	Heat Stabilised Nylon 6	Black	Indoors/High Temp	Tree Barb	100	1000
<b>THMSC35F-C639</b>							Nylon 6	Natural			100	1000

\*\*Cable Tie Cross Section Sizes: M = Miniature, I = Intermediate, and S = Standard.

**Tie Harness Mount for Single Cable Tie — Unique mount is attached to harness automatically as tie is installed**



- Secured with only 1 cable tie
- Can be used with auto-fed or loose piece cable ties
- Cable ties can be installed by hand with *PANDUIT* Automatic Cable Tie Tooling Installation Systems or pneumatic tool or hand operated cable tie tools
- Winged design prevents vibration
- Barb design is easy to insert into pre-drilled hole
- 22.5Kg. vertical extraction force from 6.0mm hole

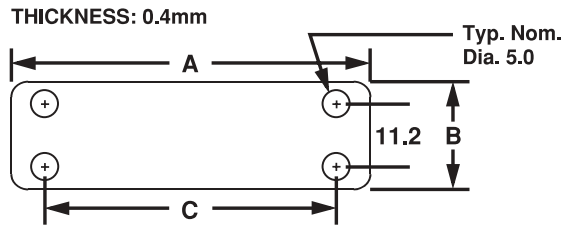


Part Number	Used With Cable Ties**	Dimensions mm	Panel Thickness mm	Panel Hole Diameter mm	Material	Colour	Where Used	Mounting Method	Std. Pkg. Qty.	Std. Ctn. Qty.
<b>THM1SC-C</b>	M, I, S	See Drawing	3.4	6.5	Nylon 6.6	Natural	Indoors	Push Barb	100	1000
<b>THM1SC-C30</b>					Heat Stabilised Nylon 6.6	Black	Indoors/High Temp		100	1000

\*\*Cable Tie Cross Section Sizes: M = Miniature, I = Intermediate, and S = Standard.

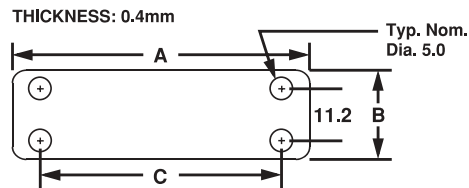
## Marker Plates

PANDUIT Marker Plates can be mounted in any direction, either vertically or horizontally as flags, tags, or wrap-around identification plates. They can be marked with pens found on this page.



Part Number	Used With Cable Ties**	Length A	Width B	Hole Spacing C	Material	Colour	Where Used	Mounting Method	Std. Pkg. Qty.	Std. Ctn. Qty.
		mm	mm	mm						
MP150-C	M, I, S	38.1	19.0	26.2	Nylon 6.6	White	Indoors	Cable Ties	100	500
MP175-C		44.4	19.0	32.5					100	500
MP200-C		50.8	19.0	38.9					100	500
MP250-C		63.5	19.0	51.6					100	500
MP350-C		88.9	19.0	77.0					100	1000
MP250W175-C		63.5	19.0	51.6					100	1000
MP150-C0	M, I, S	38.1	19.0	26.2	Weather Resistant Nylon 6.6	Black	Outdoors	Weather Resistant Cable Ties	100	500
MP175-C0		44.4	19.0	32.5					100	500
MP200-C0		50.8	19.0	38.9					100	500
MP250-C0		63.5	19.0	51.6					100	500
MP350-C0		88.9	19.0	77.0					100	1000

\*\*Cable Tie Cross Section Sizes: M = Miniature, I = Intermediate, and S = Standard.



## Marker Plates on Rolls

Part Number	Used With Cable Ties**	Length A	Width B	Hole Spacing C	Material	Colour	Where Used	Mounting Method	Std. Pkg. Qty.	Std. Ctn. Qty.
		mm	mm	mm						
MP150-R	M, I, S	38.1	19.0	26.2	Nylon 6.6	White	Indoors	Cable Ties	1000	5000
MP175-R		44.4	19.0	32.5					1000	5000
MP200-R		50.8	19.0	38.9					1000	5000
MP250-R		63.5	19.0	51.6					1000	5000

\*\*Cable Tie Cross Section Sizes: M = Miniature, I = Intermediate, and S = Standard.

## Marking Pens

Provide fast drying, permanent, legible identification on nylon —where ordinary marking pens will not work.

PX-0  
PX-2



PX-10



PFX-0  
PFX-2

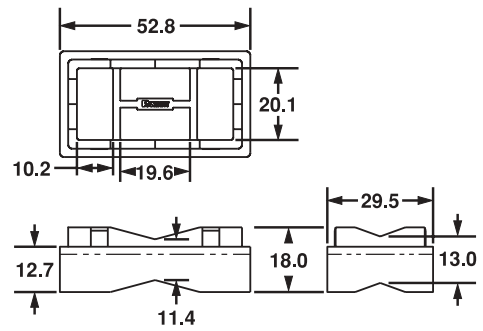
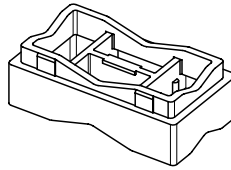


Part Number	Part Description	Std. Pkg. Qty.	Std. Ctn. Qty.
PX-0	Permanent marking pen, regular tip, black ink.	12	144
PX-2	Permanent marking pen, regular tip, red ink.	12	144
PX-10	Marking pen, regular tip, white ink (for marking black or other dark-colored parts).	12	300
PFX-0	Permanent marking pen - fine tip, black ink.	12	144
PFX-2	Permanent marking pen - fine tip, red ink.	12	144

Order the number of mounts required in multiples of standard package quantities.

### Stackable Cable Spacer

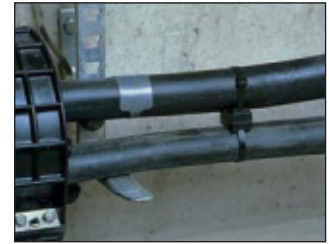
Just one part to inventory. Each spacer snaps by hand into another — increases spacer height by 12.7mm increments. Because there is only one part, on-site sorting is eliminated. Can be used with up to 19mm width lashed cable supports in parallel or perpendicular applications.



Used perpendicular to strand and cable



Used parallel to strand and cable



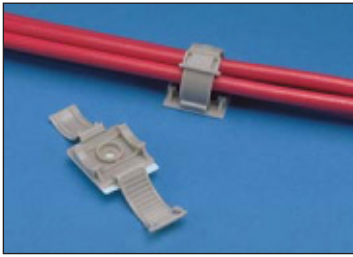
Underground application

Part Number	Used with Cable Ties	Dimensions mm	Material	Colour	Where Used	Mounting Method	Std. Pkg. Qty.	Std. Ctn. Qty.
SACS50-T100	^See Footnote	See Drawing	Weather Resistant Polypropylene	Black	Outdoors	Cable Ties	200	2000

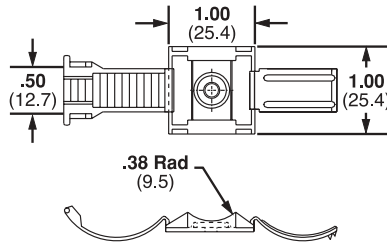
^Stackable Spacers may be installed using Weather-Resistant Lashing Ties. Weather-Resistant Extra-Heavy and Light-Heavy Cable Ties and Stainless Steel Ties.



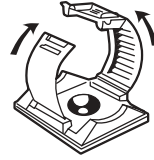
## CLINCHER™ Adjustable Releasable Clamp



This clamp provides a fast and convenient method of securing bundles from 4.8mm up to 17.5mm diameter. It is available with adhesive backing or screw applied with one M3 screw.



The CLINCHER™ clamp is fast and easy to use...

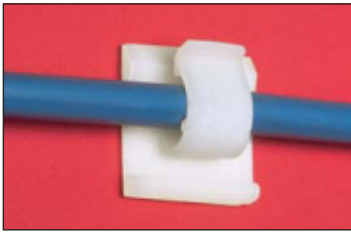


Lift tab to release

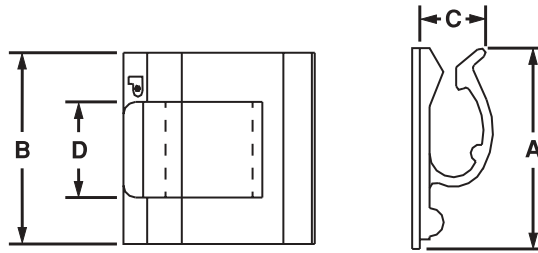


Part Number	Bundle Diameter Range mm	Material	Colour	Where Used	Mounting Method	Max Static Load g	Std. Pkg. Qty.	Std. Ctn. Qty.
ARC.68-A-Q	4.8- 17.5	Polypropylene	White	Indoors	Rubber Adhesive	227	25	250
ARC.68-A-Q14			Grey		Rubber Adhesive		25	250
ARC.68-S6-Q			White		M3 Screw	—	25	250
ARC.68-S6-Q14			Grey		M3 Screw		25	250

### Adhesive Backed Cord Clips



Three sizes of clips to hold cords, tubing, cable, or wire bundles up to 15.7mm diameter. Bundles are easily snapped into or out of the clips.

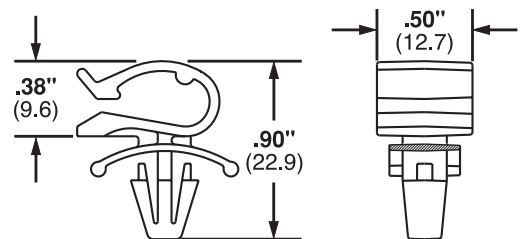


Part Number	Max. Bundle Diameter mm	Length A mm	Width B mm	Height C mm	Clip Width D mm	Material	Colour	Where Used	Adhesive Type	Max Static Load g	Std. Pkg. Qty.	Std. Ctn. Qty.
ACC19-AT-C	ACC19-A-C20	ACC19-AT-C0	Nylon 6.6	Natural	Indoors/High Temp	Acrylic	100	500				
ACC19-A-C20	ACC19-AT-C0	ACC19-A-C20	ACC19-AT-C0	Nylon 6.6	Black	Indoors	Rubber	100	500			
ACC19-AT-C0	ACC19-A-C20	ACC19-AT-C0	ACC19-AT-C0	Weather Resistant Nylon 6.6	Black	Indoors/Outdoors	Acrylic	100	500			
ACC38-A-C	ACC38-AT-C	ACC38-A-C20	ACC38-AT-C0	Nylon 6.6	Natural	Indoors	Rubber	227	100	500		
ACC38-AT-C	ACC38-A-C20	ACC38-AT-C0	Nylon 6.6	Natural	Indoors/High Temp	Acrylic	100		500			
ACC38-A-C20	ACC38-AT-C0	ACC38-A-C20	ACC38-AT-C0	Nylon 6.6	Black	Indoors	Rubber		100	500		
ACC38-AT-C0	ACC38-A-C20	ACC38-AT-C0	ACC38-AT-C0	Weather Resistant Nylon 6.6	Black	Indoors/Outdoors	Acrylic		100	500		
ACC62-A-C	ACC62-AT-C	ACC62-A-C20	ACC62-AT-C0	Nylon 6.6	Natural	Indoors	Rubber	318	100	500		
ACC62-AT-C	ACC62-A-C20	ACC62-AT-C0	Nylon 6.6	Natural	Indoors/High Temp	Acrylic	100		500			
ACC62-A-C20	ACC62-AT-C0	ACC62-A-C20	ACC62-AT-C0	Nylon 6.6	Black	Indoors	Rubber		100	500		
ACC62-AT-C0	ACC62-A-C20	ACC62-AT-C0	ACC62-AT-C0	Weather Resistant Nylon 6.6	Black	Indoors/Outdoors	Acrylic		100	500		

### Push Mount Cord Clip

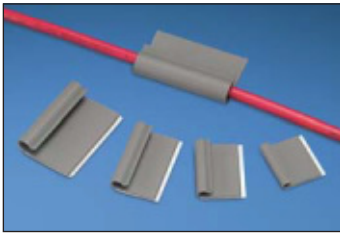


Mounts snaps easily into pre-drilled holes. Integral mounting device eliminates the need for additional mounting hardware. The winged design holds mount in place in applications where vibration is present.

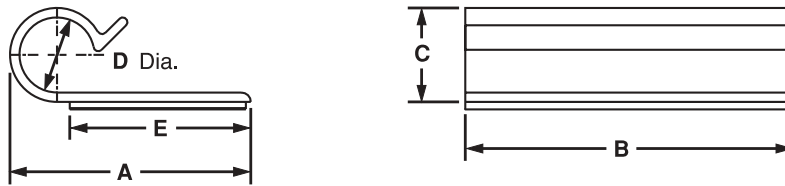


Part Number	Max. Bundle Diameter mm	Dimensions mm	Material	Colour	Where Used	Panel Dimensions mm		Mounting Method	Std. Pkg. Qty.	Std. Ctn. Qty.
						Max. Thickness	Hole Diameter			
PMCC09H06-M30	9.6	See drawing	Heat Stabilised Nylon 6.6	Black	Outdoors	2.7	6.4	Push Barb	1000	5000
PMCC38H25-C	9.6		Nylon 6.6	Natural	Indoors	2.7	6.4	Push Barb	100	1000
PMCC38H25-M0	9.6		Weather Resistant Nylon 6.6	Black	Outdoors	2.7	6.4	Push Barb	1000	5000

**"J" Clips**

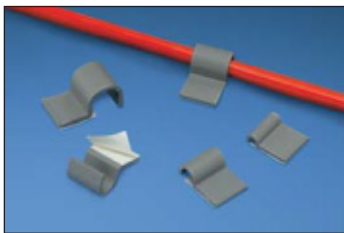


These low profile "J" clips retain cords, wires, or tubing and are available in five sizes. Their flexible design allows for easy cord insertion yet holds bundles tightly.

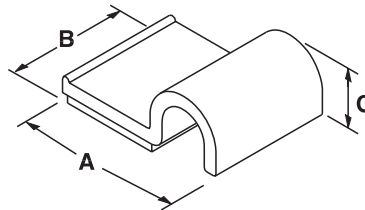


Part Number	Max. Bundle Diameter mm	Length mm A	Width mm B	Height mm C	Diameter mm D	Colour	Material	Where Used	Mounting Method	Max Static Load g	Std. Pkg. Qty.	Std. Ctn. Qty.
AJC12-A-C	3.0	25.4	21.8	4.8	3.3	Grey	PVC	Indoors	Rubber Adhesive	181	100	1000
AJC19-A-C	4.8	31.8	22.1	6.6	4.6					227	100	1000
AJC25-A-C	6.4	38.1	24.6	7.9	5.8					263	100	1000
AJC31-A-C	7.9	44.5	30.1	10.2	7.4					408	100	1000
AJC38-A-C	9.6	50.8	32.3	12.7	9.9					454	100	1000

**A1C Type Clips**



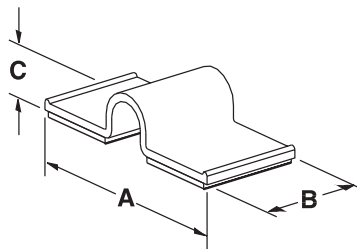
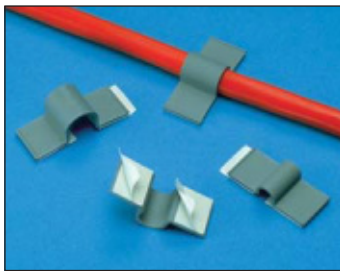
Holds cords, cables and tubing. Single adhesive pad for confined areas.



Part Number	Max. Bundle Dia. mm	Length mm A	Width mm B	Height mm C	Material	Colour	Where Used	Mounting Method	Max. Static Load g	Std. Pkg. Qty.	Std. Ctn. Qty.
A1C12-A-C8	3.0	19.6	16.0	5.8	PVC	Grey	Indoors	Rubber Adhesive	64	100	1000
A1C25-A-C8	6.4	23.1	16.0	9.7						100	1000
A1C38-A-C8	9.5	26.4	16.0	13.0						100	1000
A1C50-A-C8	12.7	29.7	16.0	16.3						100	1000

### A2C Type Clips

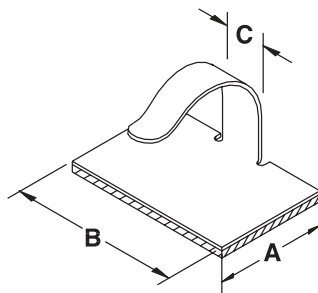
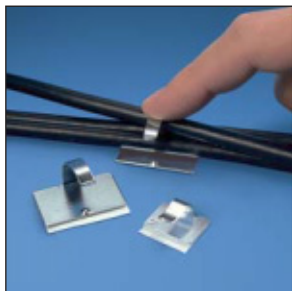
Holds cords, cables and tubing. Two adhesive pads for added strength.



Part Number	Max. Bundle Dia. mm	Length mm	Width mm	Height mm	Material	Colour	Where Used	Mounting Method	Max. Static Load g	Std. Pkg. Qty.	Std. Ctn. Qty.
		A	B	C							
A2C12-A-C8	3.0	33.0	16.0	5.8	PVC	Grey	Indoors	Rubber Adhesive	169	100	1000
A2C25-A-C8	6.4	36.3	16.0	9.1						100	1000
A2C38-A-C8	9.5	39.6	16.0	12.4						100	1000
A2C50-A-C8	12.7	43.7	16.0	15.5						100	1000

### Metal Adhesive Backed Cord Clips

Metal adhesive backed cord clip can be opened and closed without damage to the clip, to remove or add wires quickly and easily.

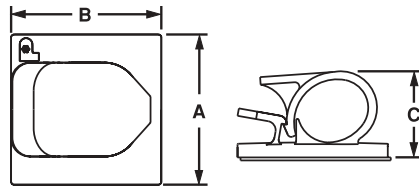
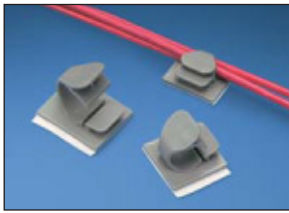


Part Number	Max. Bundle Dia. mm	Length mm	Width mm	Clip Width mm	Material	Colour	Where Used	Mounting Method	Max. Static Load g	Std. Pkg. Qty.	Std. Ctn. Qty.
		A	B	C							
MACC25-A-C	6.4	13.7	20.0	7.1	Zinc Plated Steel	—	Indoors	Rubber Adhesive	95	100	1000
MACC62-A-C	15.7	19.7	30.0	7.1					200	100	1000

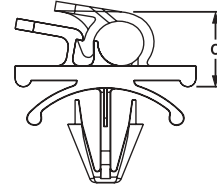


### Latching Wire Clips

Holds wires, cable and tubing and is available in 6 sizes, with releasable latch. Adhesive backed and push mount styles available. Large mounting base for high bonding strength.



Adhesive Version



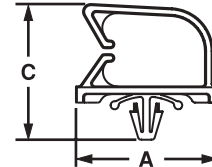
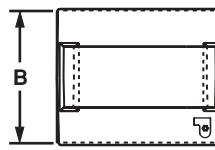
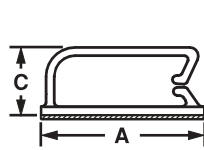
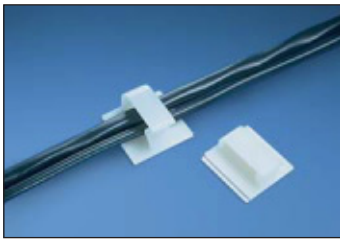
Push Mount Version



Part Number	Max. Bundle Dia. mm	Length mm A	Width mm B	Height mm C	Material	Colour	Where Used	Panel Thickness mm		Mounting Method	Max. Static Load g	Std. Pkg. Qty.	Std. Ctn. Qty.																
								Max. Thickness	Hole Diameter																				
LWC19-A-C	4.8	15.5	21.6	9.9	Nylon 6.6	Natural	Indoors	—	—	Rubber Adhesive	113	100	1000																
LWC19-A-C14						Grey						100	1000																
LWC19-A-C20						Black						100	1000																
LWC25-A-C	6.4	25.4	22.2	11.4		Natural					Indoors	—	—	Rubber Adhesive	204	100	1000												
LWC25-A-C14						Grey										100	1000												
LWC25-A-C20						Black										100	1000												
LWC38-A-C	9.5	25.4	25.4	14.2		Natural									Indoors	—	—	Rubber Adhesive	227	100	1000								
LWC38-A-C14						Grey														100	1000								
LWC38-A-C20						Black														100	1000								
LWC50-A-L	12.7	25.4	32.0	17.0		Natural													Indoors	—	—	Rubber Adhesive	284	50	500				
LWC50-A-L14						Grey																		50	500				
LWC50-A-L20						Black																		50	500				
LWC75-A-L	19.1	31.5	37.6	22.9		Natural																	Indoors	—	—	Rubber Adhesive	417	50	500
LWC75-A-L14						Grey																						50	500
LWC75-A-L20						Black																						50	500
LWC100-A-L	25.4	50.0	56.1	32.0	Natural	Indoors	—	—	Rubber Adhesive	1020																	50	500	
LWC100-A-L14					Grey																						50	500	
LWC100-A-L20					Black																						50	500	
LWC19-H25-C	4.8	12.8	21.6	10.4	Natural					Indoors	2.6	5.6	Push Barb	—													100	1000	
LWC19-H25-C14					Grey																						100	1000	
LWC25-H25-C					Natural																						100	1000	
LWC25-H25-C14	6.4	14.7	21.8	11.9	Grey									Indoors	2.6	5.6	Push Barb	—									100	1000	
LWC25-H25-C20					Black																						100	1000	
LWC38-H25-C					Natural																						100	1000	
LWC38-H25-C14	9.5	14.7	23.9	14.5	Grey													Indoors	2.6	5.6	Push Barb	—					100	1000	
LWC38-H25-C20					Black																						100	1000	
LWC50-H25-L					Natural																						50	500	
LWC50-H25-L14	12.7	19.3	31.8	19.8	Grey																	Indoors	2.6	5.6	Push Barb	—	50	500	
LWC50-H25-L20					Black																						50	500	
LWC75-H25-L					Natural																						50	500	
LWC75-H25-L14	19.1	22.1	36.8	24.7	Grey	Indoors	2.6	5.6	Push Barb																	—	50	500	
LWC75-H25-L20					Black																						50	500	
LWC100-H25-L					Natural																						50	500	
LWC100-H25-L14	25.4	25.4	47.9	33.0	Grey					Indoors	2.6	5.6	Push Barb													—	50	500	
LWC100-H25-L20					Black																						50	500	

## Bevel Entry Clips

Bevel Entry Clip are available in 3 sizes to hold tubing, cable or wire bundles. The beveled entry makes it easy to snap in the bundle. The clips are available in push barb or adhesive backed styles.



Adhesive Version

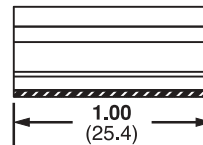
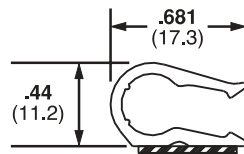
Push Mount Version



Part Number	Max. Bundle Dia. mm	Length mm A	Width mm B	Height mm C	Material	Colour	Where Used	Max. Panel Thickness mm	Hole Dia. mm	Mounting Method	Max. Static Load g	Std. Pkg. Qty.	Std. Ctn. Qty.
BEC38-A-L	9.6	37.1	31.5	13.2	Nylon 6.6	Natural	Indoors	—	—	Rubber Adhesive	411	50	500
BEC38-A-L20	9.6	37.1	31.5	13.2		Black	Indoors	—	—	Rubber Adhesive	411	50	500
BEC38-AT-L0	9.6	37.1	31.5	13.2		Black	Outdoors	—	—	Acrylic Adhesive	411	50	500
BEC62-A-L	15.7	37.1	31.5	20.1		Natural	Indoors	—	—	Rubber Adhesive	411	50	500
BEC62-A-L20	15.7	37.1	31.5	20.1		Black	Indoors	—	—	Rubber Adhesive	411	50	500
BEC62-AT-L0	15.7	37.1	31.5	20.1		Black	Outdoors	—	—	Acrylic Adhesive	411	50	500
BEC75-A-L	19.0	37.1	37.8	22.6		Natural	Indoors	—	—	Rubber Adhesive	493	50	500
BEC75-A-L20	19.0	37.1	37.8	22.6		Black	Indoors	—	—	Rubber Adhesive	493	50	500
BEC75-AT-L0	19.0	37.1	37.8	22.6		Black	outdoors	—	—	Acrylic Adhesive	493	50	500
BECP38H25-L	9.6	37.1	18.5	25.4		Natural	Indoors	1.9	6.4	Inserted into pre-drilled hole	—	50	500
BECP38H25-L20	9.6	37.1	18.5	25.4		Black	Indoors	1.9	6.4		—	50	500
BECP75H25-L	19.0	37.3	18.5	34.3		Natural	Indoors	1.9	6.4		—	50	500
BECP75H25-L20	19.0	37.3	18.5	34.3	Black	Indoors	1.9	6.4	—		50	500	

## Adhesive Backed Dual Cord Clip

Holds two cables in high temperature applications both indoors and outdoors

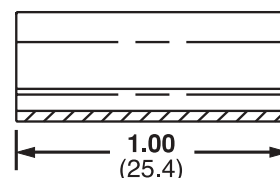
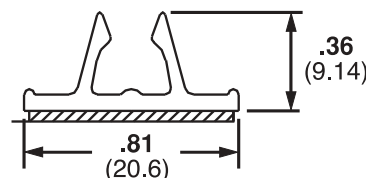


Part Number	Max. Bundle Diameter mm	Material	Colour	Where Used	Mounting Method	Max. Static Load g	Std. Pkg. Qty.	Std. Ctn. Qty.
ADCC31-AT-C10	2 Bundles 5.1 -7.9	NORYL•	White	Indoors/ Outdoors	Acrylic Adhesive	113	100	500

•NORYL Thermoplastic Resin is a Registered Trademark of General Electric Co.

## Adhesive Backed Cord Clip

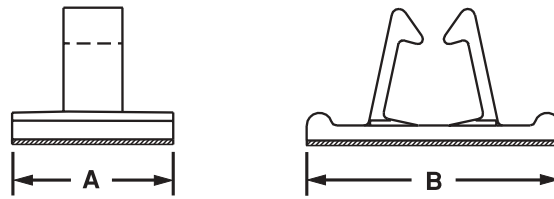
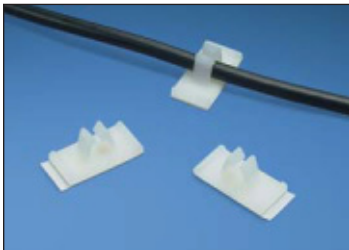
Holds a single cable and can be mounted on any flat smooth surface both indoors and outdoors



Part Number	Max. Bundle Diameter mm	Material	Colour	Where Used	Mounting Method	Max. Static Load g	Std. Pkg. Qty.	Std. Ctn. Qty.
AMC25-AT-C10	2 bundles 6 -7	PVC	White	Indoors/ Outdoors	Acrylic Adhesive	182	100	1000

### Vertical Cord Clip

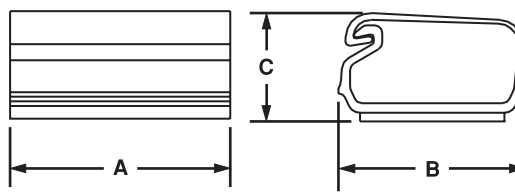
Funnel entry design of this vertical cord clip allows for easy insertion of wires, cables and cords. Top loading for fast production operations



Part Number	Max. Bundle Diameter mm	Length mm			Material	Colour	Where Used	Mounting Method	Max. Static Load g	Std. Pkg. Qty.	Std. Ctn. Qty.
		A	B	C							
VCC25-A-C	6.4	12.7	25.4	11.2	Nylon 6.6	Natural	Indoors	Rubber Adhesive	113	100	500
VCC50-A-C	12.7	25.4	39.7	20.6		Natural			354	100	500

### Adhesive Backed Latching Clips

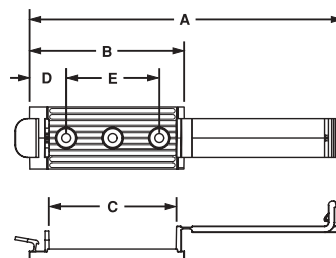
This versatile clip retains and supports wire for a variety of applications. Provides a quickly installed mount with a locked cover which withstands vibration yet allows easy access.



Part Number	Max. Bundle Diameter mm	Length mm			Material	Colour	Where Used	Mounting Method	Max. Static Load g	Std. Pkg. Qty.	Std. Ctn. Qty.
		A	B	C							
LC3-A-C8	5.0	19.1	19.8	11.9	PVC	Grey	Indoors	Rubber Adhesive	100	100	1000
LC5-A-C8	9.1	25.4	25.7	15.5					200	100	1000
LC10-A-L8	23.6	25.4	38.4	21.3					272	50	500

### Cable Holder – Adhesive Backed

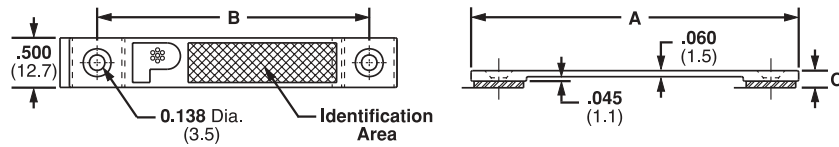
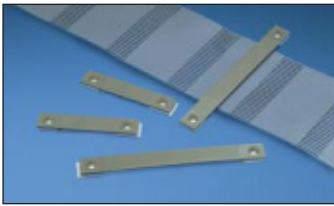
Holds wires, cables and tubing and has a releasable latch. Adhesive backed and screw mount styles available. Large mounting base for high bonding strength.



Part Number	Cable Width mm	Dimensions mm	Material	Colour	Where Used	Mounting Method	Max. Static Load g	Std. Pkg. Qty.	Std. Ctn. Qty.
CH105-A-C14	50.8	See Drawing	Nylon 6.6	Grey	Indoors	Rubber Adhesive	582	100	200
CH105-S6-C14						2 M3 Screws	—		

### Low Profile Flat Cable Mounts

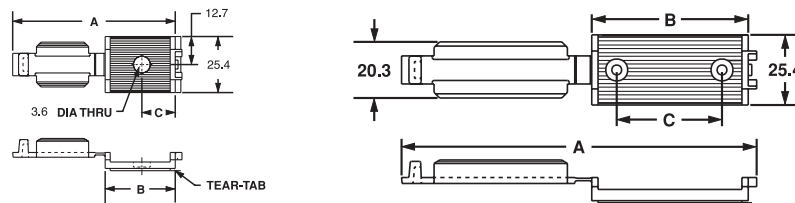
This low profile mount is available in 3 sizes and provides cost effective cable containment and identification for stack heights up to 2.67 mm. It features a matte, textured surface for either hand written identification or application of computer labels.



Part Number	Cable Width mm	Length mm			Material	Colour	Where Used	Mounting Method	Std. Pkg. Qty.	Std. Ctn. Qty.
		A	B	C						
LPF14-A-C14	37	65	50.8	3.4	Nylon 6.6	Grey	Indoors	Rubber Adhesive/ Static Load 113g or 2 M3 Screws	100	500
LPF22-A-C14	56	84	69.9	3.4					100	500
LPF34-A-C14	87	115.8	101.6	3.4					100	500

### Latching Flat Cable Mounts

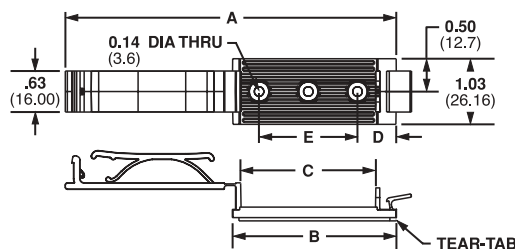
The FCM will hold flat cable securely without damaging the cable's jacket or conductors. The four available sizes will accommodate cable up to 82.6mm wide and allow cable stacking up to 4.3mm. All sizes are available with or without adhesive backing.



Part Number	Cable Width mm	Length mm			Material	Colour	Where Used	Mounting Method	Std. Pkg. Qty.	Std. Ctn. Qty.
		A	B	C						
<b>Adhesive Backed</b>										
FCM1-A-C14	26.7	73.7	30.7	—	Nylon 6.6	Grey	Indoors	Rubber Adhesive/Static Load 227g	100	500
FCM1.2-A-C14	30.5	80.3	34.8	—				Rubber Adhesive/Static Load 281g	100	500
FCM2-A-C14	52.1	128.5	56.4	38.1				Rubber Adhesive/Static Load 454 g	100	500
FCM3.25-A-L14	82.5	185.4	85.9	82.0				Rubber Adhesive/Static Load 681 g	50	500
<b>Screw Mounted</b>										
FCM1-S6-C14	26.7	73.7	30.7	—	Nylon 6.6	Grey	Indoors	M3 Screw	100	500
FCM1.2-S6-C14	30.5	80.3	34.8	—				100	500	
FCM2-S6-C14	52.1	128.5	56.4	38.1				2 M3 Screws	100	500
FCM3.25-S6-L14	82.5	185.4	85.9	82.0				50	500	

### Latching Flat Cable Holder

The FCH part is designed for flat cable up to a stack height of 6.3mm or discrete wire. It is available with adhesive backing or can be screw applied.

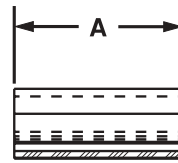
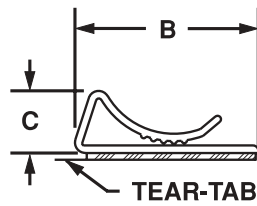
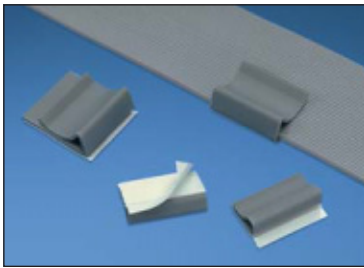


Part Number†	Cable Width mm	Dimensions mm	Material	Colour	Where Used	Mounting Method	Std. Pkg. Qty.	Std. Ctn. Qty.
FCH2-A-C14	50.8	See Drawing	Nylon 6.6	Grey	Indoors	Rubber Adhesive/ Static Load 454g	100	500
FCH2-S6-C14						2 M3 Screws	100	500



### Flat Cable Clips

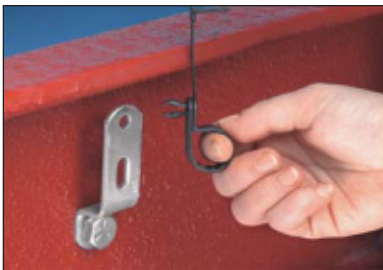
Used with any width flat cable for a maximum stack height of 4.3mm.



Part Number	Cable Width mm	Length mm	Width mm	Height mm	Material	Colour	Where Used	Mounting Method	Std. Pkg. Qty.	Std. Ctn. Qty.
		A	B	C						
FCC5-A-C8	Any Width flat cable	25.4	14.2	7.4	PVC	Grey	Indoors	Rubber Adhesive/Static Load 113g	100	1000
FCC-A-C8		25.4	27.7	9.7				Rubber Adhesive/Static Load 227g		

### PAN-CLAMP™ Heavy Duty Fixed Diameter Clamp

- One-piece design significantly reduces installation time
- Integrated ribs prevent rotation of cable bundles and ensures secure grip on hoses



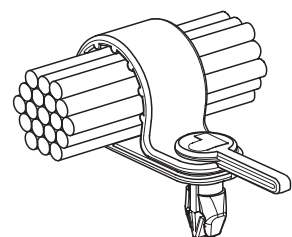
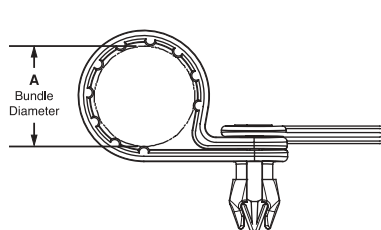
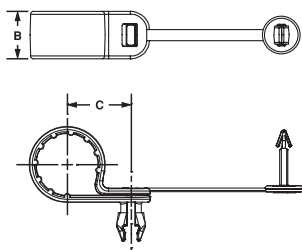
1. Install into 3.2mm thick panel or bracket with a hole diameter of 7.1mm typical clearance hole for 6mm bolts



2. Moulded bars keep the clamp secured in the hole during assembly



3. Rivet installs easily by hand. No special tools required



Part Number	Width mm	Max. Bundle Diameter mm	Bundle Offset mm	Material	Colour	Panel Hole Diameter mm	Panel Thickness mm	Std. Pkg. Qty.	Std. Ctn. Qty.
	A	B	C						
PC038-H25D-C0	15.9	9.5	16.3	Impact Modified Weather Resistant Nylon 6.6	Black	7.0	3.2	100	500
PC050-H25D-C0	15.9	12.7	17.9						
PC062-H25D-C0	15.9	15.8	19.5						
PC075-H25D-C0	15.9	19.1	21.5						
PC087-H25D-C0	15.9	22.1	22.7						
PC100-H25D-C0	15.9	25.4	24.3						
PC112-H25D-C0	15.9	28.5	25.8						
PC125-H25D-C0	15.9	31.8	27.4						

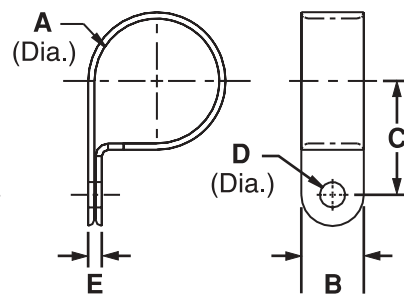
Order the number of mounts required in multiples of standard package quantities.

**Fixed Diameter Cable Clamps**

Durable nylon cable clamps are available in two widths: 9.5mm wide for standard use and 12.7 wide for heavy duty use.



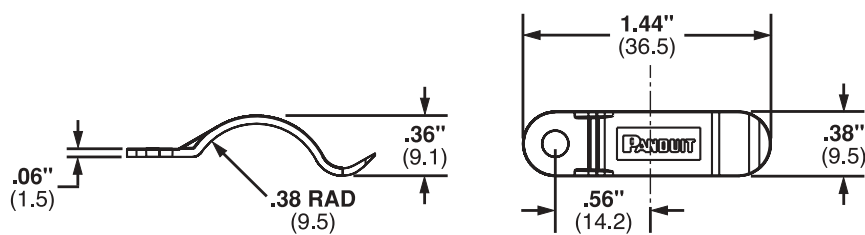
**Note:** All parts listed also available in black weather resistant material (-0). Bulk package only.



Part Number	Type Of Application	Max. Bundle Diameter mm	Width mm	Bundle Offset mm	Diameter mm	Material	Colour	Where Used	Mounting Method	Std. Pkg. Qty.	Std. Ctn. Qty.
		A	B	C	D						
CCS12-S8-C	Standard	3.1	9.4	8.4	4.2	Nylon 6.6	Natural	Indoors	M4 Screw	100	500
CCS19-S8-C		4.8	9.4	10.9	4.2					100	500
CCS25-S8-C		6.3	9.4	10.4	4.2					100	500
CCS25-S10-C		6.3	9.4	10.4	5.1				M5 Screw	100	500
CCS31-S8-C		7.9	9.4	12.4	4.2					100	500
CCS38-S8-C		9.5	9.4	14.5	4.2					M4 Screw	100
CCS44-S8-C		11.1	9.4	15.0	4.2				100		500
CCS50-S8-C		12.7	9.4	15.2	4.2				100		500
CCH12-S10-C		Heavy Duty	3.1	12.7	9.1				5.1	M5 Screw	100
CCH19-S10-C	4.8		12.7	10.7	5.1				100		500
CCH25-S10-C	6.3		12.7	11.7	5.1				100		500
CCH31-S10-C	7.9		12.7	12.7	5.1				100		500
CCH38-S10-C	9.5		12.7	13.5	5.1				100		500
CCH44-S10-C	11.1		12.7	14.2	5.1				100		500
CCH50-S10-C	12.7		12.7	15.0	5.1				100		500
CCH56-S10-C	14.2		12.7	15.5	5.1				100		500
CCH62-S10-C	15.7		12.7	16.5	5.1				100		500
CCH69-S10-C	17.5		12.7	19.1	5.1				100		500
CCH75-S10-C	19.1		12.7	19.8	5.1	100	500				
CCH81-S10-C	20.6		12.7	20.6	5.1	100	500				
CCH87-S10-C	22.1		12.7	21.3	5.1	100	500				
CCH100-S10-C	25.4		12.7	23.1	5.1	100	500				
CCH112-S10-C	28.4		12.7	24.6	5.1	100	500				
CCH119-S10-C	30.2	12.7	25.4	5.1	100	500					
CCH125-S10-C	31.8	12.7	26.9	5.1	100	500					
CCH138-S10-C	34.8	12.7	28.4	5.1	100	500					
CCH150-S10-C	38.1	12.7	30.2	5.1	100	500					

## Wire Retainers

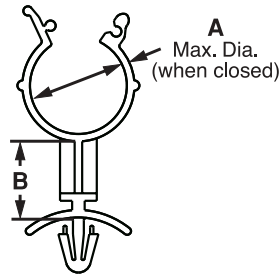
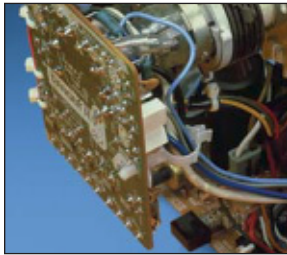
Wire slide into the clip and are held in place by tension.



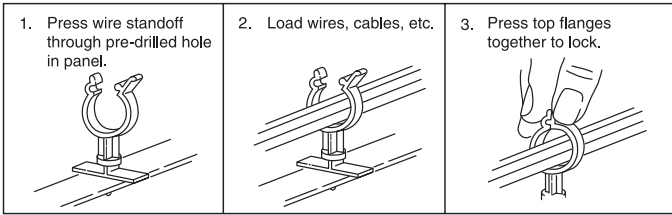
Part Number	Bundle Diameter mm	Dimensions mm	Material	Colour	Where Used	Mounting Method	Std. Pkg. Qty.	Std. Ctn. Qty.
TWR-C	9.5	See Drawing	Nylon 6.6	Natural	Indoors	M3 Screw	100	500
TWR-C0			Weather Resistant Nylon 6.6	Black	Indoors/Outdoors		100	500

### Wire Standoffs

For retaining wires, cables, components or tubing away from panel or conductive chassis. Finger grip flange can be easily locked or unlocked for revisions, Hand installed in pre-drilled hole.



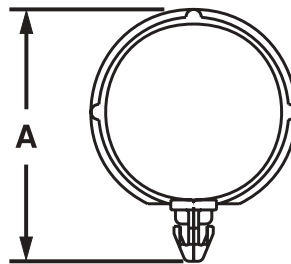
**Easy to install and use.**



Part Number	Max. Bundle Dia. mm	Standoff Height mm	Panel Dimensions mm		Material	Colour	Where Used	Mounting Method	Std. Pkg. Qty.	Std. Ctn. Qty.
	A	B	Panel Thickness	Hole Diameter						
WS25-25-C	6.4	6.4	2.0	4.7 - 4.9	Nylon 6.6	Natural	Indoors	Inserted into Pre-Drilled Hole	100	500
WS25-50-C	6.4	12.7	2.0	4.7 - 4.9					100	500
WS25-75-C	6.4	19.1	2.0	4.7 - 4.9					100	500
WS35-25-C	8.9	6.4	2.0	4.7 - 4.9					100	500
WS35-50-C	8.9	12.7	2.0	4.7 - 4.9					100	500
WS35-75-C	8.9	19.1	2.0	4.7 - 4.9					100	500
WS50-25-C	11.9	6.4	2.0	4.7 - 4.9					100	500
WS50-50-C	11.9	12.7	2.0	4.7 - 4.9					100	500
WS50-75-C	11.9	19.1	2.0	4.7 - 4.9					100	500
WS75-25-C	19.8	6.4	2.0	4.7 - 4.9					100	500
WS75-50-C	19.8	12.7	2.0	4.7 - 4.9					100	500
WS75-75-C	19.8	19.1	2.0	4.7 - 4.9					100	500

### Snap-In Clips

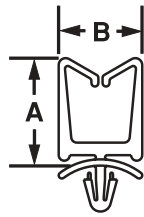
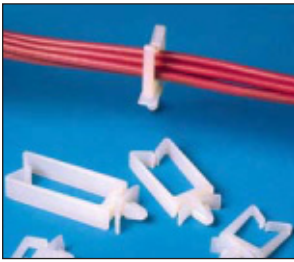
The clips hold wire bundles securely. Clips are placed on the bundle then attached to the panel. Designed for pre-drilled holes.



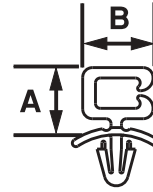
Part Number	Max. Bundle Diameter mm	Height mm	Material	Colour	Where Used	Panel Dimensions mm		Mounting Method	Std. Pkg. Qty.	Std. Ctn. Qty.
		A				Maximum Thickness	Hole Diameter			
SICH25-C	6.4	20.9	Nylon 6.6	Natural	Indoors	2.5	6.4	Inserted into Pre-Drilled Hole	100	500
SICH38-C	9.7	24.9							100	500
SICH50-C	12.7	28.2							100	500
SICH75-C	19.1	35.6							100	500
SICH100-C	25.4	41.9							100	500
SICH150-C	38.0	54.6							100	500

### Wire Saddles

Funnel entry design for fast insertion of wires and cables. Used in pre-drilled holes.



VWS Vertical



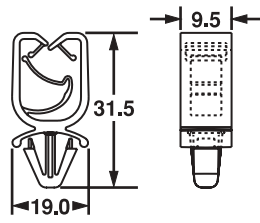
HWS Horizontal



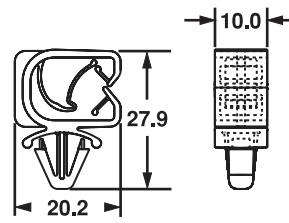
Part Number	Max. Bundle Capacity mm	Width mm		Height mm		Material	Colour	Where Used	Panel Dimensions mm		Mounting Method	Std. Pkg. Qty.	Std. Ctn. Qty.
		A	B	Panel Thickness	Hole Diameter								
VWS4218-C	5.0 x 11.0	15.2	14.7	Nylon 6.6	Natural	Indoors	0.8 - 2.0	4.7	Inserted into Pre-Drilled Hole	100	500		
VWS4238-C	10.0 x 11.0	15.2	19.8							100	500		
VWS4274-C	19.0 x 11.0	15.2	29.0							100	500		
VWS42105-C	27.0 x 11.0	15.2	36.8							100	1000		
HWS2819-C	5.0 x 11.0	11.2	10.7							100	500		

### Harness Clips

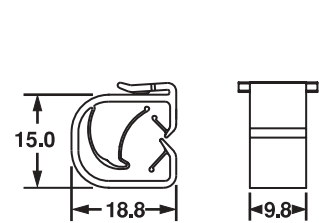
Integral "spring" holds wire bundles tightly. Used in pre-drilled holes. Vertical, horizontal, and edge mount versions available.



Vertical  
HCMP06B12



Horizontal  
HCMP06C12



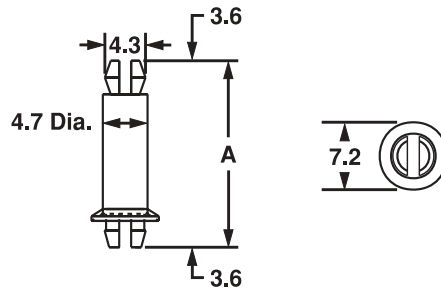
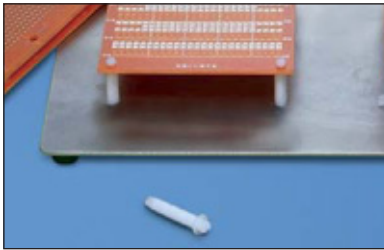
Edge Mount  
HCME06A12

Part Number	Max. Bundle Diameter mm	Dimensions mm	Material	Colour	Where Used	Panel Dimensions mm		Mounting Method	Std. Pkg. Qty.	Std. Ctn. Qty.
						Maximum Thickness	Hole Diameter			
HCMP06B12-C20	6.0 -12.0	See Drawing	Nylon	Black	Indoors	2.7	6.4	Inserted into Pre-Drilled Hole	100	500
HCMP06C12-C20									100	500
HCME06A12-C130			—			—	Acetal	See Drawing	100	500



### Circuit Board Posts

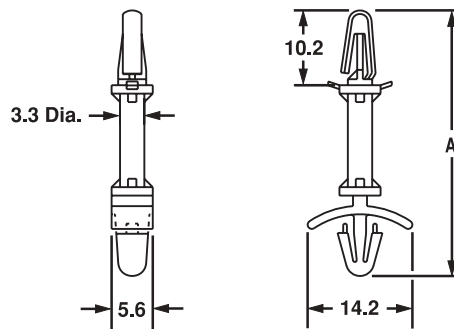
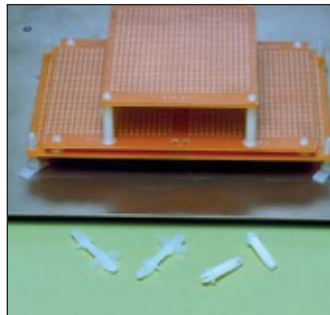
For board-to-board or board-to-chassis mounting. Posts snap into pre-drilled holes. Bell flange on bottom end provides greater stability.



Part Number	Standoff Height mm	Height mm	Material	Colour	Where Used	Mounting Method	Std. Pkg. Qty.	Std. Ctn. Qty.
		A						
CBP12-C	3.0	10.2	Nylon 6.6	Natural	Indoors	For Circuit Boards or Chassis: 1.5mm thick with 4.0mm diameter mounting holes	100	500
CBP25-C	6.4	13.5						
CBP31-C	7.9	15.0						
CBP37-C	9.4	15.7						
CBP50-C	12.7	19.8						
CBP62-C	15.7	23.0						
CBP75-C	19.1	26.2						
CBP87-C	22.1	29.2						
CBP100-C	25.4	32.5						

### Circuit Board Locking Supports

For board-to-chassis support. Snap-in design for fast assembly. Wing design on chassis mounting provides constant tension and stability.



Part Number	Standoff Height mm	Height mm	Material	Colour	Where Used	Mounting Method	Std. Pkg. Qty.	Std. Ctn. Qty.
		A						
CBLS18-C	4.7	23.4	Nylon 6.6	Natural	Indoors	For Circuit Boards: 1.5mm thick with 4.0mm diameter mounting holes	100	500
CBLS25-C	6.4	24.9						
CBLS37-C	9.5	28.2						
CBLS50-C	12.7	31.2				For Chassis: . 0.7mm to 2.0mm thick with 4.7mm to 4.9mm diameter mounting holes	100	1000
CBLS62-C	15.9	34.3						
CBLS75-C	19.1	37.5						

## General Introduction

*PANDUIT* adhesive mounts provide a quick, economical and dependable method of supporting, routing and protecting wires or cables. Some are used with *PANDUIT* cable ties and others can be used without cable ties. Adhesive backed mounts adhere to a variety of surfaces. This alternative to mechanical fasteners offers the advantage of lower installed cost with safe, easy to use, quality products.

## Applications

- To route wires in control panels and switchboards
- To support bundles of wires away from moving mechanical devices
- Routing and harnessing cables, both indoors and out, to prevent safety hazards
- To organise flat cables in many locations with low profile construction
- Ideal for supporting wire bundles where holes cannot be made in the substrate
- To separate groups of wires for identification



## Markets

- Original Equipment Manufacturers (OEM)
- Construction Industry
- Telecommunication Systems
- CATV
- Aerospace Industry
- Utilities
- Electronic Components
- Transportation Industry
- Appliance Manufacturers
- Maintenance and Repair Operations (MRO)



## General Mount Guidelines

*PANDUIT* pressure sensitive adhesive (foam tape) mounts are intended to secure wire bundles or other light objects to smooth surfaces. These mounts are not designed to support excessive loads and should not be used when the maximum expected load exceeds the rated capacity of the mount.

## Choosing the Right Adhesive

*PANDUIT* offers two standard pressure sensitive foam tapes which are available on most adhesive backed wiring accessories products. The general purpose tape is produced with a rubber based adhesive and is identified by an “-A” in the part number. This tape develops its strength extremely fast and can be used in environments with temperatures ranging from -29°C to + 49°C. It is recommended that rubber based adhesive mounts dwell 2 hours after installation, prior to loading. Rubber based adhesive tape is the best choice for most adhesive mount applications, including powder coated surfaces.

Acrylic based adhesive tape is also available and is identified by an “-AT” in the part number. This tape is for use in environments where continuous exposure to temperatures as high as 82°C is possible. Acrylic based adhesive develops its maximum strength over a longer period of time than rubber based adhesive. It is recommended that acrylic adhesive mounts dwell 8 hours after installation, prior to loading. Acrylic based adhesive tape is a good choice for environments with prolonged exposure to UV rays or temperatures above 49°C.

*PANDUIT* also offers a two-part epoxy for use in applications where excessive loading is required, or where the surface to which the mount must be applied is porous rather than smooth. This adhesive is formulated specifically for use on *PANDUIT* mounts, and is packaged in pre-measured cups to insure the proper ratio of resin and hardener are mixed, eliminating wasted epoxy.

### Application Chart

Since *PANDUIT* manufactures adhesive backed mounts with a variety of adhesive types, this chart should be used as a guideline for choosing the best adhesive for often-encountered conditions. Each type of adhesive is rated good, fair or poor for some specific mounting surfaces and/or chemical environments.

Surfaces	Rubber Based Foam Tape Mounts	Acrylic Based Foam Tape Mounts	Epoxy Applied Adhesive Mounts
Plastics	Good	Good	Good
Wood	Good	Good	Good
Glass	Fair	Good	Good
Painted Surfaces	Good	Good	Fair
Powder Coating	Good	Fair	Good
Metal	Good <sup>1</sup>	Good <sup>1</sup>	Good
Paper	Good	Good	Fair
Concrete, Stone, Masonry	Not Recommended	Not Recommended	Good
<b>Chemical Resistance</b>			
Water	Good	Good	Poor
Oil	Poor	Fair <sup>3</sup>	Good
Gasoline	Poor	Fair <sup>3</sup>	Fair
Dilute Acids	Poor	Fair <sup>3</sup>	Fair
Dilute Alkalis	Good	Fair <sup>3</sup>	Fair
Organic Solvents	Poor	Fair <sup>3</sup>	Not Recommended
Outdoor Exposure	Not Recommended	Good	Good <sup>2</sup>

### Mount Spacing

To determine the number of mounts to use in a given application, the following formula can be used as a guideline:

$$\frac{\text{Cable or weight (Kg./m)}}{\text{Static Load rating of Mount (Kg./m)}} = \text{Spacing} \frac{\text{Mounts}}{\text{m}}$$

1. Not recommended for use on copper or brass.
2. Mounts manufactured from outdoor material only. For specific applications, individual testing prior to extensive use is suggested.
3. Depends on concentration, exposure time and chemical composition.

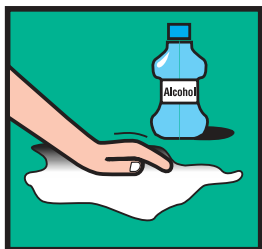
### Surface Preparation

For best results, *PANDUIT* adhesive mounts should be applied to clean, dry, grease-free surfaces. We recommend that the surface be cleaned prior to mount installation. For rubber and acrylic based foam tape adhesives, a blend of isopropyl alcohol and water 50/50 may be used to clean most surfaces.

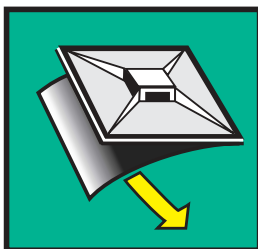
For epoxy type adhesives, especially masonry surfaces, be sure to clean all loose particles away before mount installation. Some surface abrasion is recommended to achieve maximum strength. A light rubbing with medium grit emery cloth or sandpaper is best. Wash after abrading.

### Proper Installation Techniques For Pressure Sensitive Adhesive Mounts

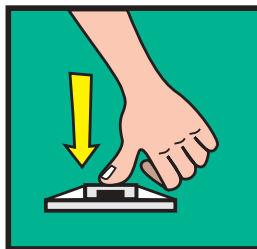
For proper installation of adhesive mounts with foam tape, simply remove the release liner and place the mount in the desired location. Avoid touching the adhesive prior to positioning the mount. Apply firm pressure to the mount for 5 seconds to insure proper adhesion.



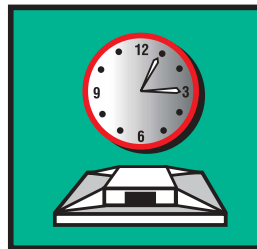
Clean surface with a clean cloth and isopropyl alcohol. Allow surface to air dry.



Remove the release liner, being careful not to touch the adhesive.



Apply full thumb pressure for at least 5 seconds.



Allow mount to properly dwell.

### Epoxy Adhesive Mounts

*PANDUIT* EMA adhesive is a two-part epoxy cement which is packaged in convenient mixer cups containing an equal amount of resin and hardener. Peel the protective covering off and pop the center of the cup in to form a mixing bowl. Each cup is supplied with a mixer stick and contains enough epoxy to properly apply three EMS mounts. The resin and hardener should be thoroughly mixed together until the epoxy is a consistent and uniform colour. The mixer stick can then be used to apply the adhesive to the mount. The epoxy should be forced into the grooves on the bottom of the mount to obtain optimum bond performance. The mount should be applied to the surface with light pressure and a back-and-forth twisting motion. Hardening of the epoxy begins five minutes after mixing at room temperature.

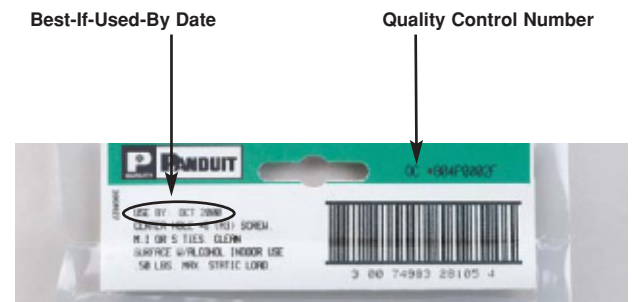
## Proper Storage Conditions

All *PANDUIT* adhesive products have an expiration date printed on the package label. Use the following storage guidelines:

1. For rubber and acrylic based foam tape adhesives, store in temperatures of 21°C and 45% Relative Humidity (R.H.).
2. For epoxy type adhesives, store in temperatures of 4°C to 25°C and relative humidity not in excess of 45%. Storage in opened containers is not recommended. Using the guidelines above, the shelf life of foam tape is 3 years. Shelf life of epoxy is 1 year. Deviation from the recommended storage conditions may reduce the shelf life or adhesive strength. In any case, adhesive products should never be stored near heating vents or other heat sources, and storage in lower temperatures than those recommended may increase the shelf life.

## Stock Rotation

Adhesive mount inventory should be rotated in order to insure the quality of the adhesive foam tape. Each package of *PANDUIT* adhesive backed mounts has a Quality Control Number and a best-if-used-by date on the package label. The best-if-used-by date provides the customer with an accurate way to control the rotation of inventory, and, as is the case with all *PANDUIT* products, the Quality Control Number provides complete traceability for all components that go into a specific production run of product.



## Mount Removal

There is no simple or easy method for removing *PANDUIT* adhesives. A thin wire or razor blade can be moved in between the surfaces when removing foam tape mounts; however, the adhesive residue will remain on the surface. Epoxy adhesives may be removed with a commercial paint stripping solution.

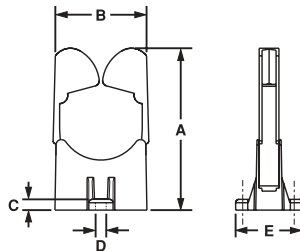
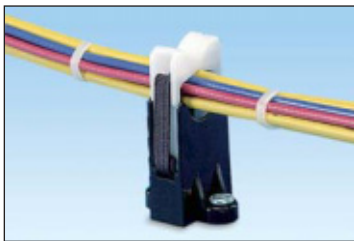
## Harness Board Accessories

PANDUIT harness board accessories provide fast routing and forming of wires in harness fabrication. They hold the wires off the harness board at a uniform height for easy application of cable ties. The accessories are designed for use with various PANDUIT cable tie installation tools. The Low accessories are used with hand-operated tools. The High accessories are used with the automatic tools. To maintain the harness at a uniform height of approx. 33.8mm (at the centre of the harness) above the board, use RER Elastic Retainers, BR.75-E6 or BR.5-E6, CPH.75-S8, TJF and SHH1-S8 or SHH3-S8 harness board accessories. This height is suitable for use with PAT1M Automatic Cable Tie Installation Tool.



### Wire Retainers — RER Type Replaceable Elastic Retainers

As wires are individually inserted, the bundle is formed. When harness is complete, it can be easily snapped out. Three sizes available for 12.7mm, 19.0mm and 31.8mm bundles.



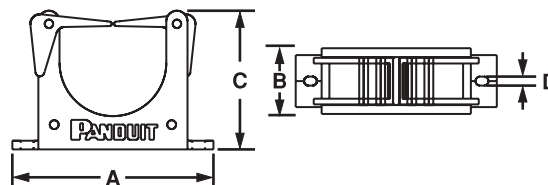
**Replacement Elastic**  
For economy, the elastic band can be replaced in the RER Elastic Retainers without removing the RER base.

Part Number	Pkg. Qty.
RER.5E-X	10
RER.75E-X	10
RER1.25E-X	10

Part Number	Max. Bundle Diameter mm	Length mm			Width mm			Height mm			Diameter mm	Hole Spacing mm	Colour and Material	Mounting Method	Std. Pkg. Qty.	Std. Ctn. Qty.
		A	B	C	D	E										
RER.5-S6-X	12.7	30.0	21.3	48.0	3.6	21.0	Black Nylon 6.6 and White Acetal	2 M3 Screw	10	50						
RER.75-S6-X	19.0	30.0	28.4	56.1	3.6	21.0			10	50						
RER1.25-S6-X	31.8	30.0	41.7	72.6	3.6	21.0			10	50						

### ER Type Elastic Retainers

ER Type retainers form wire bundles as wires are inserted. Completed bundles then snap out. Two sizes available for 12.7mm and 31.8mm bundles.

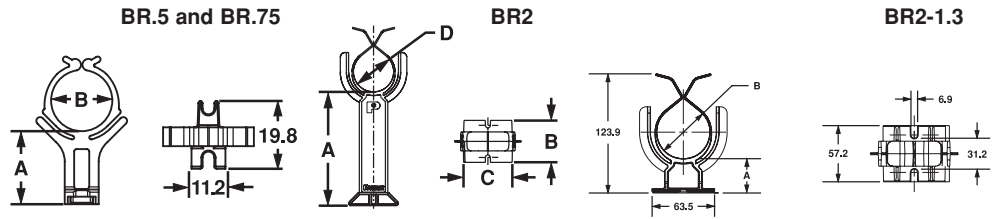


Part Number	Max. Bundle Diameter mm	Length mm			Width mm			Diameter mm	Colour and Material	Mounting Method	Std. Pkg. Qty.	Std. Ctn. Qty.
		A	B	C	D							
ER.5-E4-X	12.7	49.8	14.2	25.4	3.3	Black Nylon 6.6 and ABS	3.3	2 M2.5 Screw	10	100		
ER1.25-E4-X	31.8	73.7	24.08	50.8	3.3				10	100		



**Bundle Retainer**

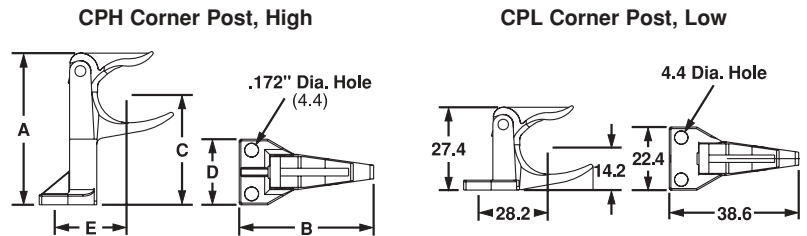
Spring fingers with large lead in facilitate fast routing of wires and easy removal of completed harness. Overlapping feet on the BR.5 and BR.75 allow the retainers to be butted together for wire breakouts. Three sizes available for 12.7mm,19.0mm and 50.8mm bundles.



Part Number	Standoff Height mm	Max. Bundle Diameter mm	Colour	Material	Screw Size Metric	Std. Pkg. Qty.	Std. Ctn. Qty.
	A	B					
BR.5-E6-C	26.7	12.7	Black	Rubber Modified Nylon 6.6	2 M3 Screws	100	500
BR.75-E6-C	23.9	19.0				100	500
BR2-1.3-X	33.5	50.8			2 M6 Screws	1	10
BR2-1.3-A-X	34.3	50.8			—	10	100
BR2-1.5-X	40.4	50.8			2 M6 Screws	10	0
BR2-4-X	103.1	50.8				10	0
BR2-6-X	152.9	50.8				10	0
			10	0			

**Corner Posts**

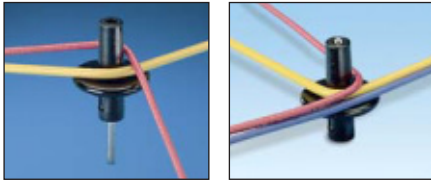
Designed to pre-form tight bundles at harness corners and breakouts. The top arm pivots for easy removal of completed harness.



Part Number	Max. Bundle Diameter mm	Dimensions mm	Colour	Material	Mounting Method	Std. Pkg. Qty.	Std. Ctn. Qty.
CPH.75-S8-X	19.0	See Drawing	Black	Nylon 6.6	2 M4 Screws	10	100
CPL.75-S8-X						10	100

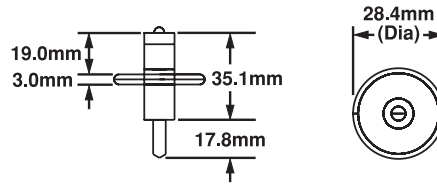
**T-Junction Fixture**

Using an integrated harness board nail, the T-Junction Fixture moves to form harnesses. When the harness is complete, the fixture can be pushed down for easy harness removal.



In the "up" position to form harness.

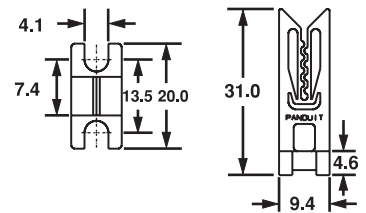
In the "down" position to tie and remove harness.



Part Number	Max. Bundle Diameter mm	Dimensions mm	Colour	Material	Mounting Method	Std. Pkg. Qty.	Std. Ctn. Qty.
TJF-X	34.0	See Drawing	Black	Nickel Plated Steel and Nylon 6.6	Nail	10	100

**Wire End Holder**

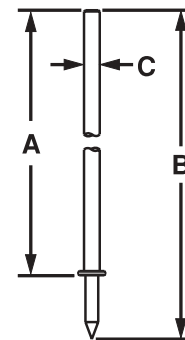
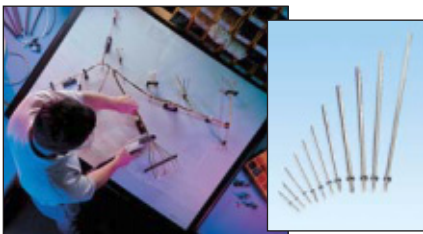
Secures wire ends with or without terminations while harness is being fabricated. Wires can be easily added or removed from the top, but will hold the wire from axial movement. Used with 0.3mm thru 1.5mm wires.



Part Number	Dimensions mm	Colour	Material	Mounting Method	Std. Pkg. Qty.	Std. Ctn. Qty.
WEH-E8-C	See Drawing	Black	Acetal	M4 Screw	100	1000

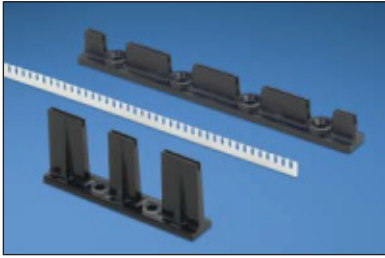
**Harness Board Nails**

Speeds routing of wires. All of the nails have a uniform driving depth insured by a collar stop. Smooth finish on the nails, will not abrade wire jackets.



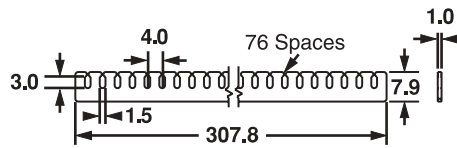
Part Number	Length mm	Overall Length mm	Thickness mm	Material	Mounting Method	Std. Pkg. Qty.	Std. Ctn. Qty.
	A	B	C				
HBN.75-T	19.1	34.8	1.9	Nickel Plated Steel	Hammered into Harness Board	200	1000
HBN1-T	25.4	41.1	1.9			200	1000
HBN1.5-T	38.1	53.8	2.1			200	1000
HBN2-T	50.8	66.5	2.4			200	1000
HBN2.5-T	63.5	79.2	2.8			200	1000
HBN3-T	76.2	91.9	3.0			200	1000
HBN4-T	101.6	117.3	3.7			200	1000

### Fanning Strip System



Assures that wires are held in a particular orientation in sophisticated wiring harnesses. Consists of fanning strip and fanning strip holder.

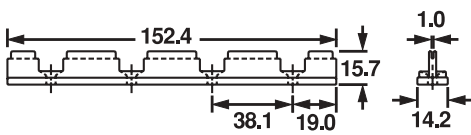
#### Fanning Strip (FS156)



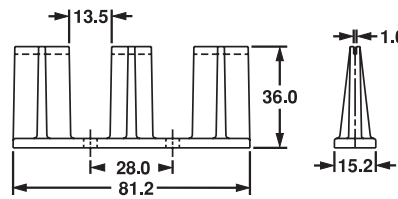
Contains evenly spaced “snap slots” to hold wires in place. No sharp edges to damage wire insulation. Becomes part of the wiring harness. Will accept wires up to 1.0mm. Used with FSH40 or FSHH holders.

### Fanning Strip System

#### Low Holder (FSH40-X)



#### High Holder (FSHH)

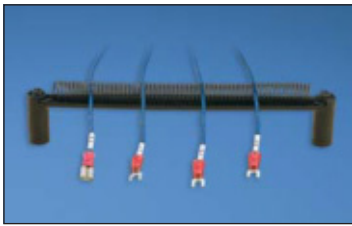


Used in conjunction with RER.75-S6, BR.75-E6, BR.5-E6 and CPH.75-S8. Ideal for use with PAT cable tie tool.

Part Number	Dimensions mm	Colour	Material	Mounting Method	Std. Pkg. Qty.	Std. Ctn. Qty.
FS156-C	See Drawing	Natural	Nylon 6.6	Fanning Strip Holder	100	1000
FSH40-X		Black	ABS	M4 Screw	10	100
FSHH-X		Black	ABS	M4 Screw	10	100

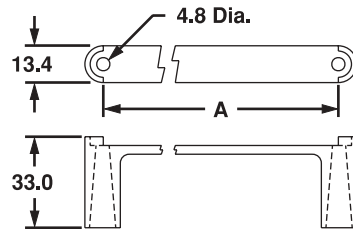
### Spring Wire Breakout System

Separates and holds wires in a harness while the rest of the harness is being formed. The wires simply pull out from the spring when the harness is complete.

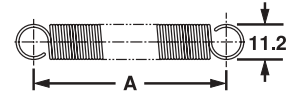


#### SHH Spring Holder

Each SHH Spring Holder is supplied with 1 rigid wire piece to hold the spring laterally and two M4 50.8mm hex head wood screws. Two sizes available for use with PBSC1 and PBSC6.



#### PBSC Spring Wire Breakout

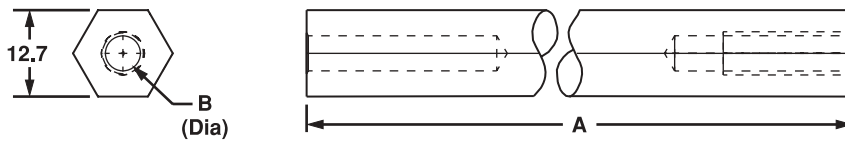


Part Number	Hole Spacing	Material	Colour	Mounting Method	Std. Pkg. Qty.	Std. Ctn. Qty.
	A					
PBSC1-X	25.4	Steel	—	SHH1 Spring Holder	10	100
PBSC3-X	76.2			2 M4 Screws	10	100
PBSC6-X	152.4			SHH3 Spring Holder	10	100
PBSC12-X	304.8			2 M4 Screws used with PBSC1	10	100
SHH1-S8-X	45.7	Nylon 6.6	Black	(2) M4 Screws	10	100
SHH3-S8-X	172.7			2 M4 Screws used with PBSC3 or OBSC6	10	100

### Harness Board Standoff Posts



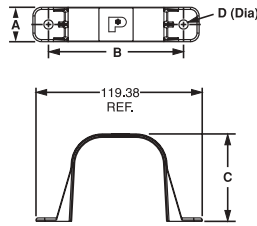
Used to hold a push mount accessories or a push mount cable tie at a specific location on a harness board. The Standoff Post is placed over a hole in the harness board, a bolt is then threaded into the bottom of the standoff from the backside of the board and tightened. Push mount accessories are inserted into the top of the Standoff Post prior to assembly. When the assembly is complete, the harness and the attached push mount are removed from the Standoff Post.



Part Number	Height A	Hole Diameter B	For Use With	Material	Mounting Method	Std. Pkg. Qty.	Std. Ctn. Qty.
HB2SP19-X	50.8	5.1	PLWP, PRWP, WS, VWS, HWS	Aluminium	M6 Screw	10	100
HB2SP25-X	101.6	7.5	PLWP, PRWP, PLP, THMS, HCMP, PMCC			10	100

### Wire Bundle Strap

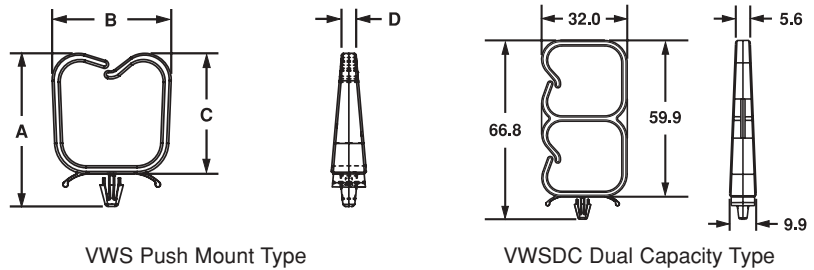
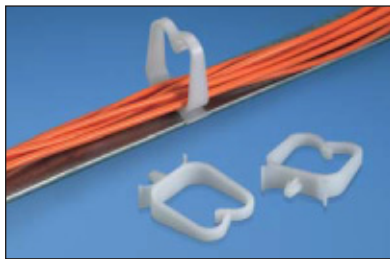
Wire Bundle Strap provides a quick, durable and inexpensive way to contain wire, cable and tubing. It can be installed on wood, plywood, masonry and other surfaces using standard fasteners.



Part Number	Bundle Retaining Area	Material	Colour	Dimensions mm				Mounting Method	Std. Pkg. Qty.
				A	B	C	D		
WBS6-Q	—	ABS	White	25.4	99.6	64.5	6.35	M6 Screw	25

### Optical Fibre Network Saddles

The product is designed with rounded edges for routing fibre optic cables. This feature provides a very smooth surface to eliminate the potential for snagging and putting stress on the fibre optic cable.



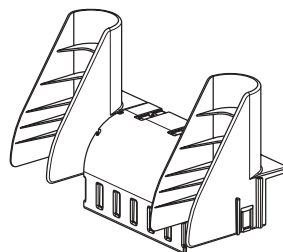
VWS Push Mount Type

VWSDC Dual Capacity Type

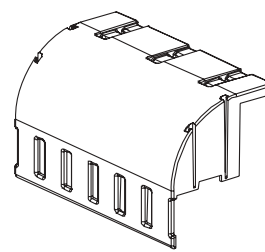
Part Number	Max. Bundle Diameter mm	Dimensions mm	Material	Colour	Where Used	Panel Dimensions mm		Mounting Method	Std. Pkg. Qty.	Std. Ctn. Qty.
						Max. Thickness	Hole Diameter			
VWS106-C	26.9	See Drawing	Nylon 6.6	Natural	Indoors	2.3	4.7	Push Mount	100	500
VWS106-C20				Black						
VWSDC-C				Natural						

### Waterfall Accessories

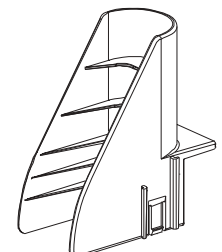
PANDUIT Waterfall Accessory provides bend radius control in both vertical and horizontal directions when transferring cables from standard ladder rack. Installs easily to the rung or a stringer of the ladder rack with PANDUIT PLT series cable ties, provided in every package. PANDUIT Waterfall Accessories are part of a complete cable management system.



CMW-Kit



CMWB- Waterfall Base



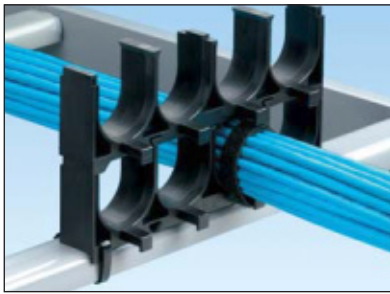
CMWW-Waterfall Wing

Part Number	Bend Radius Limit mm	Material	Colour	Width mm	Height mm	Included in Package	Std. Pkg. Qty.	Std. Ctn. Qty.
CMW-KIT	—	Glass Filled Flame Retardant Nylon 6.6	Black	243.8	124.5	One Base, Two Wings, and Three Cable Ties	1	10
CMW-KIT10			Natural					
CMWB	44.45		Black	133.1	—	One Base and Three Cable Ties	1	10
CMWB10			Natural					
CMWW	25.4		Black	50.6	124.5	One Bend Radius Control Wing	1	10
CMWW10			Natural					

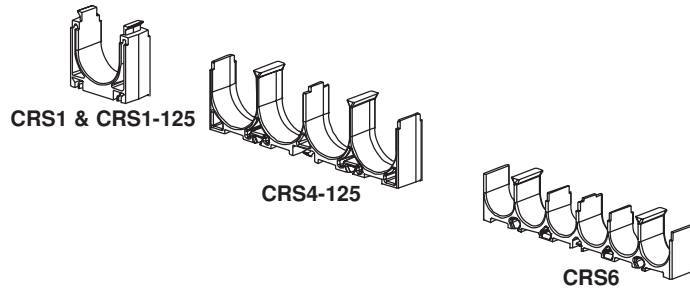
Order the number of pieces in multiples of standard package quantities.



**Stackable Cable Rack Spacers**



*PANDUIT* Stackable Cable Rack Spacers separate and support cable on standard ladder racks. This product prevents pinch points between the bottom row of cable and the ladder rack rung as a result of the weight of multiple cable layers applied on top of each other. Maximise rack space by stacking products for maximum cable capacity.

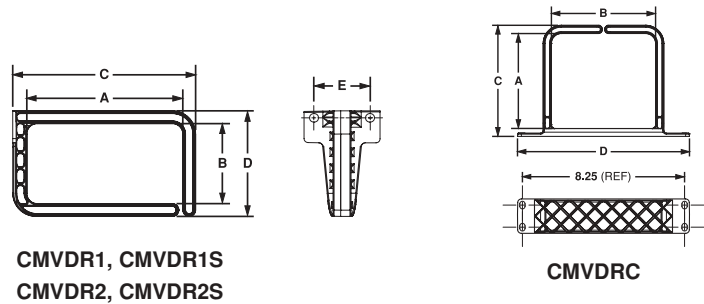


Part Number	Cable Bundles	Bundle Diameter mm	Material	Colour	Mounting Method	Width mm	Stack Height mm	Std. Pkg. Qty.	Std. Ctn. Qty.
CRS4-125-X	4	31.75	Flame Retardant Nylon 6.6	Black	Standard Cross Section and HLM	133.1	36.07	10	100
CRS1-125-X	1					39.4		10	100
CRS6-X	6	20.32	Polycarbonate / ABS Blend			133.4	25.4	10	100
CRS1-X	1					28.58		10	100

**Vertical D-Rings**



The *PANDUIT* Vertical D-Ring provides open access cable management. The front arm of the D-Ring rotates 90° to allow entire cable bundles to be inserted. Screw holes are spaced according to EIA standards and allow for installation on standard equipment racks.



Part Number	Dimensions mm					Material	Colour	Mounting Method	Std. Pkg. Qty.	Std. Ctn. Qty.
	A	B	C	D	E					
CMVDR1	121.9	30.0	145.2	52.07	44.45	Flame Retardant Polycarbonate	Black	(2) M6 Screws	1	10
CMVDR1S	60.9		82.8						1	10
CMVDR2	121.9	60.9	145.2	83.82					1	10
CMVDR2S	60.9		82.8						1	10
CMVDRC	119.88	129.29	143.64	222.25	28.58				1	10

**Threaded Rod Cover**



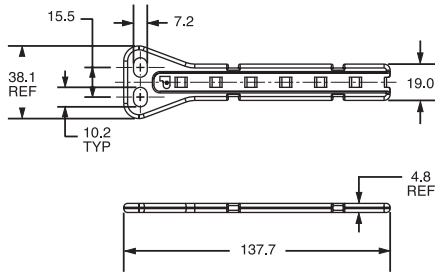
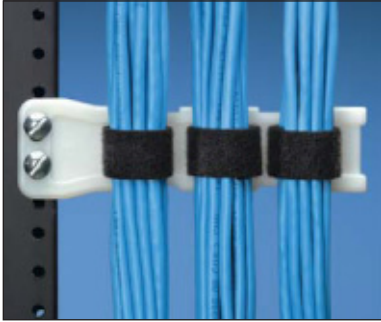
*PANDUIT* Threaded Rod Cover protects cables from abrasion caused by contact with threaded rod.

- Manufactured from material that meets UL94V-0 specifications
- Soft material for easy installation
- Available in 457mm lengths

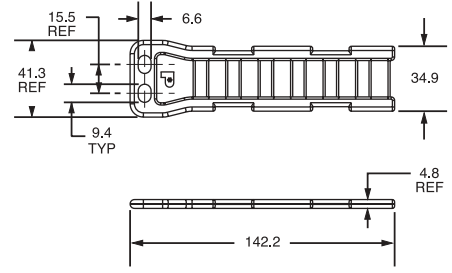
Part Number	For Threaded Rod Size mm	Material	Colour	Std. Pkg. Qty.	Std. Ctn. Qty.
TRC18FR-X8	12.7 to 15.88	Weather Resistant Polyethylene	Grey	10	100

**Flat PAN-POST™ Standoff**

Used to secure cable in vertical or horizontal configurations. Mounting hole configuration meets EIA/TIA specifications for use on racks or in enclosures.



**PPF2S**



**PPF2SV**

Part Number	Used with Cable Ties**	Dimensions mm	Colour	Material	Mounting Method	Std. Pkg. Qty.	Std. Ctn. Qty.
PPF2SV-S25-V	M, I, S	See Drawing	Natural	Nylon 6.6	2 M6 Screws	5	100
PPF2SV-S25-V69				Flame Retardant Nylon 6.6		5	100
PPF2S-S25-V	M, I, S, HS, LH, H and Hook & Loop ties			Nylon 6.6		5	100
PPF2S-S25-V69				Flame Retardant Nylon 6.6		5	100

\*\*Cable tie Cross Section Sizes: M = Miniature, I = Intermediate, S = Standard, LH = Light-Heavy, H = Heavy and with all Hook & Loop ties found on page 36.

**Communication Cable Management Kit for Cabinets**

Kit of wire management accessories specifically designed for use in a network cabinet or enclosure.



Kit includes the following:

- TAK-TY™ Hook & Loop cable tie (HLM-15R0) / 1 roll
- Nylon Cable tie (ILT3S) / 24 pieces
- Adhesive backed mounts (ABM3H-A and ABM112-A) 6 pieces each
- Flat Post Standoff (PPF2S-S25) / 8 pieces
- Push mount (PWMS-H25) / 6 pieces
- Vertical wire saddle (VWS106) / 4 pieces

Part Number	Std. Pkg. Qty.	Std. Ctn. Qty.
CCMKIT1	1	100