

CamdenBoss Components

- PCB Terminal Blocks
- Interconnection
- Fuses & Fuseholders
- LED's and Indicators
- Miniature Switches
- Limit & Safety Switches
- Control Products
- Interface Modules & Supports
- Relay Bases
- Enclosures
- Batteries
- Transformers

CAMDENBOSS
ELECTRONICS & ENCLOSURES

LIMIT & SAFETY SWITCHES

LIMIT SWITCHES

30mm Wide, Metal IP66 and Plastic IP65
 40mm Wide, Metal IP66 and Plastic IP65
 50mm Wide, Plastic IP65
 50mm Wide, Metal IP66
 60mm Wide, Metal IP66
 30mm Wide, Pre-Wired IP67
 35mm Wide, Pre-Wired IP67

CE10 p143
 CE41 p144
 CE20 p145
 CE21 p146
 CE31 p147
 CE70 p148
 CE60 p149

CONTROL
PRODUCTSINTERFACE
MODULES &
SUPPORTS

SAFETY SWITCHES

30mm Polymeric Casing 1 cable Inlet IP65

90° Adjustable Head, Key Operated
 Zinc Plated Shaft
 Pull Wire Without Reset for Simple Stop

CE10.00.S5P p150
 CE10.00.SCP p150
 CE10.00.TB p150
 CE10.00.S5M p150
 CE10.00.SCM p150
 CE10.00.TM p150

30mm Metal Casing 1 cable Inlet IP66

90° Adjustable Head, Key Operated
 Zinc Plated Shaft

CE10.00.S5M p150
 CE10.00.SCM p150
 CE10.00.TM p150

40mm Polymeric Casing 1 cable Inlet IP65
 40mm Metal Casing 1 cable Inlet IP66

90° Adjustable Head, Key Operated
 Pull Wire Without Reset for Simple Stop

CE41.00.S5P p151
 CE41.00.S5M p151
 CE41.00.TM p151

50mm Polymeric Casing 3 cable Inlet IP65

90° Adjustable Head, Key Operated
 Zinc Plated Shaft

CE20.00.S5P p151
 CE20.00.SCP p151

50mm Metal Casing 3 cable Inlet IP66

Pull Wire Without Reset for Simple Stop
 90° Adjustable Head, Key Operated
 Zinc Plated Shaft

CE20.00.TB p151
 CE21.00.S5M p151
 CE21.00.SCM p151

60mm Metal Casing 1 cable Inlet IP66

Pull Wire Without Reset for Simple Stop
 90° Adjustable Head, Key Operated
 Pull Wire Without Reset for Simple Stop

CE21.00.TM p151
 CE31.00.S5M p151
 CE31.00.TM p151

RELAY
BASES


ENCLOSURES

BATTERIES

TRANS-
FORMERS

LIMIT & SAFETY SWITCHES

30mm Wide Limit Switches

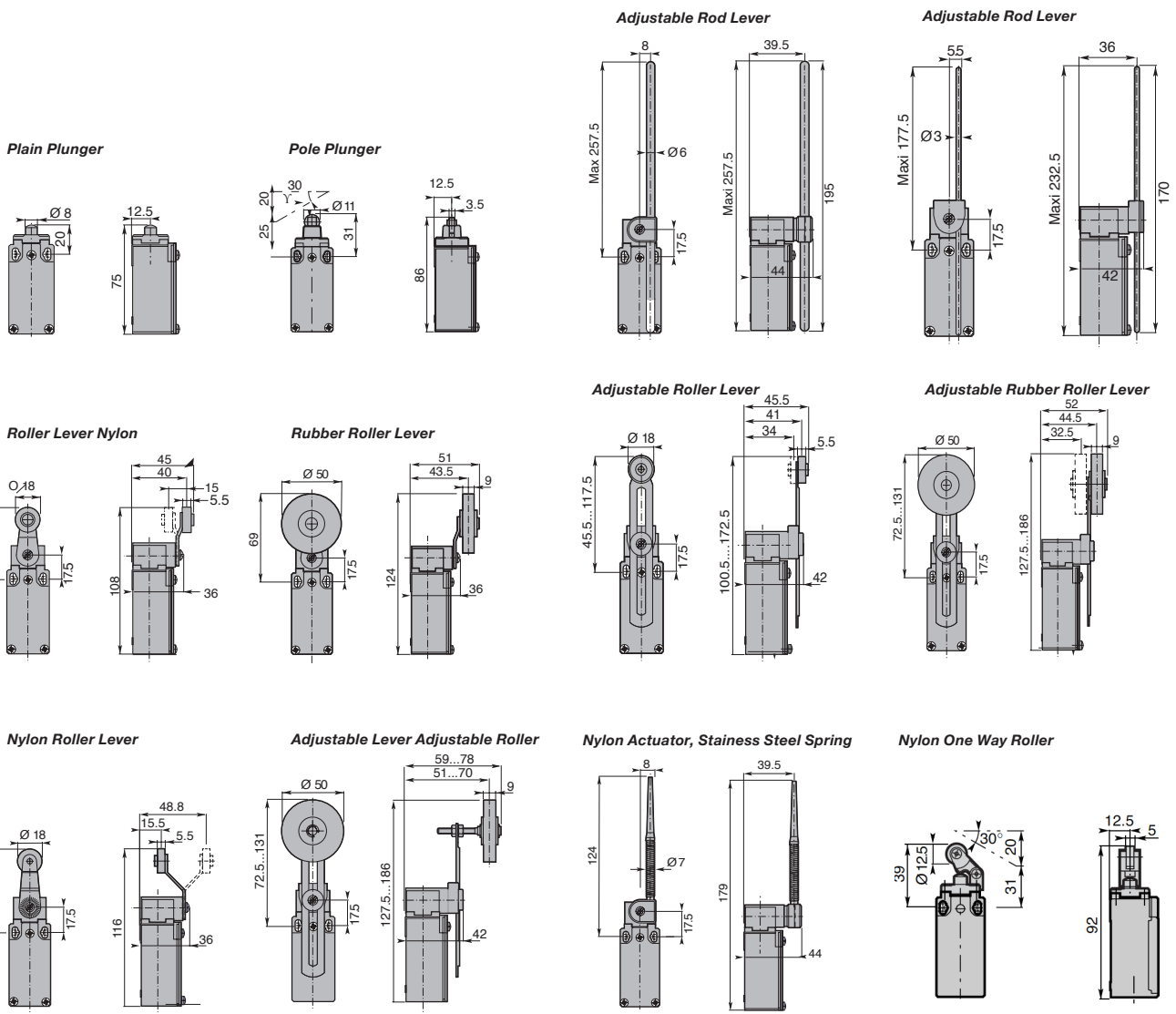
- 30mm width
- Double insulated plastic to IP65
- Metal casing to IP66
- Snap action contacts
-  approved



SPECIFICATION

Rating	500V
Shock withstand	50g
Impulse withstand voltage	6kV
Working temperature	-25°C to +70°C
Switching frequency	3600 cycles/h
Load factor	0,5
Short circuit protection	10A gG fuse

IP66 METAL CASING	IP65 PLASTIC CASING	IP65 METAL HEAD PLASTIC CASING	PLUNGER TYPE	MAX ACTUATION SPEED	ACTUATION/ NC OPERATION
CE10.00.AM	CE10.00.AP	CE10.00.AI	Plain Plunger	0.5ms ⁻¹	15N/30N
CE10.00.BM	CE10.00.BP	CE10.00.BI	Roller Plunger	0.3ms ⁻¹	12N/30N
CE10.00.GM	CE10.00.GP	CE10.00.GI	Adjustable Rod Lever	1.5ms ⁻¹	0.10Nm/0.32Nm
CE10.00.HM	CE10.00.HP	CE10.00.HI	Adjustable Rod Lever	1.3ms ⁻¹	0.10Nm/0.32Nm
CE10.00.EM	CE10.00.EP	CE10.00.EI	Roller Lever Nylon	1.5ms ⁻¹	0.10Nm/0.32Nm
CE10.00.EM/50	CE10.00.EP/50	CE10.00.EI/50	Rubber Roller Lever	1.5ms ⁻¹	0.10Nm/0.32Nm
CE10.00.FM	CE10.00.FP	CE10.00.FI	Adjustable Roller Lever	1.5ms ⁻¹	0.10Nm/0.32Nm
CE10.00.FM/50	CE10.00.FP/50	CE10.00.FI/50	Adjustable Rubber Roller Lever	1.5ms ⁻¹	0.10Nm/0.32Nm
CE10.00.IM	CE10.00.IP	CE10.00.II	Nylon Roller Lever	1.5ms ⁻¹	0.10Nm/0.32Nm
CE10.00.FRM/50	CE10.00.FRP/50	CE10.00.FRI/50	Adjustable Lever Adjustable Roller	1.5ms ⁻¹	0.10Nm/-
CE10.00.HTM	CE10.00.HLP	CE10.00.HLI	Nylon Actuator, Stainless Steel Spring	1.5ms ⁻¹	0.10Nm/0.32Nm
CE10.00.KM	CE10.00.KP	CE10.00.KI	Nylon One Way Roller, Steel Plunger	1.5ms ⁻¹	0.10Nm/0.32Nm
CE10.00.KMN	CE10.00.KPN	CE10.00.KIN	Nylon One Way Roller, Nylon Plunger	1.5ms ⁻¹	0.10Nm/0.32Nm



PCB TERMINAL BLOCKS

INTER-CONNECTION

FUSES & FUSE-HOLDERS

LEDs & INDICATORS

MINIATURE SWITCHES

LIMIT & SAFETY SWITCHES

CONTROL PRODUCTS

INTERFACE MODULES & SUPPORTS

RELAY BASES

ENCLOSURES

BATTERIES

TRANSFORMERS

LIMIT & SAFETY SWITCHES

40mm Wide Limit Switches

- 40mm width
- IP65 double insulated plastic
- IP66 metal casing
- Snap action contacts
- approved

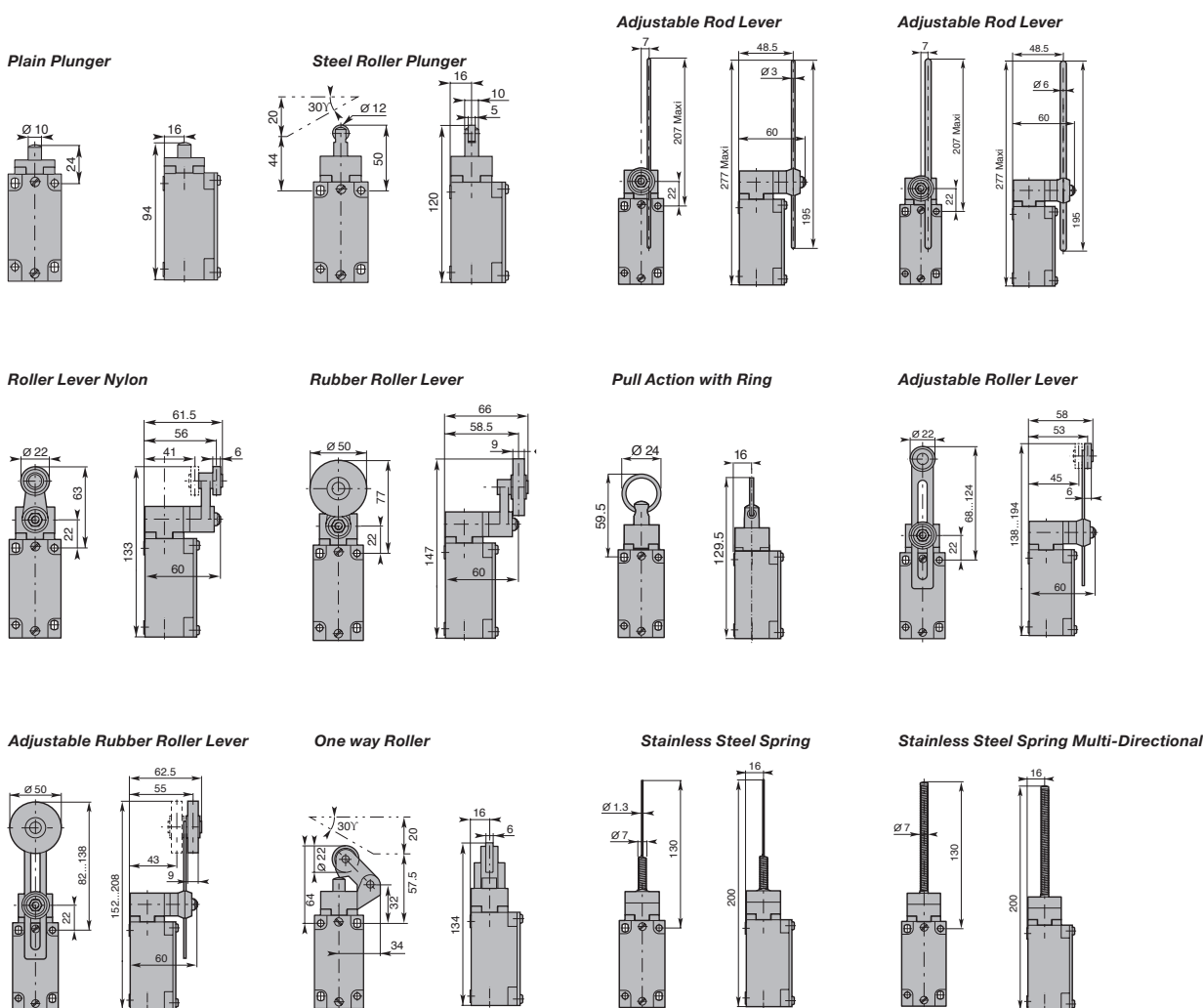
CE 41



SPECIFICATION

Rating	500V
Shock withstand	50g
Impulse withstand voltage	6kV
Working temperature	-25°C to +70°C
Switching frequency	3600 cycles/h
Load factor	0.5
Short circuit protection	10A gG fuse

IP66 METAL CASING	IP65 PLASTIC CASING	PLUNGER TYPE	MAX ACTUATION SPEED	ACTUATION/ NC OPERATION
CE41.00.AM	CE41.00.AP	Plain Plunger	0.5ms ⁻¹	30N/45N
CE41.00.BM	CE41.00.BP	Steel Roller Plunger	0.3ms ⁻¹	22N/40N
CE41.00.HM	CE41.00.HP	Adjustable Rod Lever	1.5ms ⁻¹	0.15Nm/0.30Nm
CE41.00.GM	CE41.00.GP	Adjustable Rod Lever	1.3ms ⁻¹	0.15Nm/0.30Nm
CE41.00.EM	CE41.00.EP	Roller Lever Nylon	1.5ms ⁻¹	0.15Nm/0.30Nm
CE41.00.EM/50	CE41.00.EP/50	Rubber Roller Lever	1.5ms ⁻¹	0.15Nm/0.30Nm
CE41.00.TM	CE41.00.TP	Pull Action with Ring	0.5ms ⁻¹	25N/-
CE41.00.FM	CE41.00.FP	Adjustable Roller Lever	1.5ms ⁻¹	0.15Nm/0.30Nm
CE41.00.FM/50	CE41.00.FP/50	Adjustable Rubber Roller Lever	1.5ms ⁻¹	0.15Nm/0.30Nm
CE41.00.KM	CE41.00.KP	One way Roller	1.5ms ⁻¹	12N/40N
CE41.00.LSM	CE41.00.LSP	Stainless Steel Spring	1.0ms ⁻¹	0.18Nm/-
CE41.00.LM	CE41.00.LP	Stainless Steel Spring Multi-Directional	1.0ms ⁻¹	0.18Nm/-



+44 (0)1638 716101
 info@camdenboss.com
 www.camdenboss.com

We operate a constant improvement policy, our products are subject to change without notice.

Ver 1.1



PCB
TERMINAL
BLOCKS

INTER-
CONNECTION

FUSES &
FUSE-
HOLDERS

LEDs &
INDICATORS

MINIATURE
SWITCHES

LIMIT &
SAFETY
SWITCHES

CONTROL
PRODUCTS

INTERFACE
MODULES &
SUPPORTS

RELAY
BASES

ENCLOSURES

BATTERIES

TRANS-
FORMERS

LIMIT & SAFETY SWITCHES

50mm Wide IP65 Limit Switches

- 50mm width
- IP65 double insulated plastic
- Snap action contacts
- Other types available
- CE, UL, VDE approved

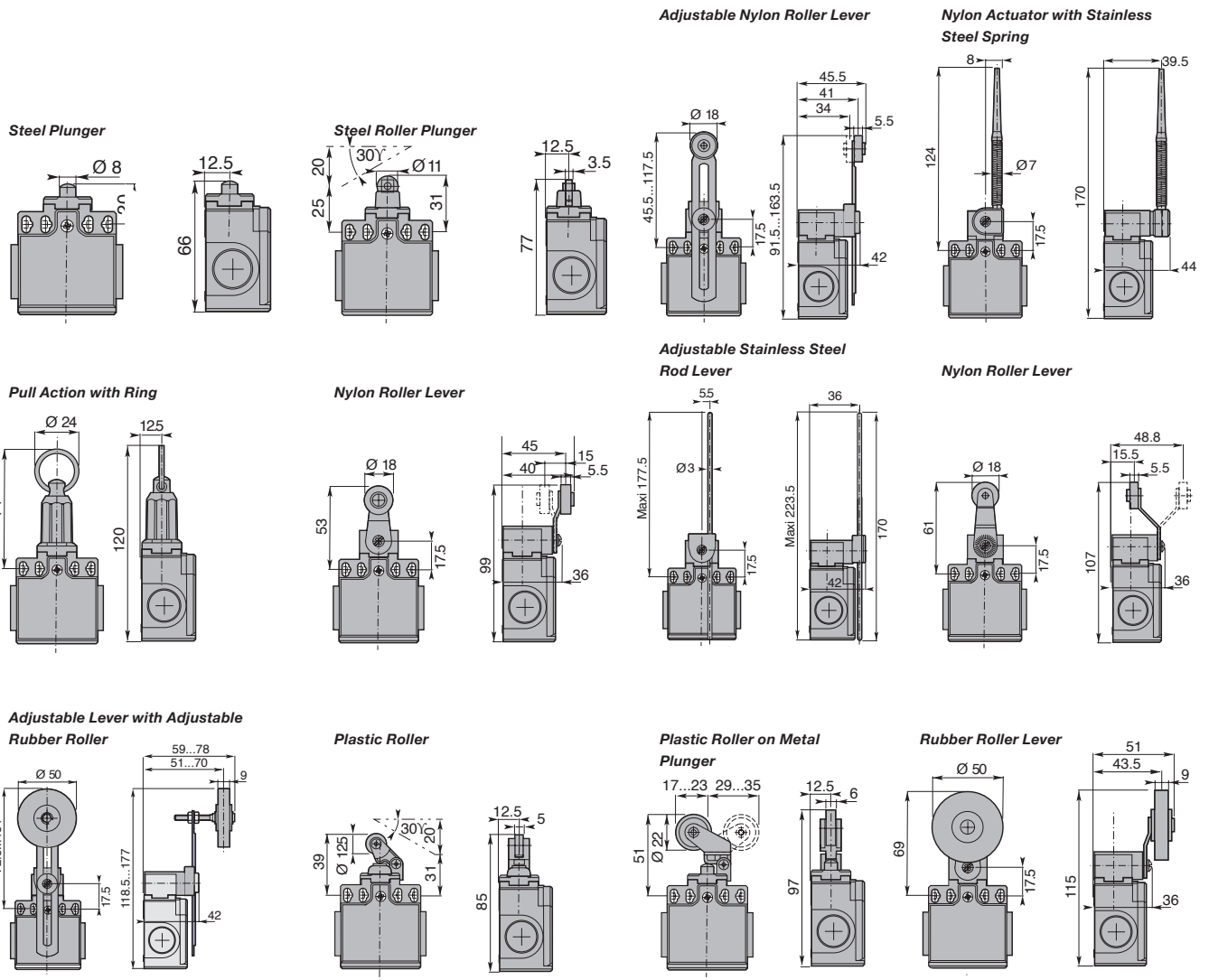
CE 20



SPECIFICATION

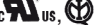
Rating	500V
Shock withstand	50g
Impulse withstand voltage	6kV
Working temperature	-25°C to +70°C
Switching frequency	3600 cycles/h
Load factor	0.5
Short circuit protection	10A gG fuse

IP65 PLASTIC CASING	PLUNGER TYPE	MAX ACTUATION SPEED	ACTUATION/ NC OPERATION
CE20.00.AP	Steel Plunger	0.5ms ⁻¹	15N/30N
CE20.00.BP	Steel Roller Plunger	0.3ms ⁻¹	12N/30N
CE20.00.FP	Adjustable Nylon Roller Lever	1.5ms ⁻¹	0.10Nm/0.32Nm
CE20.00.HLTP	Nylon Actuator with Stainless Steel Spring	1.5ms ⁻¹	0.10Nm/-
CE20.00.TP	Pull Action with Ring	0.5ms ⁻¹	0.30Nm/-
CE20.00.EP	Nylon Roller Lever	1.5ms ⁻¹	0.10Nm/0.32Nm
CE20.00.HP	Adjustable Stainless Steel Rod Lever	1.5ms ⁻¹	0.15Nm/0/30Nm
CE20.00.IP	Nylon Roller Lever	1.5ms ⁻¹	0.10Nm/0.32Nm
CE20.00.FRP/50	Adjustable Lever with Adjustable Rubber Roller	1.5ms ⁻¹	0.10Nm/0.32Nm
CE20.00.CP	Plastic Roller	1.0ms ⁻¹	7N/24N
CE20.00.DP	Plastic Roller on Metal Plunger	1.0ms ⁻¹	7N/24N
CE20.00.EP/50	Rubber Roller Lever	1.5ms ⁻¹	0.10Nm/0.32Nm



LIMIT & SAFETY SWITCHES

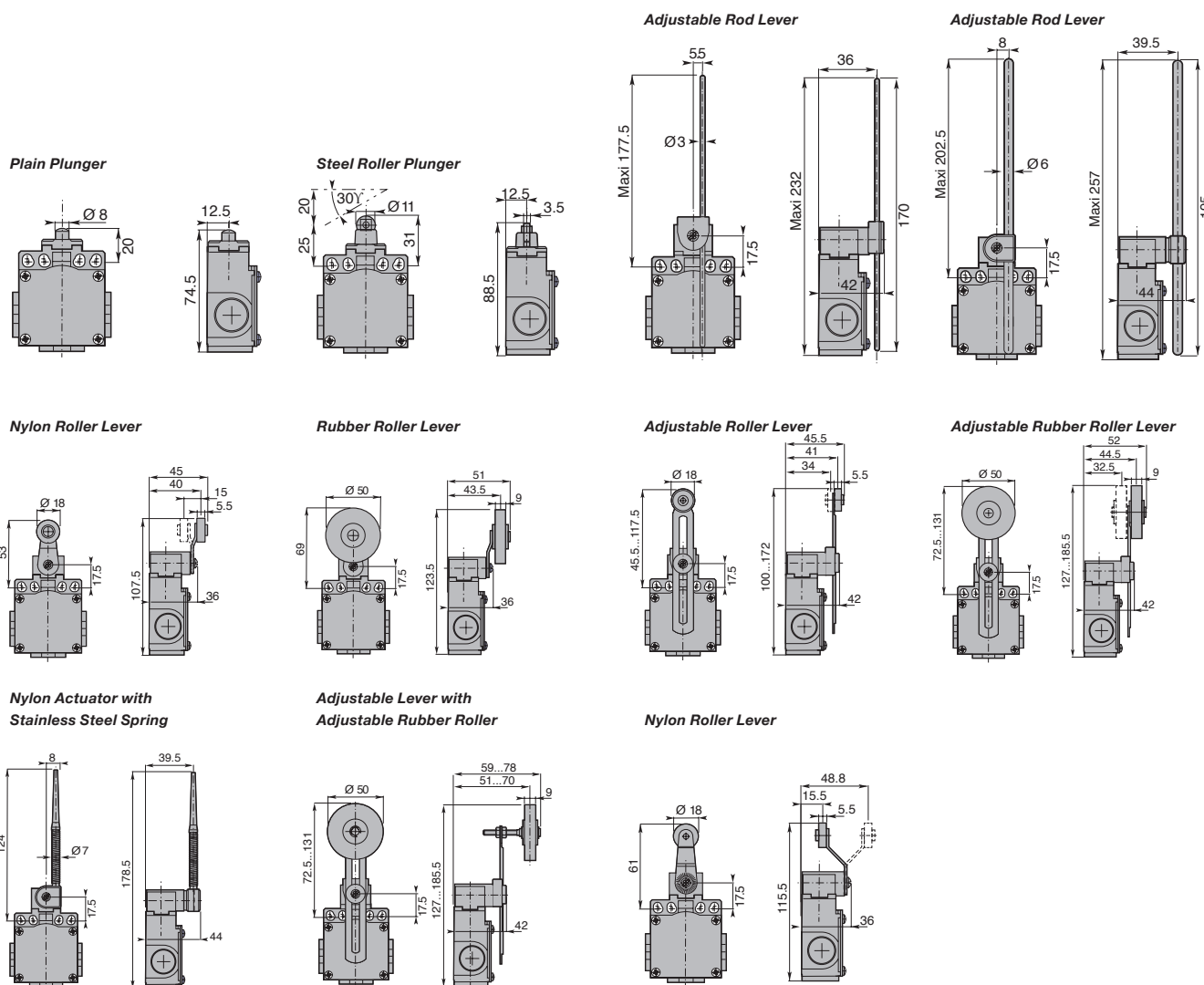
50mm Wide IP66 Limit Switches

- 50mm width
- IP66 metal casing
- Snap action contacts
- Other types available
-  approved



SPECIFICATION	
Rating	500V
Shock withstand	50g
Impulse withstand voltage	6kV
Working temperature	-25°C to +70°C
Switching frequency	3600 cycles/h
Load factor	0.5
Short circuit protection	10A gG fuse

IP66 METAL CASING	PLUNGER TYPE	MAX ACTUATION SPEED	ACTUATION/ NC OPERATION
CE21.00.AM	Plain Plunger	0.5ms ⁻¹	15N/30N
CE21.00.BM	Steel Roller Plunger	0.3ms ⁻¹	12N/30N
CE21.00.HM	Adjustable Rod Lever	1.5ms ⁻¹	0.10Nm/0.32Nm
CE21.00.GM	Adjustable Rod Lever	1.5ms ⁻¹	0.10Nm/0.32Nm
CE21.00.EM	Nylon Roller Lever	1.5ms ⁻¹	0.10Nm/0.32Nm
CE21.00.EM/50	Rubber Roller Lever	1.5ms ⁻¹	0.10Nm/0.32Nm
CE21.00.FM	Adjustable Roller Lever	1.5ms ⁻¹	0.10Nm/0.32Nm
CE21.00.FM/50	Adjustable Rubber Roller Lever	1.5ms ⁻¹	0.10Nm/0.32Nm
CE21.00.HLTM	Nylon Actuator with Stainless Steel Spring	1.5ms ⁻¹	0.10Nm/-
CE21.00.FRM/50	Adjustable Lever with Adjustable Rubber Roller	1.0ms ⁻¹	0.10Nm/-
CE21.00.IM	Nylon Roller Lever	1.0ms ⁻¹	0.10Nm/0.32Nm




+44 (0)1638 716101
 info@camdenboss.com
 www.camdenboss.com

We operate a constant improvement policy, our products are subject to change without notice.

Ver 1.1

LIMIT & SAFETY SWITCHES

60mm Wide Limit Switches

- 60mm width
- IP66 metal casing
- Snap action contacts
- Other types available
-  approved

CE 31

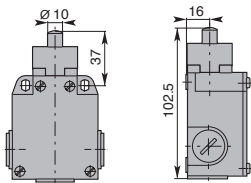


SPECIFICATION

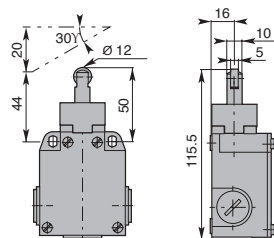
Rating	500V
Shock withstand	50g
Impulse withstand voltage	6kV
Working temperature	-25°C to +70°C
Switching frequency	3600 cycles/h
Load factor	0.5
Short circuit protection	10A gG fuse

IP66 METAL CASING	PLUNGER TYPE	MAX ACTUATION SPEED	ACTUATION/ NC OPERATION
CE31.00.AM	Plain Plunger	0.5ms ⁻¹	30N/45N
CE31.00.BM	Steel Roller Plunger	0.5ms ⁻¹	22N/40N
CE31.00.CM	Side Roller Lever	1.5ms ⁻¹	12N/30N
CE31.00.HM	Adjustable Rod Lever	1.5ms ⁻¹	0.15Nm/0.30Nm
CE31.00.GM	Adjustable Rod Lever	1.5ms ⁻¹	0.15Nm/0.30Nm
CE31.00.EM	Nylon Roller Lever	1.5ms ⁻¹	0.15Nm/0.30Nm
CE31.00.EM/50	Rubber Roller Lever	1.5ms ⁻¹	0.15Nm/0.30Nm
CE31.00.FM	Adjustable Roller Lever	1.5ms ⁻¹	0.15Nm/0.30Nm
CE31.00.FM/50	Adjustable Roller Lever	1.5ms ⁻¹	0.15Nm/0.32Nm
CE31.00.LBM/90	Stainless Steel Lateral Plunger with Vertical Roller	1.5ms ⁻¹	30N/50N
CE31.00.LAM	Stainless Steel Lateral Plain Plunger	0.5ms ⁻¹	30N/50N
CE31.00.LM	Stainless Steel Spring Multidirectional Acuator	1.0ms ⁻¹	0.18N/-

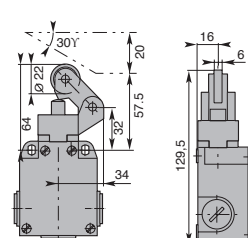
Plain Plunger



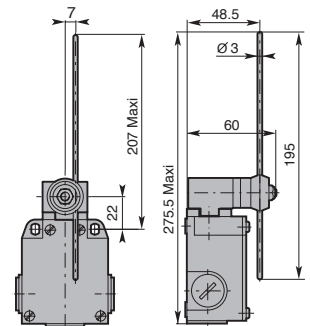
Steel Roller Plunger



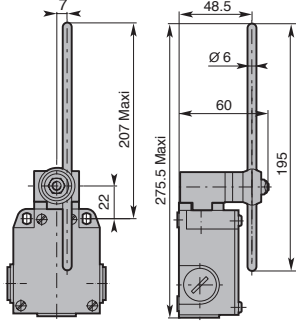
Side Roller Lever



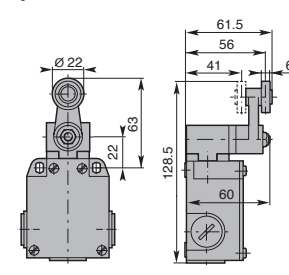
Adjustable Rod Lever



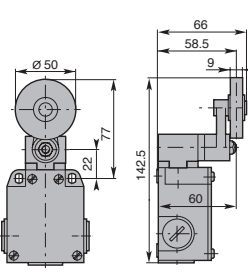
Adjustable Rod Lever



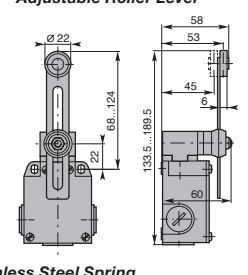
Nylon Roller Lever



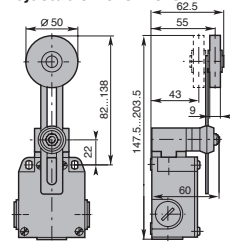
Rubber Roller Lever



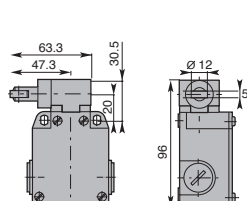
Adjustable Roller Lever



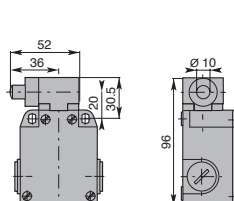
Adjustable Roller Lever



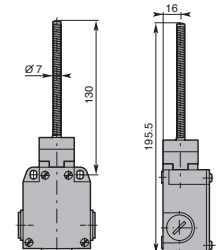
Stainless Steel Lateral Plunger with Vertical Roller



Stainless Steel Lateral Plain Plunger



Stainless Steel Spring Multidirectional Actuator



PCB
TERMINAL
BLOCKS

INTER-
CONNECTION

FUSES &
FUSE-
HOLDERS

LEDs &
INDICATORS

MINIATURE
SWITCHES

LIMIT &
SAFETY
SWITCHES

CONTROL
PRODUCTS

INTERFACE
MODULES &
SUPPORTS

RELAY
BASES


ENCLOSURES

BATTERIES

TRANS-
FORMERS

LIMIT & SAFETY SWITCHES

30mm Wide Pre-wired Limit Switches

- 30mm width
- Pre wired. 1M cable standard
- For 2M cable add suffix /2
- Metal casing
- IP67
- Snap action contacts
-  us, approved

CE 70



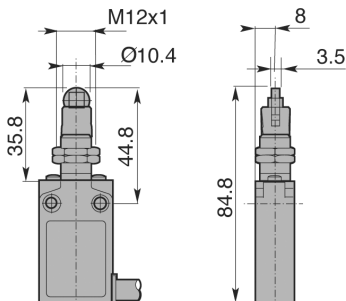
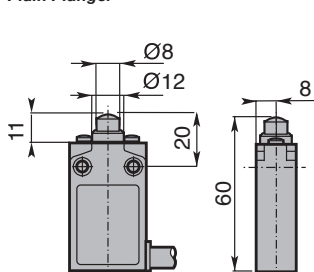
SPECIFICATION

Rating	400V
Cable	PVC 1m 4x0.75mm ²
Impulse withstand voltage	4kV
Working temperature	-25°C to +70°C
Switching frequency	3600 cycles/h
Load factor	0.5
Short circuit protection	6A gG fuse

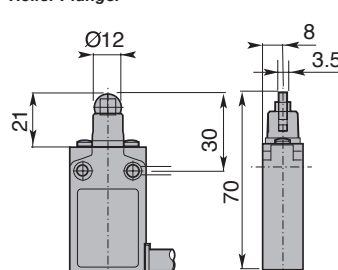
TYPE NO.	PLUNGER TYPE	MAX ACTUATION SPEED	ACTUATION/NC OPERATION
CE70.0.AM	Plain Plunger	0.5ms ⁻¹	15N/30N
CE70.0.BLM	Roller Plunger With Fixing Nut	0.1ms ⁻¹	10N/30N
CE70.0.BM	Roller Plunger	0.1ms ⁻¹	10N/30N
CE70.0.EM	Roller Lever	1.5ms ⁻¹	0.08Nm/0.28Nm
CE70.0.FM	Adjustable Nylon Roller Lever	1.5ms ⁻¹	0.08Nm/0.28Nm
CE70.0.GM	Adjustable Rod Lever	1.5ms ⁻¹	0.08Nm/0.28Nm
CE70.0.HM	Adjustable Rod Lever	1.5ms ⁻¹	0.08Nm/0.28Nm

Roller Plunger With Fixing Nut

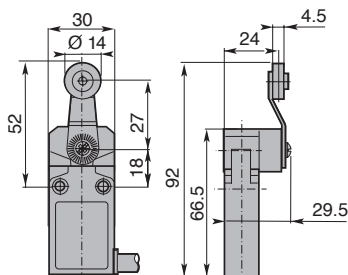
Plain Plunger



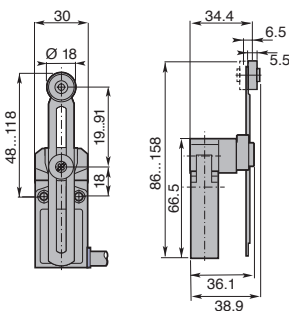
Roller Plunger



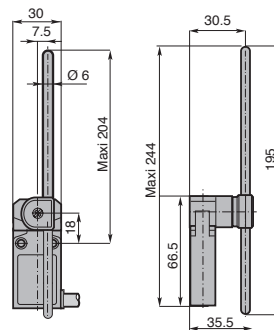
Roller Lever



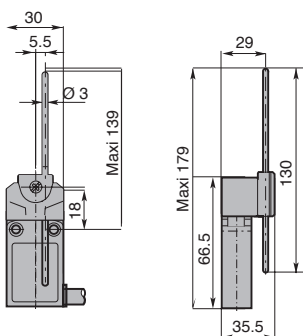
Adjustable Nylon Roller Lever



Adjustable Rod Lever



Adjustable Rod Lever



+44 (0)1638 716101
 info@camdenboss.com
 www.camdenboss.com

We operate a constant improvement policy, our products are subject to change without notice.

Ver 1.1



PCB
TERMINAL
BLOCKS

INTER-
CONNECTION

FUSES &
FUSE-
HOLDERS

LEDs &
INDICATORS

MINIATURE
SWITCHES

LIMIT &
SAFETY
SWITCHES

CONTROL
PRODUCTS

INTERFACE
MODULES &
SUPPORTS

RELAY
BASES

ENCLOSURES

BATTERIES

TRANS-
FORMERS

LIMIT & SAFETY SWITCHES

35mm Wide Pre-wired Limit Switches

- 35mm width
- Pre wired
- Metal casing
- IP67
- Snap action contacts
- Other types available
- CE, UL, approved

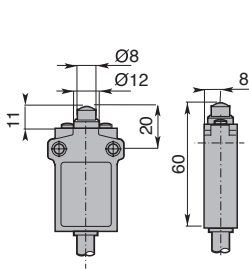


SPECIFICATION

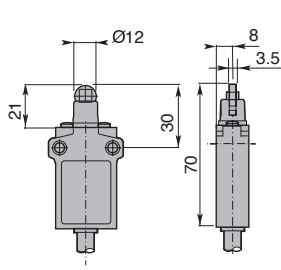
Rating	400V
Cable	PVC 1m 4x0.75mm ²
Impulse withstand voltage	4kV
Working temperature	-25°C to +70°C
Switching frequency	3600 cycles/h
Load factor	0.5
Short circuit protection	6A gG fuse

TYPE NO.	PLUNGER TYPE	MAX ACTUATION SPEED	ACTUATION/NC OPERATION
CE60.00.AM	Plain Plunger	0.5ms ⁻¹	15N/30N
CE60.00.BM	Roller Plunger	0.1ms ⁻¹	10N/30N
CE60.00.EM	Roller Lever	1.5ms ⁻¹	0.08Nm/0.28Nm
CE60.00.FM	Adjustable Nylon Roller Lever	1.5ms ⁻¹	0.08Nm/0.28Nm
CE60.00.GM	Adjustable Rod Lever	1.5ms ⁻¹	0.08Nm/0.28Nm
CE60.00.HM	Adjustable Rod Lever	1.5ms ⁻¹	0.08Nm/0.28Nm

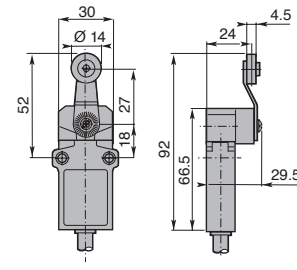
Plain Plunger



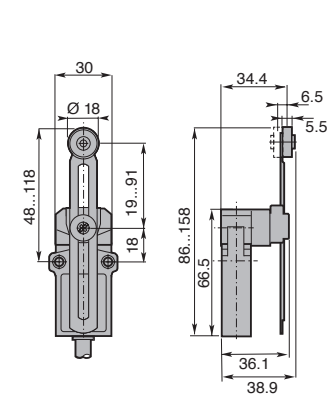
Roller Plunger



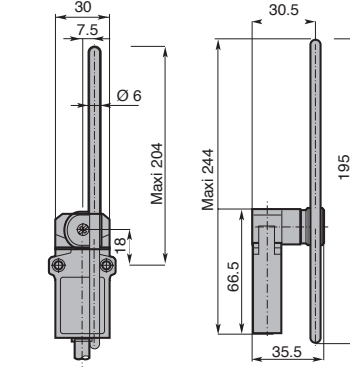
Roller Lever



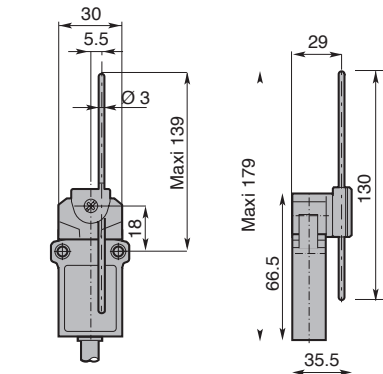
Adjustable Nylon Roller Lever



Adjustable Rod Lever



Adjustable Rod Lever



PCB
TERMINAL
BLOCKS

INTER-
CONNECTION

FUSES &
FUSE-
HOLDERS

LEDs &
INDICATORS

MINIATURE
SWITCHES

LIMIT &
SAFETY
SWITCHES

CONTROL
PRODUCTS

INTERFACE
MODULES &
SUPPORTS

RELAY
BASES

ENCLOSURES

BATTERIES

TRANS-
FORMERS

LIMIT & SAFETY SWITCHES


Safety Limit Switches

- Visible operation electromechanical limit safety switch
- High switch current
- Precise operating points
- Snap action, slow action, break and make before break, simultaneous action contact block options
- 1, 2 & 3 cable inlet options
- Polymeric IP65 and metal IP66 casing
- PG13.5 inlet as standard
- M20x1.5 inlet available to order


SPECIFICATION

Rating	10A/24VAC, 1A/230VAC-3, 9A/380VAC-1
Insulation voltage	8A/24VDC-2, 0.27A/250VDC
	690V
	CE10-M & CE21-M 400V
Impulse withstand voltage	6kV
Operating temperature	-25°C to +70°C
Short circuit protection	Fuse 10A type gG


S5 - 90° adjustable head key operated



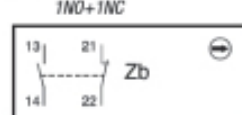
SC - Zinc plated shaft



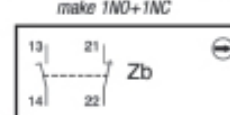
T - Pull wire without reset for simple stop



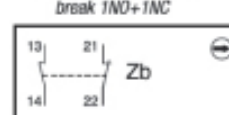
00 Snap action 1NO+1NC



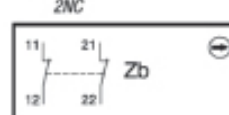
05 Slow action break before make 1NO+1NC



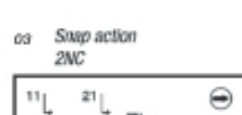
01 Slow action make before break 1NO+1NC



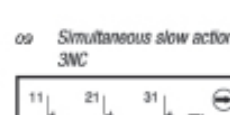
02 Simultaneous slow action 2NC



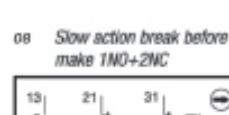
03 Snap action 2NC



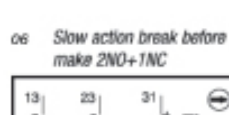
09 Simultaneous slow action 3NC



08 Slow action break before make 1NO+2NC



06 Slow action break before make 2NO+1NC



30mm Polymeric Casing 1 Cable Inlet IP65

TYPE NO.	CONTACT HEIGHT
CE10.00.S5P	00
CE10.05.S5P	05
CE10.01.S5P	01
CE10.02.S5P	02
CE10.03.S5P	03

TYPE NO.	CONTACT HEIGHT
CE10.00.SCP	00
CE10.05.SCP	05
CE10.01.SCP	01
CE10.02.SCP	02
SC10.03.SCP	03

TYPE NO.	CONTACT HEIGHT
CE10.00.TB	00
CE10.05.TB	05
CE10.01.TB	01
CE10.02.TB	02
CE10.03.TB	03



30mm Metal Casing 1 Cable Inlet IP66

TYPE NO.	CONTACT HEIGHT
CE10.00.S5M	00
CE10.05.S5M	05
CE10.01.S5M	01
CE10.02.S5M	02
CE10.03.S5M	03

TYPE NO.	CONTACT HEIGHT
CE10.00.SCM	00
CE10.05.SCM	05
CE10.01.SCM	01
CE10.02.SCM	02
CE10.03.SCM	03

TYPE NO.	CONTACT HEIGHT
CE10.00.TM	00
CE10.05.TM	05
CE10.01.TM	01
CE10.02.TM	02
CE10.03.TM	03



+44 (0)1638 716101
 info@camdenboss.com
 www.camdenboss.com

We operate a constant improvement policy, our products are subject to change without notice.

Ver 1.1

- PCB TERMINAL BLOCKS
- INTER-CONNECTION
- FUSES & FUSE-HOLDERS
- LEDs & INDICATORS
- MINIATURE SWITCHES
- LIMIT & SAFETY SWITCHES**
- CONTROL PRODUCTS
- INTERFACE MODULES & SUPPORTS
- RELAY BASES
- ENCLOSURES
- BATTERIES
- TRANSFORMERS

LIMIT & SAFETY SWITCHES

PCB
TERMINAL
BLOCKS

INTER-
CONNECTION

FUSES &
FUSE-
HOLDERS

LEDs &
INDICATORS

MINIATURE
SWITCHES

LIMIT &
SAFETY
SWITCHES

CONTROL
PRODUCTS

INTERFACE
MODULES &
SUPPORTS

RELAY
BASES

ENCLOSURES

BATTERIES

TRANS-
FORMERS

40mm Polymetric Casing 1 Cable Inlet IP65 S5

TYPE NO.	CONTACT HEIGHT
CE41.00.S5P	00
CE41.05.S5P	05
CE41.01.S5P	01
CE41.02.S5P	02
CE41.03.S5P	03
CE41.09.S5P	09
CE41.08.S5P	08
CE41.06.S5P	06



40mm Metal Casing 1 Cable Inlet IP66 S5

TYPE NO.	CONTACT HEIGHT
CE41.00.S5M	00
CE41.05.S5M	05
CE41.01.S5M	01
CE41.02.S5M	02
CE41.03.S5M	03
CE41.09.S5M	09
CE41.08.S5M	08
CE41.06.S5M	06

T

TYPE NO.	CONTACT HEIGHT
CE41.00.TM	00
CE41.05.TM	05
CE41.01.TM	01
CE41.02.TM	02
CE41.03.TM	03
CE41.09.TM	09
CE41.08.TM	08
CE41.06.TM	06



50mm Polymeric Casing 3 Cable Inlet IP65 S5

TYPE NO.	CONTACT HEIGHT
CE20.00.S5P	00
CE20.05.S5P	05
CE20.01.S5P	01
CE20.02.S5P	02
CE20.03.S5P	03

SC

TYPE NO.	CONTACT HEIGHT
CE20.00.SCP	00
CE20.05.SCP	05
CE20.01.SCP	01
CE20.02.SCP	02
CE20.03.SCP	03

T

TYPE NO.	CONTACT HEIGHT
CE20.00.TB	00
CE20.05.TB	05
CE20.01.TB	01
CE20.02.TB	02
CE20.03.TB	03



50mm Metal Casing 3 Cable Inlet IP66 S5

TYPE NO.	CONTACT HEIGHT
CE21.00.S5M	00
CE21.05.S5M	05
CE21.01.S5M	01
CE21.02.S5M	02
CE21.03.S5M	03

SC

TYPE NO.	CONTACT HEIGHT
CE21.00.SCM	00
CE21.05.SCM	05
CE21.01.SCM	01
CE21.02.SCM	02
CE21.03.SCM	03

T

TYPE NO.	CONTACT HEIGHT
CE21.00.TM	00
CE21.05.TM	05
CE21.01.TM	01
CE21.02.TM	02
CE21.03.TM	03



60mm Metal Casing 1 Cable Inlet IP66 S5

TYPE NO.	CONTACT HEIGHT
CE31.00.S5M	00
CE31.05.S5M	05
CE31.01.S5M	01
CE31.02.S5M	02
CE31.03.S5M	03
CE31.09.S5M	09
CE31.08.S5M	08
CE31.06.S5M	06

T

TYPE NO.	CONTACT HEIGHT
CE31.00.TM	00
CE31.05.TM	05
CE31.01.TM	01
CE31.02.TM	02
CE31.03.TM	03
CE31.09.TM	09
CE31.08.TM	08
CE31.06.TM	06





CAMDENBOSS
ELECTRONICS & ENCLOSURES

60 James Carter Road
Mildenhall
Suffolk
IP28 7DE
UK

+44 (0) 1638 716101
info@camdenboss.com
www.camdenboss.com