

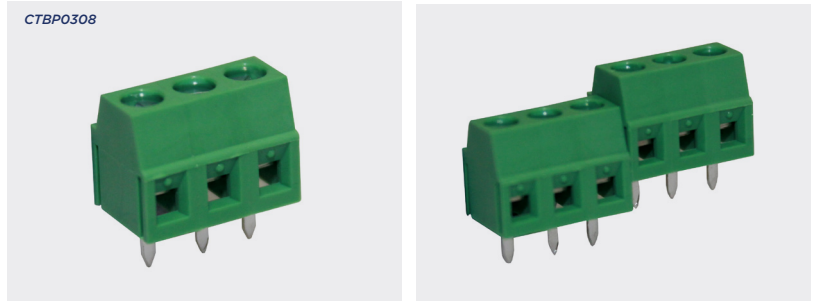
002  
PCB TERMINAL  
BLOCKS081  
TERMINAL STRIPS095  
WIRE TO BOARD  
CONNECTORS100  
CIRCULAR  
CONNECTORS151  
IP68 CONNECTORS158  
INTERFACE  
MODULES AND  
RELAY BASES

# 3.81mm low profile vertical rising clamp terminal blocks

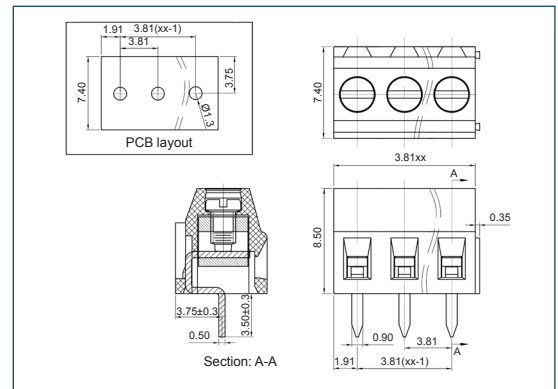
## Product overview

- 2 and 3 pole Interlocking
- 4-12 pole solid block
- Ultra low profile
- Moulded in green UL94-V0 flame retardant PA
- Professional rising clamp terminals
- 0.32-1.6mm<sup>2</sup> (28-16AWG) cable
- Captive screws
- Guided pin alignment
- Double interlock mechanism for increased strength
- approved

CTBP0308



| SPECIFICATION             |                              | PART NO.    | POLES | LENGTH |
|---------------------------|------------------------------|-------------|-------|--------|
| Rating                    | UL=15A/300V, VDE=15A/250V    | CTBP0308/2  | 2     | 7.62mm |
| Impulse withstand voltage | 2.0kV/1min                   | CTBP0308/3  | 3     | 11.4mm |
| Working temperature       | -40°C + 105°C                | CTBP0308/4  | 4     | 15.2mm |
| Moulding                  | UL94-V0 flame retardant PA66 | CTBP0308/5  | 5     | 19.1mm |
| Pin/terminal              | Tinned, nickel plated brass  | CTBP0308/6  | 6     | 22.9mm |
| Rising clamp              | Tinned, nickel plated brass  | CTBP0308/7  | 7     | 26.7mm |
| Screw/torque              | M2 steel zinc plated, 0.2Nm  | CTBP0308/8  | 8     | 30.5mm |
| Recommended PCB hole size | ø1.3mm                       | CTBP0308/9  | 9     | 34.3mm |
|                           |                              | CTBP0308/10 | 10    | 38.1mm |
|                           |                              | CTBP0308/11 | 11    | 41.9mm |
|                           |                              | CTBP0308/12 | 12    | 45.7mm |



## KEY FEATURES

Ultra low profile | Double interlock mechanism | Professional rising clamp

