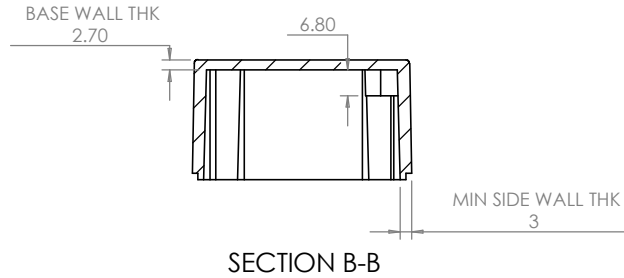


OVERALL ASSEMBLY DIMENSIONS:

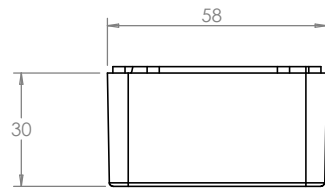
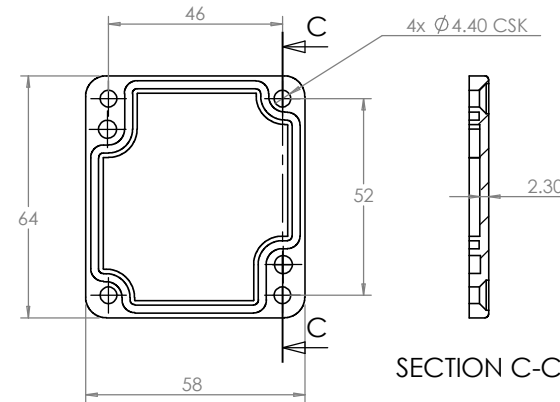
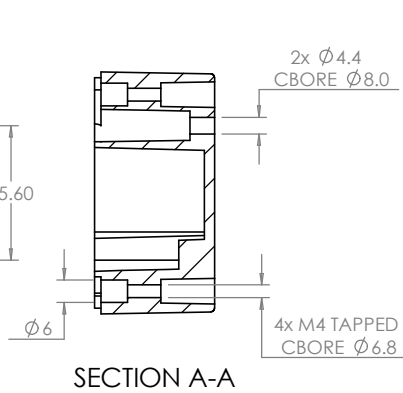
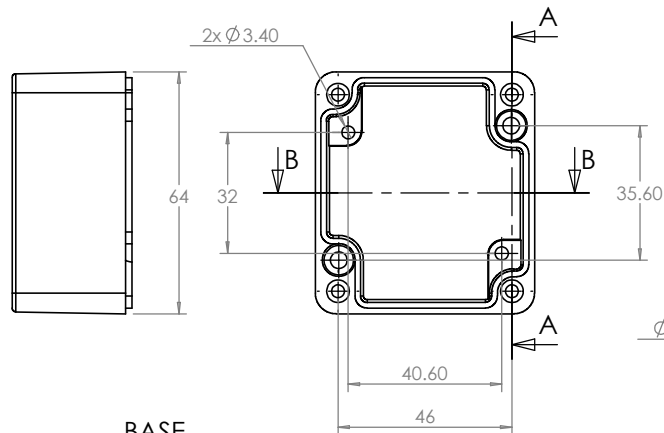
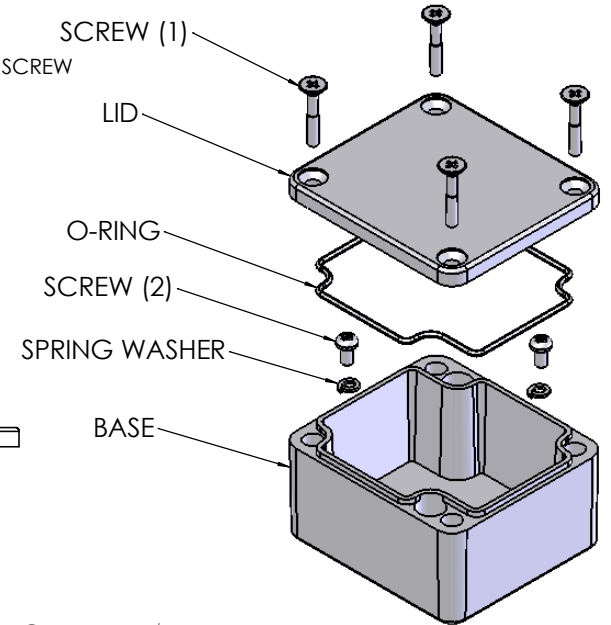
EXTERNAL - 64 x 58 x 35.1

INTERNAL - 58 x 52 x 30



(1) 4x M4 UNIT ASSEMBLY SCREW

(2) 2x SELF-TAPPING INTERNAL MOUNTING SCREW



<p>JAMES CARTER RD, MILDENHALL, SUFFOLK. IP28 7DE TEL: 01638 716101 FAX: 01638 716554 EMAIL: Sales@CamdenBoss.com WEB: www.CamdenBoss.com</p>		UNLESS OTHERWISE SPECIFIED: DIMENSIONS ARE IN MILLIMETERS		DO NOT SCALE DRAWING	REVISION. 0	
		FINISH: SMOOTH		TITLE: ASSEMBLY DRG FOR 5500-04		
DRAWN	S.HARDINGE	SJH	04/01/06	MATERIAL: DIE-CAST ALUMINIUM	DWG NO. 5500-04	
CHK'D	-	-	-	PROJECTION.	SCALE: 1 : 2	
					SHEET 1 OF 1	A4