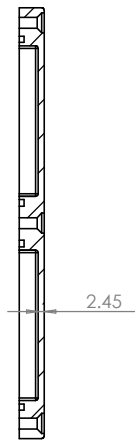
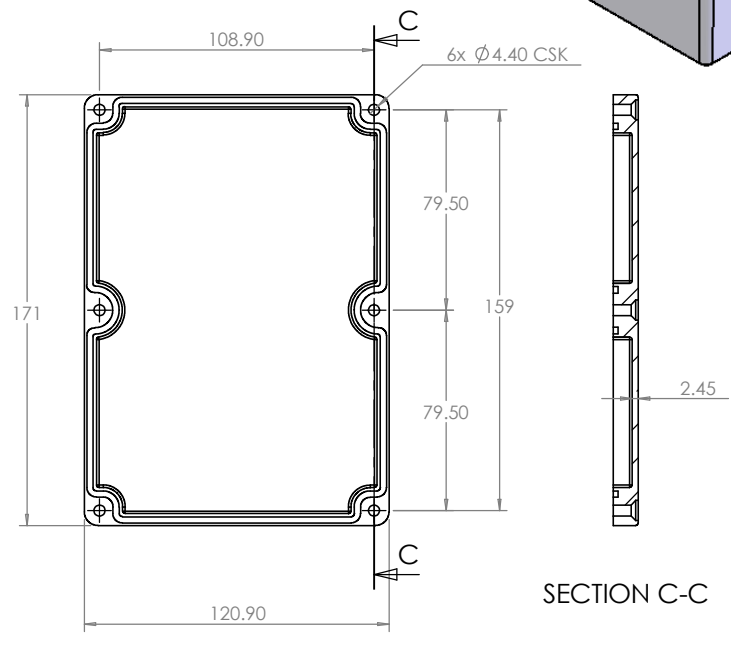
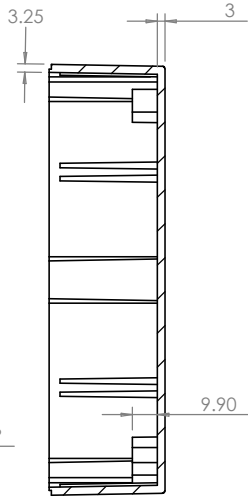
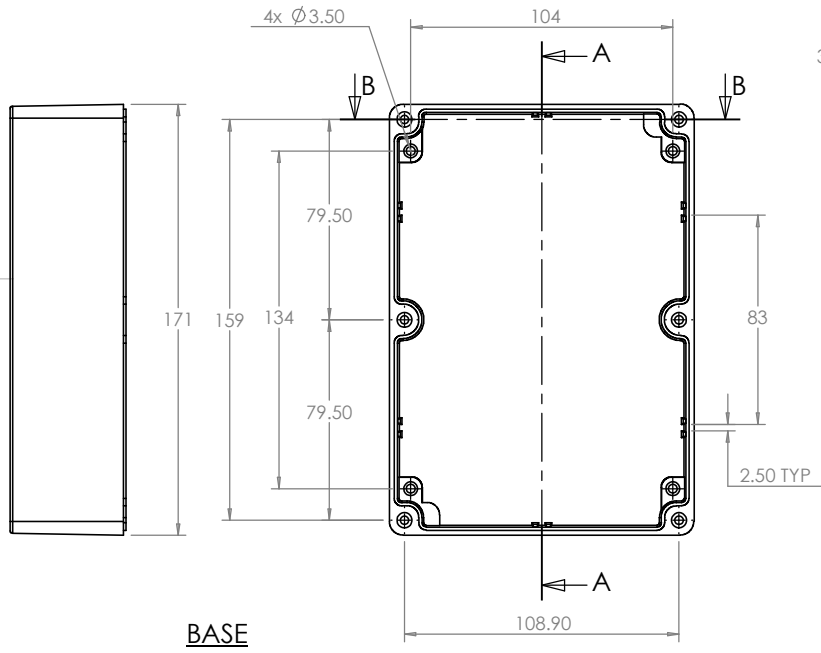
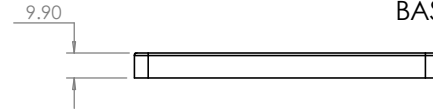
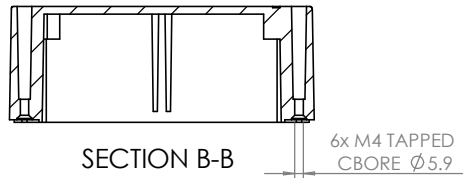
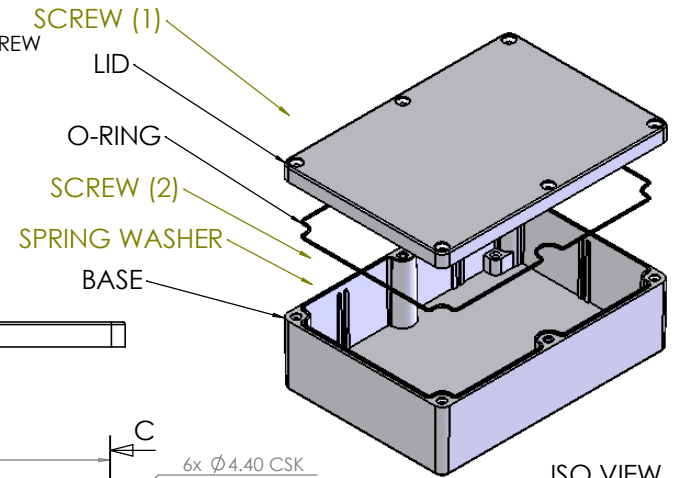


OVERALL ASSEMBLY DIMENSIONS:

EXTERNAL - 171 x 120.9 x 54.9

INTERNAL - 164.5 x 114.4 x 49.4

- (1) 6x M4 UNIT ASSEMBLY SCREW
- (2) 2x SELF-TAPPING INTERNAL MOUNTING SCREW



**CAMDENBOSS**  
ELECTRONICS & ENCLOSURES

JAMES CARTER RD, MILDENHALL, SUFFOLK. IP28 7DE  
TEL: 01638 716101 FAX: 01638 716554  
EMAIL: Sales@CamdenBoss.com  
WEB: www.CamdenBoss.com

UNLESS OTHERWISE SPECIFIED:  
DIMENSIONS ARE IN MILLIMETERS

FINISH:  
**SMOOTH**

MATERIAL:  
DIE-CAST ALUMINIUM

PROJECTION.

DO NOT SCALE DRAWING      REVISION. 0

TITLE:  
**ASSEMBLY DRG FOR 5500-20**

DWG NO.      **5500-20**

	NAME	SIGNED	DATE
DRAWN	S.HARDINGE	SJH	09/01/06
CHK'D	-	-	-

SCALE: 1 : 3

SHEET 1 OF 1

A4