

# DIECAST AND METAL BOXES

## Metal Consoles

A range of sturdy cases made from 1mm thick steel with an epoxy finish. Front and rear panels are natural coloured anodised aluminium.

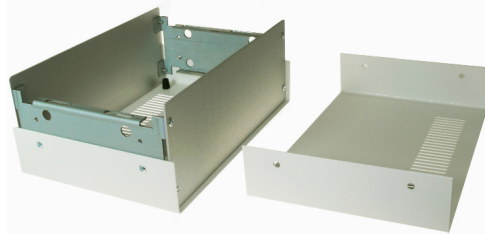
- The consoles are supplied with four non-slip feet
- Two removable side plates are placed internally onto which PCB's and mounting trays can be affixed
- Easily customized

### SPECIFICATION

<b>Materials</b>	Lid & base: 0.9mm steel Front & back: 1.5mm aluminium Mounting plates: 1.5mm zintec
<b>Standard Colours</b>	Polar Grey
<b>Standard unit includes</b>	Lid & base, front & back, x2 side plates, 4x rubber feet, x16 screws

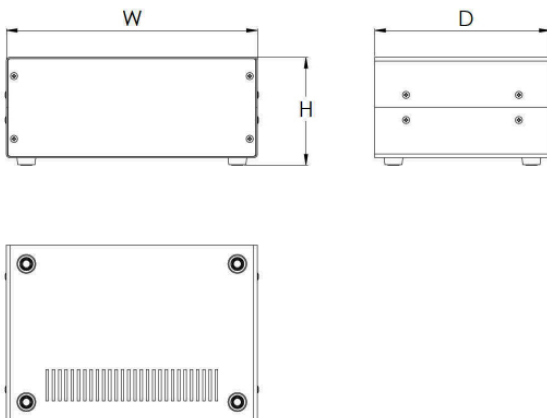


CMCB00002



CMCB00002

TYPE NO.	LENGTH	DEPTH	HEIGHT
CMCB00001	110mm	150mm	70mm
CMCB00002	140mm	200mm	80mm
CMCB00003	160mm	250mm	100mm



UNIVERSAL ENCLOSURES

HAND HELD CASES

HEAVY DUTY ENCLOSURES

DIN RAIL BOXES

INTERFACE SUPPORTS

CONTROL STATIONS

DIECAST & METAL BOXES

DESKTOP & INSTRUMENT CASES

POTTING BOXES

19" ENCLOSURES

19" CABINETS

DEVELOPMENT BOARDS

CUSTOM SIZED ENCLOSURES

CUSTOM SERVICES



+44 (0)1638 716101  
info@camdenboss.com  
www.camdenboss.com

We operate a constant improvement policy, our products are subject to change without notice.

Ver 1.0 Iss 2

**CAMDENBOSS**  
ELECTRONICS & ENCLOSURES