

PCB
TERMINAL
BLOCKS

INTER-
CONNECTION

FUSES &
FUSE-
HOLDERS

LEDS &
INDICATORS

MINIATURE
SWITCHES

LIMIT &
SAFETY
SWITCHES

22mm DIAMETER CONTROL SWITCHES

Flush Push Buttons		CCTTR3	p137
On/Off Push Button		CCTTR0	p137
Arrow Buttons		CCTTRA	p137
Start/Stop Push Button	Start/Stop	CCTTRS	p138
	On/Off	CCTTRO	p138
40mm E-Stop	Key Release	CCTTM41L	p138
	Twist Release	CCTTM40L	P138
	Twist Release	CCTRM60L	p138
60mm E-Stop		CCTTSS	p138
Selector Switch		CCTTP	p139
Mounting Plate		CCTTC	p139
Contact Block		CCTTRDC	p139
Dust Cap		CCTTK	p139
Keys for E-Stop Release		CCTTB	p139
Button Surrounds			

CONTROL PRODUCTS

INTERFACE
MODULES &
SUPPORTS

CONTROL STATIONS

Standard Boxes		CCS-00	p00
Single Button	51mm High	CCSS00-01	p140
	74mm High	CCSS00-01	p180
Two Button	51mm High	CCSS05-02	p140
	74mm High	CCSS06-02	p140
Three Button	51mm High	CCSS07-03	p14
	74mm High	CCSS08-03	p140
Four Button	51mm High	CCSS09-04	p140
	74mm High	CCSS10-04	p140
Five Button	74mm High	CCSS11-05	p140
Six Button	74mm High	CCSS11-06	p140
Mounting Plate		CCSP	p141

BATTERIES

HEAVY DUTY FOOTSWITCH

CFSH p142

TRANS-
FORMERS

AXXATRONIC

AXXATRONIC GmbH
Alemannenstrasse 10
71296 Heimsheim

Tel. 07033 / 46 66 1 - 0
Fax 07033 / 46 66 1 - 23



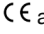
info@axxatronic.de
www.axxatronic.de

Deutsche CamdenBoss-Vertretung für das komplette Lieferprogramm.

Alle Angaben ohne Gewähr auf Vollständigkeit und Richtigkeit.

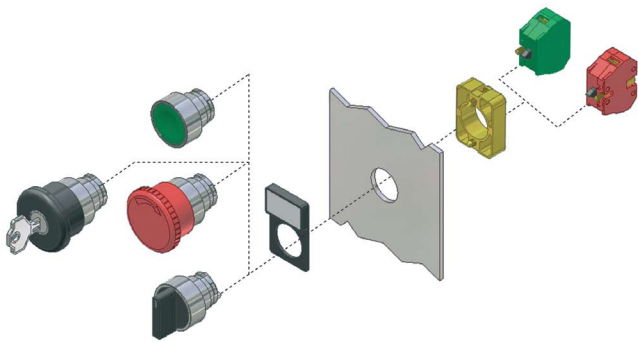
CONTROL PRODUCTS

22mm Diameter Control Switches

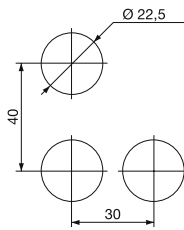
- Metal bodied control Push-Buttons, E-stops & selector switches
- Rated 600V, 10A max AC
- Operating frequency 3,600 per hour
- Panels mount 1-6mm thick
- Positive opening operation
- Conform to IEC 947-5-1 & EN 60947-5-1
- Terminal marking to EN 50013
- Other button options available to order
-    approved

SPECIFICATION

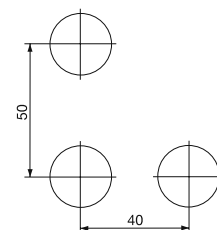
Rated voltage		600V
Rated AC current	24V	10A
	240V	6A
	400V	4A
Rated DC current	24V	2.8A
	125V	0.55A
	250V	0.27A
Short circuit protection	gG fuse	10A
Impulse withstand		6kV
Internal resistance		<25mΩ
Wire acceptance		0.75-2.5mm ²
Rated temperature	Operating	-25° to +70°
	Storage	-40° to +80°
Body / escutcheon		Chromium plated
Protection	Electrical	Class I
	Water Ingress	IP65
Life		1x10 ⁶ operation



230V & same polarity panel spacing

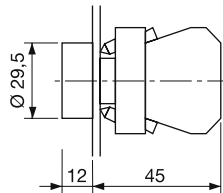


400V & different polarity panel spacing



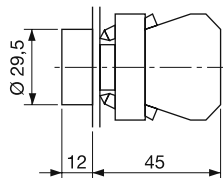
Flush Push Buttons

TYPE NO.	COLOUR
CCTTR30BK	Black
CCTTR30RD	Red
CCTTR30GW	Green
CCTTR30YW	Yellow
CCTTR30BL	Blue
CCTTR30WH	White



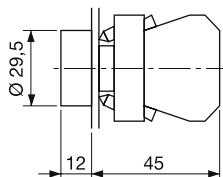
On/Off Push Buttons

TYPE NO.	COLOUR
CCTTR00RD	Red -0
CCTTR01GN	Green -1



Arrow Push Buttons

TYPE NO.	COLOUR
CCTTRAHBK	Horizontal
CCTTRAVBK	Vertical



PCB
TERMINAL
BLOCKS

INTER-
CONNECTION

FUSES &
FUSE-
HOLDERS

LEDs &
INDICATORS

MINIATURE
SWITCHES

LIMIT &
SAFETY
SWITCHES

CONTROL
PRODUCTS

INTERFACE
MODULES &
SUPPORTS

RELAY
BASES

ENCLOSURES

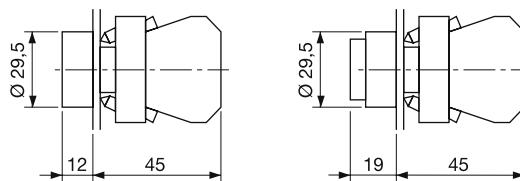
BATTERIES

TRANS-
FORMERS

CONTROL PRODUCTS

Start/Stop Push Buttons

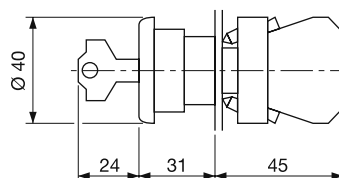
TYPE NO.	COLOUR
CCTTRSTWH	White Start
CCTTRSPBK	Black Stop
CCTTRONWH	White On
CCTTROFBK	Black Off



Black Button - Extended Height

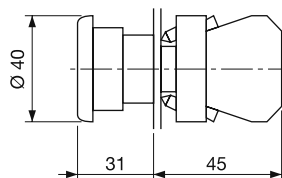
40mm E-stop Key Release

TYPE NO.	COLOUR
CCTTM41LB	Black
CCTTM41LR	Red



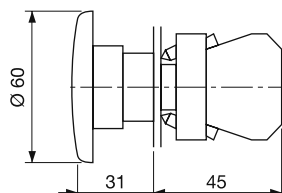
40mm E-stop Twist Release

TYPE NO.	COLOUR
CCTTM40LB	Black
CCTTM40LR	Red



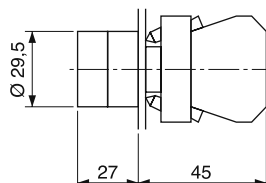
60mm E-stop Twist Release

TYPE NO.	COLOUR
CCTTM60LB	Black
CCTTM60LR	Red



Selector Switch

- Black short lever, 2 and 3 position selector switch
- Maintain & spring return options

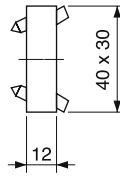


TYPE NO.	POSITIONS	STYLE
CCTTSS211	2	Maintained left & right
CCTTSS210	2	Return left
CCTTSS311	3	Maintained left, centre & right
CCTTSS300	3	Return to centre from left & right
CCTTSS301	3	Return to centre from left, maintained right
CCTTSS310	3	Return to centre from right, maintained left

CONTROL PRODUCTS

Mounting Plate

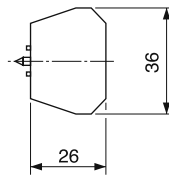
- Metal mounting plate for contact blocks
- Holds 1 or 2 NO or NC contact blocks



TYPE NO.	DESCRIPTION
CCTTP	Mounting plate

Contact Block

- NO and NC contact blocks
- Screw fixed to mounting plate
- Stackable for 3 or more contact blocks per mounting plate



TYPE NO.	DESCRIPTION
CCTTC1R	Red NC
CCTTC0G	Green NO

Dust Cap

- Clear Silicon protection cap for push buttons
- Other colours to order



TYPE NO.	DESCRIPTION
CCTTRDCL	Clear dust cap

Keys for E-Stop Key Release

TYPE NO.	SLEEVE
CCTTKRD	Red
CCTTKBK	Black



Button Surrounds

- Yellow engraved black emergency stop
- Black name plate with recessed label area

TYPE NO.	DESCRIPTION
CCTTBES	60mm diameter e-stop
CCTTBNP	Name plate blank



PCB
TERMINAL
BLOCKS

INTER-
CONNECTION

FUSES &
FUSE-
HOLDERS

LEDs &
INDICATORS

MINIATURE
SWITCHES

LIMIT &
SAFETY
SWITCHES

CONTROL
PRODUCTS

INTERFACE
MODULES &
SUPPORTS

RELAY
BASES

ENCLOSURES

BATTERIES

TRANS-
FORMERS

CONTROL PRODUCTS

Control Stations

- IP65 ABS enclosures suitable for control switches and equipment
- Grey and Yellow lid colour options
- Standard boxes and holes moulded in for 22mm diameter control switches
- Diameter 21mm (PG13.5) knockouts moulded in enclosure
- Pre assembled control station and control switching available to order
- Larger size to order

SPECIFICATION

Material	ABS	
Protection class	IP65	
Rated temperature	Operating	-25° to +70°
	Storage	-40° to +80°
Standard colours	Box & lid	Grey RAL 7035
	lid	Yellow RAL 1103

Standard Boxes

TYPE NO.	LID COLOUR	LEGNTH	WIDTH	HEIGHT
CCS00GY00	Grey	70mm	70mm	51mm
CCS03GY00	Grey	70mm	70mm	74mm
CCS05GY00	Grey	105mm	70mm	51mm
CCS06GY00	Grey	105mm	70mm	74mm
CCS07GY00	Grey	140mm	70mm	51mm
CCS08GY00	Grey	140mm	70mm	74mm
CCS09GY00	Grey	185mm	70mm	51mm
CCS10GY00	Grey	185mm	70mm	74mm



Single Button

TYPE NO.	LID COLOUR	LEGNTH	WIDTH	HEIGHT
CCS00GY01	Grey	70mm	70mm	51mm
CCS00YW01	Yellow	70mm	70mm	51mm
CCS03GY01	Grey	70mm	70mm	74mm
CCS03YW01	Yellow	70mm	70mm	74mm



Two Button

TYPE NO.	LID COLOUR	LEGNTH	WIDTH	HEIGHT
CCS05GY02	Grey	105mm	70mm	51mm
CCS05YW02	Yellow	105mm	70mm	51mm
CCS06GY02	Grey	105mm	70mm	74mm
CCS06YW02	Yellow	105mm	70mm	74mm



Three Button

TYPE NO.	LID COLOUR	LEGNTH	WIDTH	HEIGHT
CCS07GY03	Grey	140mm	70mm	51mm
CCS07YW03	Yellow	140mm	70mm	51mm
CCS08GY03	Grey	140mm	70mm	74mm
CCS08YW03	Yellow	140mm	70mm	74mm



Four Button

TYPE NO.	LID COLOUR	LEGNTH	WIDTH	HEIGHT
CCS09GY04	Grey	185mm	70mm	51mm
CCS09YW04	Yellow	185mm	70mm	51mm
CCS10GY04	Grey	185mm	70mm	74mm
CCS10YW04	Yellow	185mm	70mm	74mm



Five & Six Button

TYPE NO.	BUTTONS	LID COLOUR	LEGNTH	WIDTH	HEIGHT
CCS11GY05	5	Grey	225mm	70mm	74mm
CCS11GY06	6	Grey	225mm	70mm	74mm



CONTROL PRODUCTS

IP66 Control Station Enclosures

ABS enclosures pre-drilled with 22mm holes for the mounting of pushbutton switches

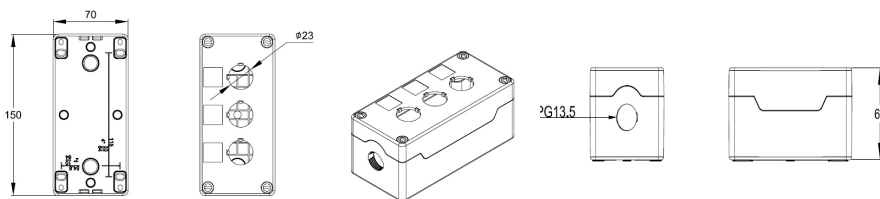
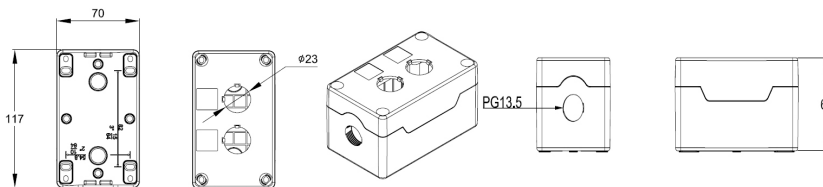
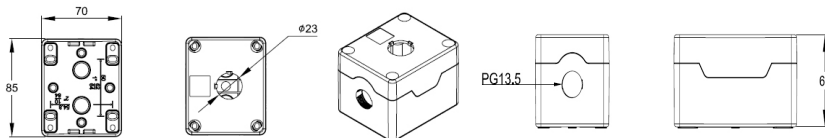
- IP66 sealed
- 21mm diameter knockouts with PG13.5 thread for cable glands
- Black base with yellow lid
- Wall mountable via secure screws in base/cable tie clamp
- Captive plastic screws

SPECIFICATIONS

Materials	ABS UL94-V0
Protection Class	IP66
Rated Temperature	from -25°C to +70°C
Standard Colours	Lid- Yellow (RAL 1023) Black (RAL 9017)

Empty Enclosures

TYPE NO	HOLES	LID COLOUR	LENGTH	WIDTH	HEIGHT
SC1A	1	Yellow	85	70	65
SC2A	2	Yellow	117	70	65
SC3A	3	Yellow	150	70	65



PCB
TERMINAL
BLOCKS

INTER-
CONNECTION

FUSES &
FUSE-
HOLDERS

LEDs &
INDICATORS

MINIATURE
SWITCHES

LIMIT &
SAFETY
SWITCHES

CONTROL
PRODUCTS

INTERFACE
MODULES &
SUPPORTS

RELAY
BASES

ENCLOSURES

BATTERIES

TRANS-
FORMERS

CONTROL PRODUCTS

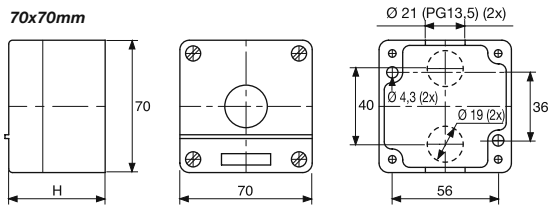
Mounting Plates

TYPE NO.	BUTTONS
CCSP01	1
CCSP02	2
CCSP03	3
CCSP04	4
CCSP05	5

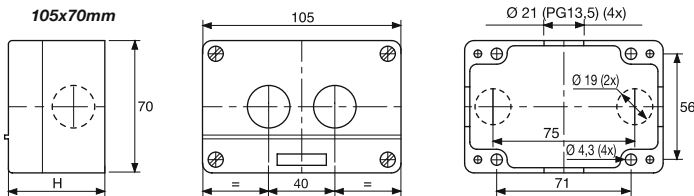
for 6 button use 2x CCSP03



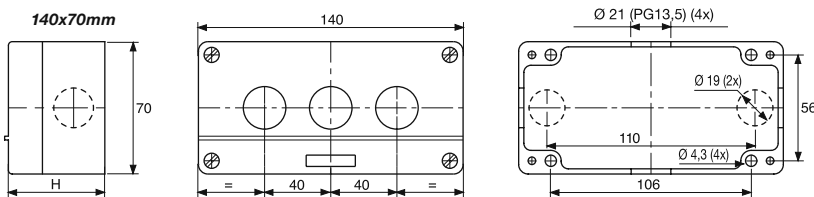
70x70mm



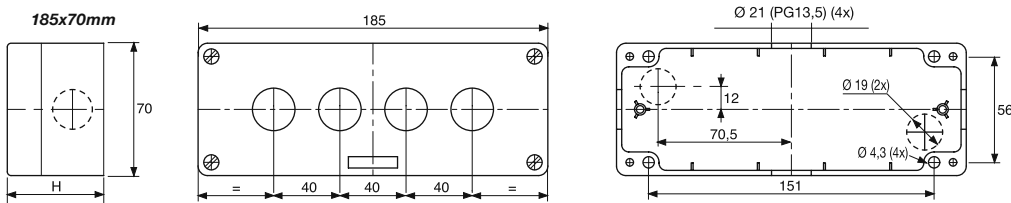
105x70mm



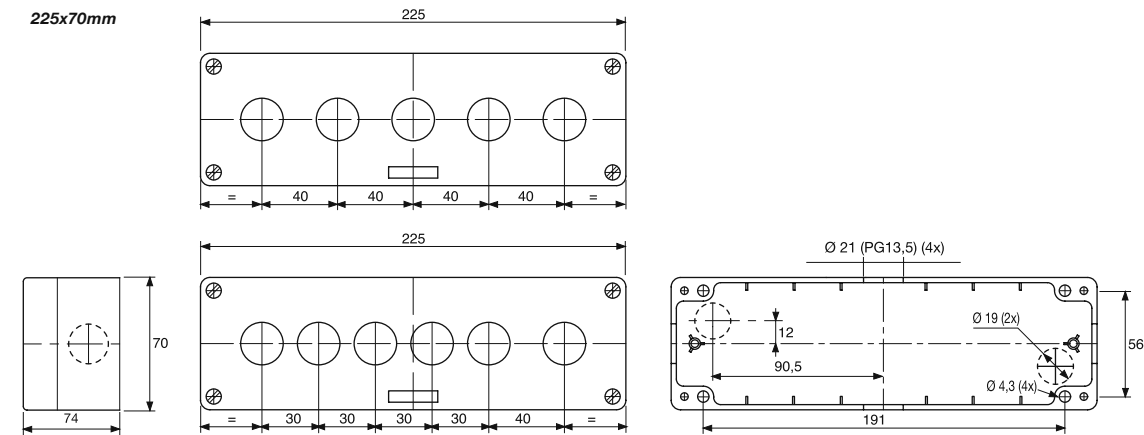
140x70mm



185x70mm



225x70mm



PCB
TERMINAL
BLOCKS

INTER-
CONNECTION

FUSES &
FUSE-
HOLDERS

LEDs &
INDICATORS

MINIATURE
SWITCHES

LIMIT &
SAFETY
SWITCHES

CONTROL
PRODUCTS

INTERFACE
MODULES &
SUPPORTS

RELAY
BASES

ENCLOSURES

BATTERIES

TRANS-
FORMERS

CONTROL PRODUCTS

Heavy Duty Footswitch

- Industrial die-cast footswitch
- Heavy duty IP65 applications
- Snap action and slow action contact blocks
1 NO + 1 NC
- Rising saddle-washer terminal connections
- Single or double double-pole contact blocks
- Positive opening operation
- Silver contacts
- Anti Slip foot pedal
- Non-slip rubber feet
- Supplied with IP65 cable gland
- CE approved



PART NO.	DESCRIPTION
CFSHC1	Guarded 1 snap action contact block
CFSHC2	Guarded 1 slow action contact block
CFSHC1C1	Guarded 2 snap action contact blocks
CFSHC2C2	Guarded 2 slow action contact blocks
CFSHC1C2	Guarded 1 snap and 1 slow action contact blocks

SPECIFICATIONS

Contact Block Rated	10A		
Insulation voltage (U _i)	500VAC 600VDC		
Protection against short circuits	fuse 10A 500V type aM		
Alternate current: AC15 (50-60Hz)			
U _i (V)	250	400	500
I _e (A)	6	4	1
Direct current: DC13			
U _e (V)	24	125	250
I _e (A)	6	1.1	0.4
Connectors flexible wire sizes	min	1 x 0.5 mm ² (1 x AWG 20)	
	max	2 x 2.5mm ² (2 x AWG 14)	
Actuating force	single snap action	10N	
	single slow action	12N	
	double snap action	13N	
	double slow action	15N	
Ambient temperature	from -25°C to +80°C		
Weight guarded	1.4 kg		

